

# Hospital Authority - At a Glance

<b>Mission</b>	To improve the health and wellness of our Nashville community by providing equitable access to comprehensive, coordinated, patient-centered care.		
<b>Vision</b>	To be the leader in exceptional community healthcare – One neighbor at a time.		
<b>Budget Summary</b>			
	<u>2023-24</u>	<u>2024-25</u>	<u>2025-26</u>
<b>Expenditures and Transfers:</b>			
GSD General Fund - Metro Subsidy	\$57,820,700	\$59,555,300	\$60,746,400
<b>Total Expenditures and Transfers</b>	<u>\$57,820,700</u>	<u>\$59,555,300</u>	<u>\$60,746,400</u>
<b>Expenditures per Capita</b>	\$73.45	\$81.64	\$82.25
<b>Position</b>	Total Budgeted Positions	508	508
	* Prior to any service reduction or eliminations, if required		
<b>Contacts</b>	Board Chair: Dr. Raymond Martin	email: buzmar10@gmail.com	
	Interim Chief Executive Officer: Dr. Veronica Elders	email: veronica.elders@nashvilleha.org	
	Interim Chief Financial Officer: Dr. Kemberly Blackledge	email: kemberly.blackledge@nashvilleha.org	
	1818 Albion Street    37208	Phone: 615-341-4491	

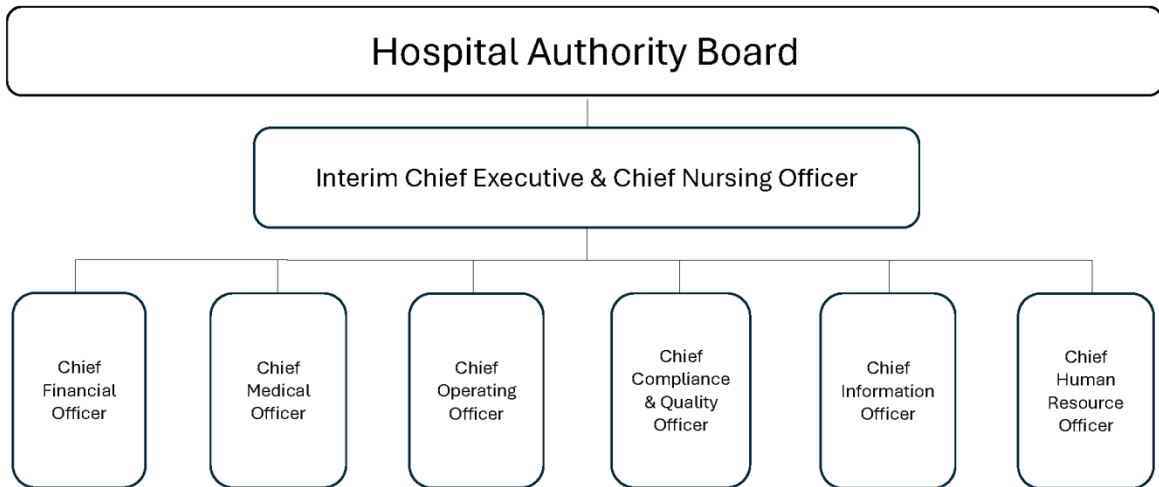
Since its inception as City Hospital in 1890, Nashville General Hospital (NGH) has been a stalwart advocate for the citizens of Nashville and Davidson County. Initially opened to serve desperately ill patients or those who could not care for themselves, NGH has grown into a multi-service, technologically-advanced facility that provides emergency services and acute care as well as ancillary and ambulatory services.

In 1998, the hospital was relocated to the campus of Meharry Medical College. Today, NGH is Joint Commission accredited and is the principal teaching hospital for Meharry clinical training. Meharry's students encounter a broad range of medical-surgical experiences and are involved in community outreach and screening programs designed to foster early detection, improved health, and better understanding of general health related issues among the most underserved residents of Metropolitan Nashville and Davidson County.

With annual emergency room visits exceeding 30,000, and inpatient admissions greater than 2,400, NGH is an engaged and trusted community partner dedicated to better health and wellness for all segments of the community.

# Hospital Authority - At a Glance

## Organizational Structure



## Clinical Programs and Services

### **MEDICAL**

Cardiology  
Endocrinology  
Gastroenterology  
Hematology/Oncology  
Infectious Diseases  
Internal Medicine  
Neurology  
Nephrology  
Pathology  
Pulmonology  
Rheumatology  
Women's Services  
Radiology

### **SURGICAL**

Anesthesiology  
Ear, Nose & Throat (ENT)  
General Surgery  
Ophthalmology  
Orthopedics  
Podiatry  
Urology  
Vascular Surgery

### **AMBULATORY SERVICES**

Outpatient Infusion Center  
Same Day Surgery  
Nashville Healthcare Center at NGH, Midtown, MetroCenter, & Bordeaux  
Nashville Healthcare Diagnostic Center – Bordeaux  
Our Kids Center

#### Graduate Medical Education Programs

Medicine  
Family Practice  
OB/Gyn

#### Health Sciences Education

Radiologic Technology  
Cardiographic Technician (EKG) Certification  
Medical Imaging Preceptorship in CT, MRI, & Mammography  
Phlebotomy Technician  
Certified Nursing Assistant Program (CNA)