

ESTIMATED QUANTITIES

SPEED CUSHIONS




6' X 10.5' SPEED CUSHION WITH ONE ARROW	14
6' X 10.5' SPEED CUSHION WITH DSYL	1

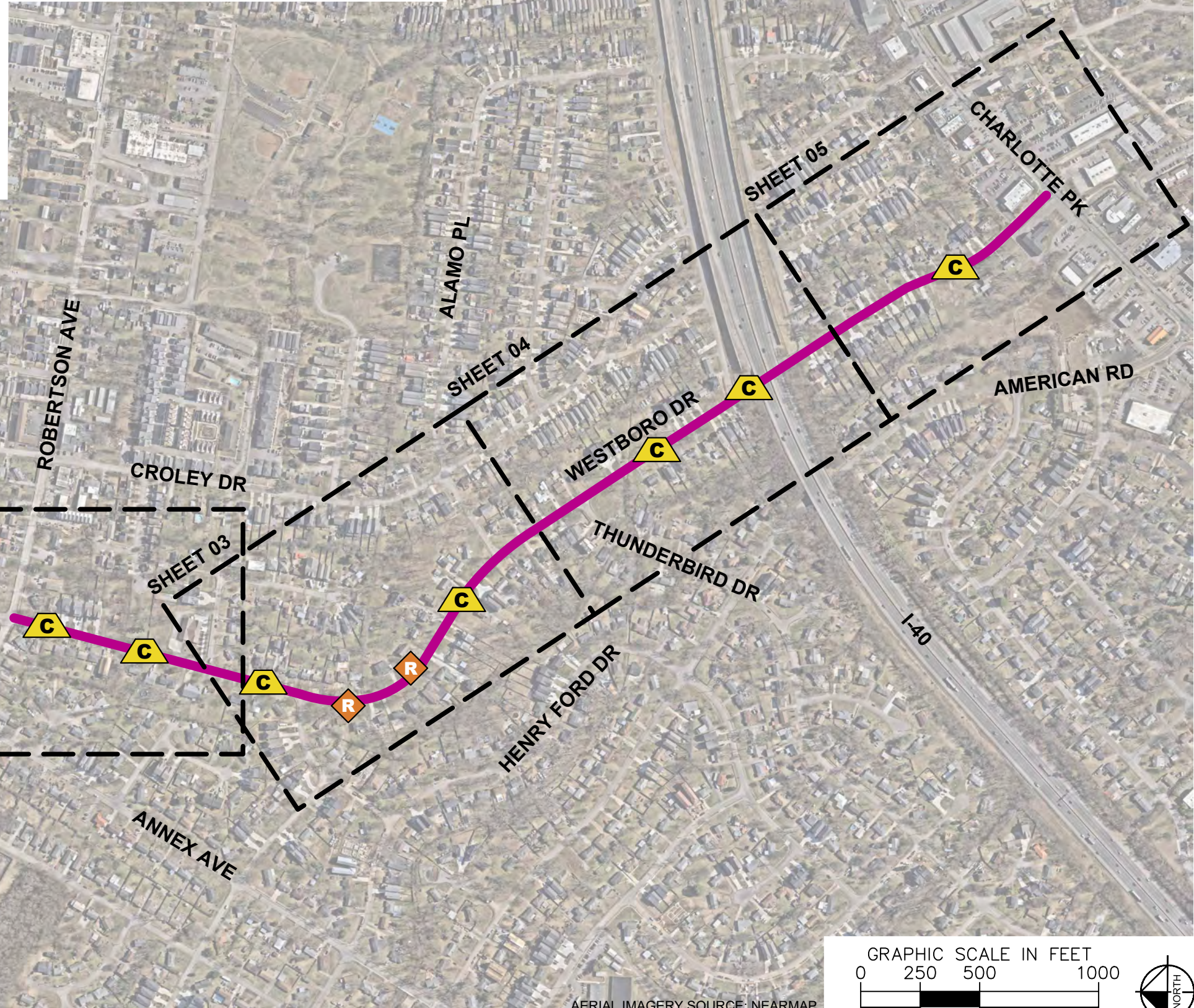
SIGNING

W17-1 (VAR.) "SPEED CUSHION" SIGN (30" X 30")	8
W17-1 (VAR.) "SPEED CUSHIONS AHEAD" SIGN (30" X 30")	2
W13-1P "20 M.P.H" SIGN (18" X 18")	10
RADAR FEEDBACK SIGN	2

NOTE: ALL LOCATIONS ARE REFERENCED FROM CENTERLINE OF DRIVEWAYS OR OTHER LANDMARKS TO THE CENTER OF SPEED CUSHIONS OR SIGNS.

LEGEND

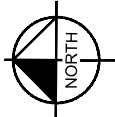
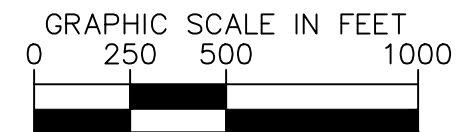
-  LIMITS OF TRAFFIC CALMING PROJECT
-  SPEED CUSHIONS
-  RADAR FEEDBACK SIGN



WESTBORO DRIVE
TRAFFIC CALMING
NASHVILLE, TN



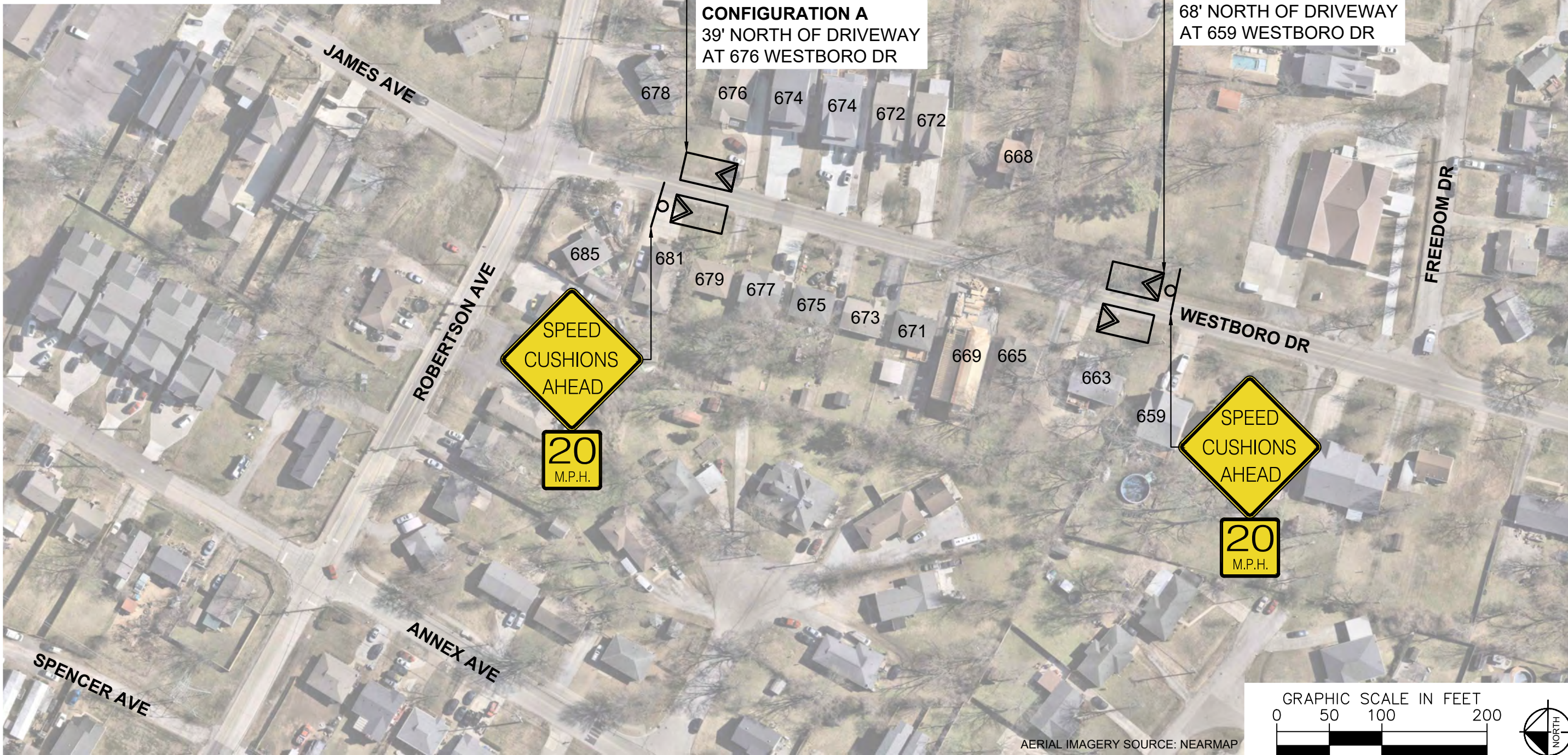
DESIGNED BY:	ALB
DRAWN BY:	KMZ
CHECKED BY:	NDOT
DATE:	9/17/2025
KIMLEY-HORN PROJECT NO.:	118800066



KEY
SHEET NUMBER
01

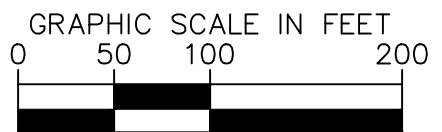
This document, together with the concepts and designs presented herein, is intended only for the specific purpose and client for which it was prepared. Reuse of and improper reliance on this document without written authorization and adaptation by Kimley-Horn and Associates, Inc. shall be without liability to Kimley-Horn and Associates, Inc.

SPEED CUSHIONS



SPEED CUSHION CONFIGURATION A
39' NORTH OF DRIVEWAY
AT 676 WESTBORO DR

SPEED CUSHION CONFIGURATION B
68' NORTH OF DRIVEWAY
AT 659 WESTBORO DR



AERIAL IMAGERY SOURCE: NEARMAP



WESTBORO DRIVE
TRAFFIC CALMING
NASHVILLE, TN



DESIGNED BY:	ALB
DRAWN BY:	KMZ
CHECKED BY:	NDOT
DATE:	9/17/2025
KIMLEY-HORN PROJECT NO. 11880066	

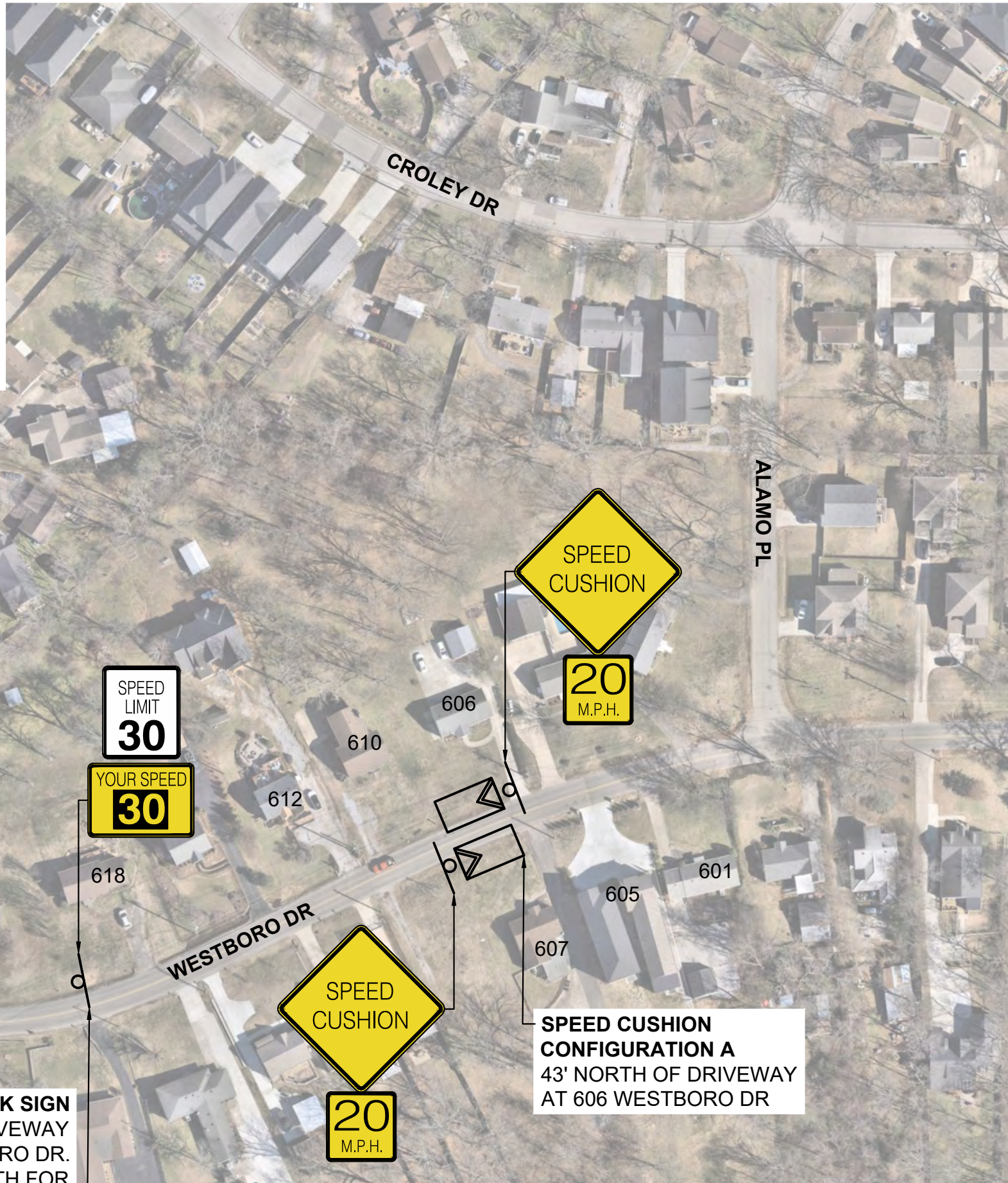
CONCEPT
SHEET NUMBER
02

This document, together with the concepts and designs presented herein, is intended only for the specific purpose and client for which it was prepared. Reuse and improper reliance on this document without written authorization and adaptation by Kimley-Horn and Associates, Inc. shall be without liability to Kimley-Horn and Associates, Inc.

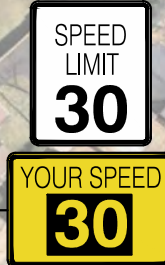
SPEED CUSHIONS



RADAR FEEDBACK SIGN



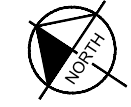
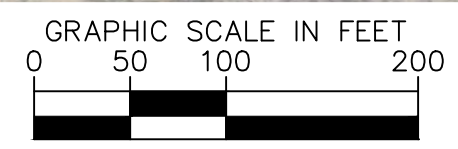
SPEED CUSHION CONFIGURATION C
22' SOUTH OF DRIVEWAY AT 635 WESTBORO DR



SPEED CUSHION CONFIGURATION A
43' NORTH OF DRIVEWAY AT 606 WESTBORO DR

RADAR FEEDBACK SIGN
38' SOUTH OF DRIVEWAY AT 629 WESTBORO DR. (FACING NORTH FOR SOUTHBOUND TRAFFIC)

RADAR FEEDBACK SIGN
92' SOUTH OF DRIVEWAY AT 620 WESTBORO DR. (FACING SOUTH FOR NORTHBOUND TRAFFIC)



AERIAL IMAGERY SOURCE: NEARMAP



WESTBORO DRIVE
TRAFFIC CALMING
NASHVILLE, TN

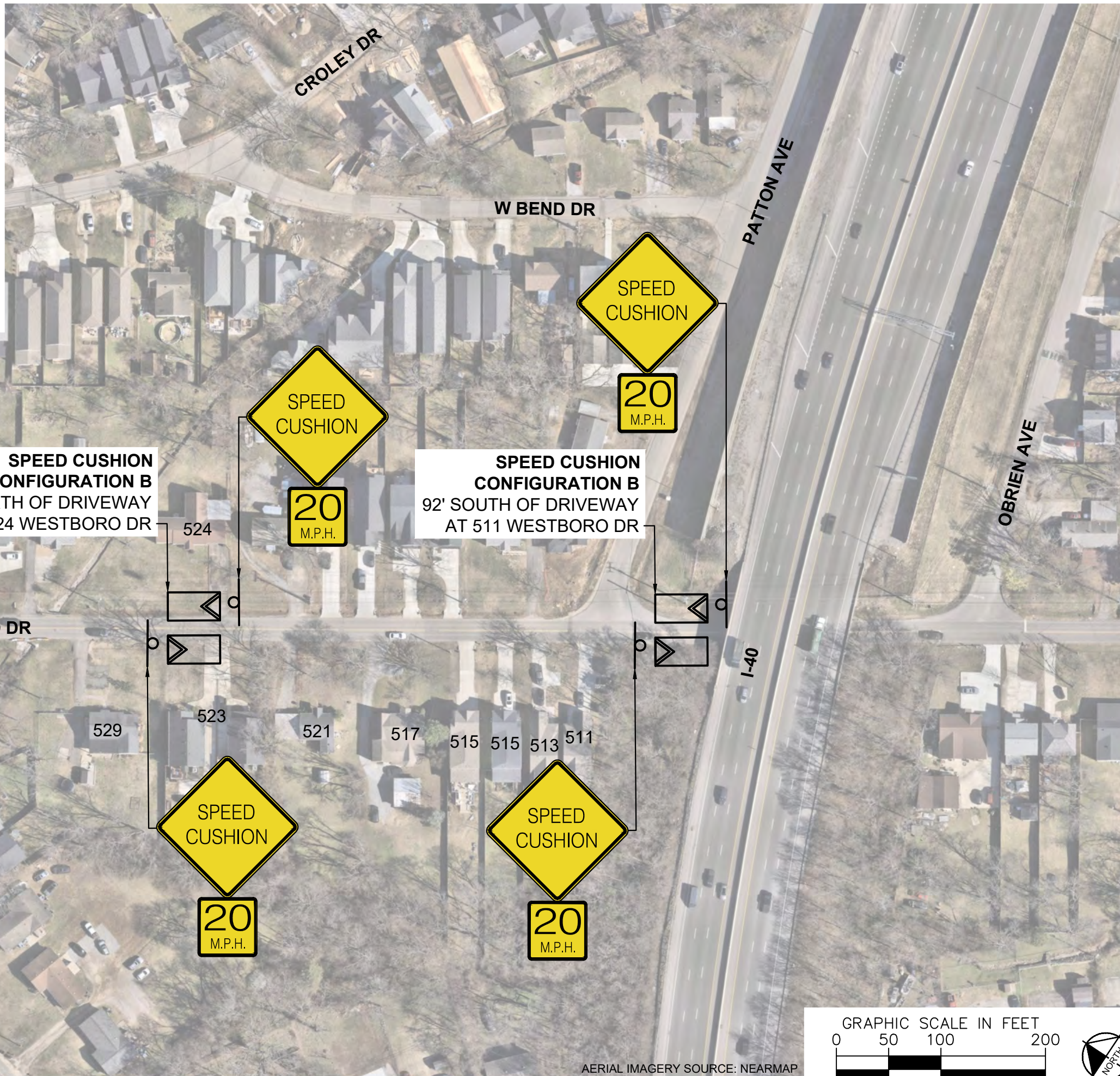


DESIGNED BY:	ALB
DRAWN BY:	KMZ
CHECKED BY:	NDOT
DATE:	9/17/2025
KIMLEY-HORN PROJECT NO.:	118900066

CONCEPT
SHEET NUMBER
03

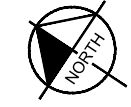
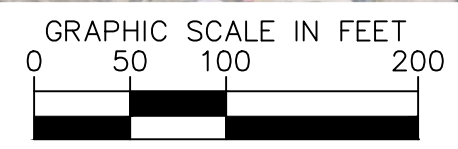
This document, together with the concepts and designs presented herein, is intended only for the specific purpose and client for which it was prepared. Reuse of and improper reliance on this document without written authorization and adaptation by Kimley-Horn and Associates, Inc. shall be without liability to Kimley-Horn and Associates, Inc.

SPEED CUSHIONS



SPEED CUSHION CONFIGURATION B
65' NORTH OF DRIVEWAY
AT 524 WESTBORO DR

SPEED CUSHION CONFIGURATION B
92' SOUTH OF DRIVEWAY
AT 511 WESTBORO DR



AERIAL IMAGERY SOURCE: NEARMAP



WESTBORO DRIVE
TRAFFIC CALMING
NASHVILLE, TN

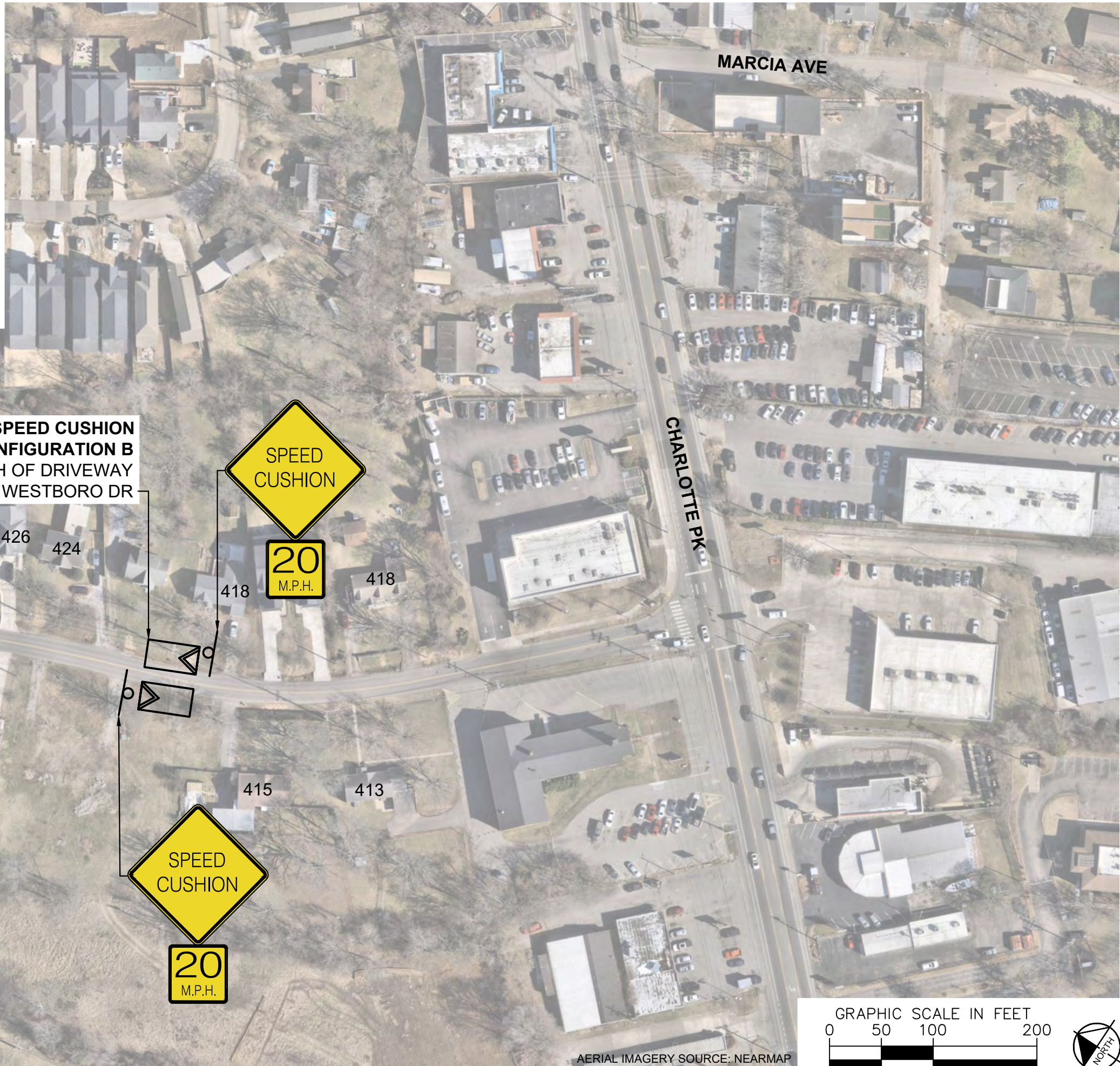


DESIGNED BY: ALB
DRAWN BY: KMZ
CHECKED BY: NDOT
DATE: 9/17/2025
KIMLEY-HORN PROJECT NO. 118800066

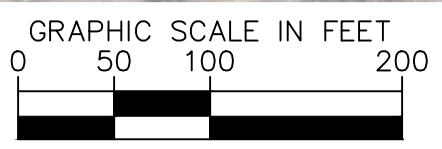
CONCEPT
SHEET NUMBER
04

This document, together with the concepts and designs presented herein, is intended only for the specific purpose and client for which it was prepared. Review and proper reliance on this document without written authorization and adaptation by Kimley-Horn and Associates, Inc. shall be without liability to Kimley-Horn and Associates, Inc.

SPEED CUSHIONS



SPEED CUSHION CONFIGURATION B
59' NORTH OF DRIVEWAY
AT 418 WESTBORO DR



AERIAL IMAGERY SOURCE: NEARMAP



WESTBORO DRIVE
TRAFFIC CALMING
NASHVILLE, TN



DESIGNED BY:	ALB
DRAWN BY:	KMZ
CHECKED BY:	NDOT
DATE:	9/17/2025
KIMLEY-HORN PROJECT NO.:	118800066

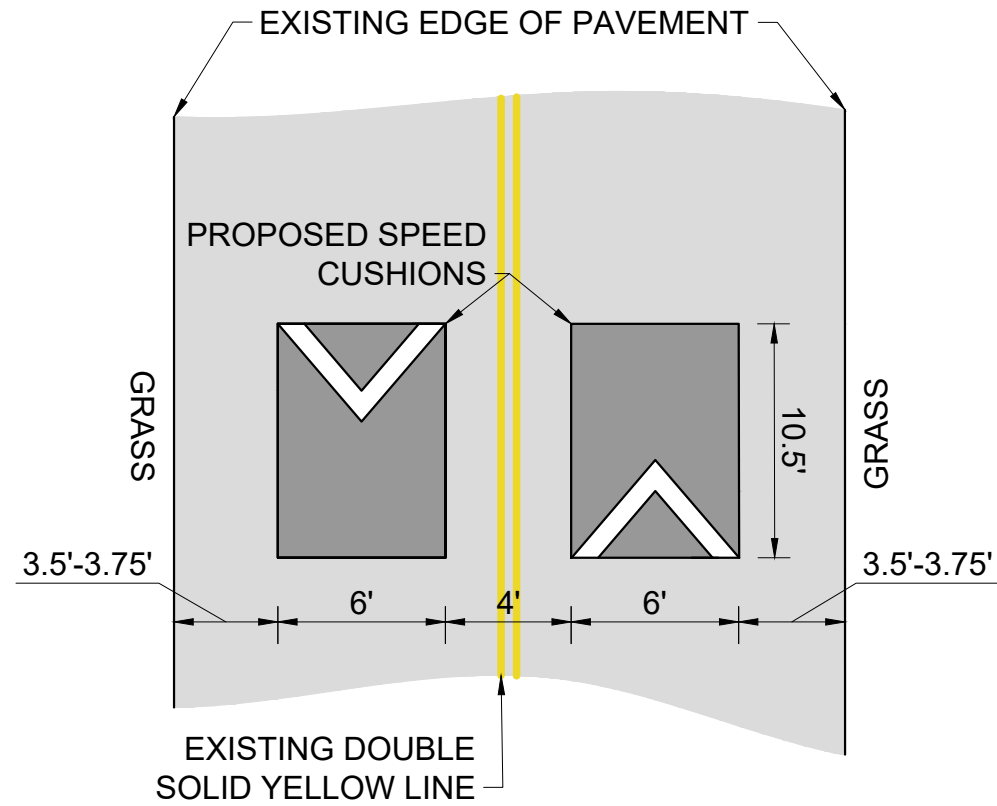
CONCEPT

SHEET NUMBER
05

This document, together with the concepts and designs presented herein, is intended only for the specific purpose and client for which it was prepared. Reuse of and improper reliance on this document without written authorization and adaptation by Kimley-Horn and Associates, Inc. shall be without liability to Kimley-Horn and Associates, Inc.

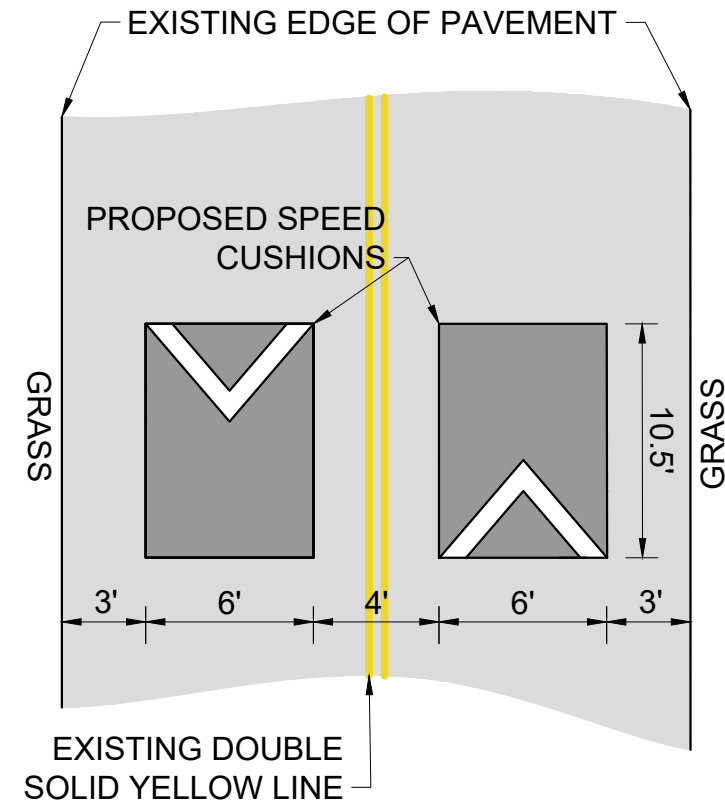
CONFIGURATION A

PAVEMENT WIDTH: 23'-23.5'



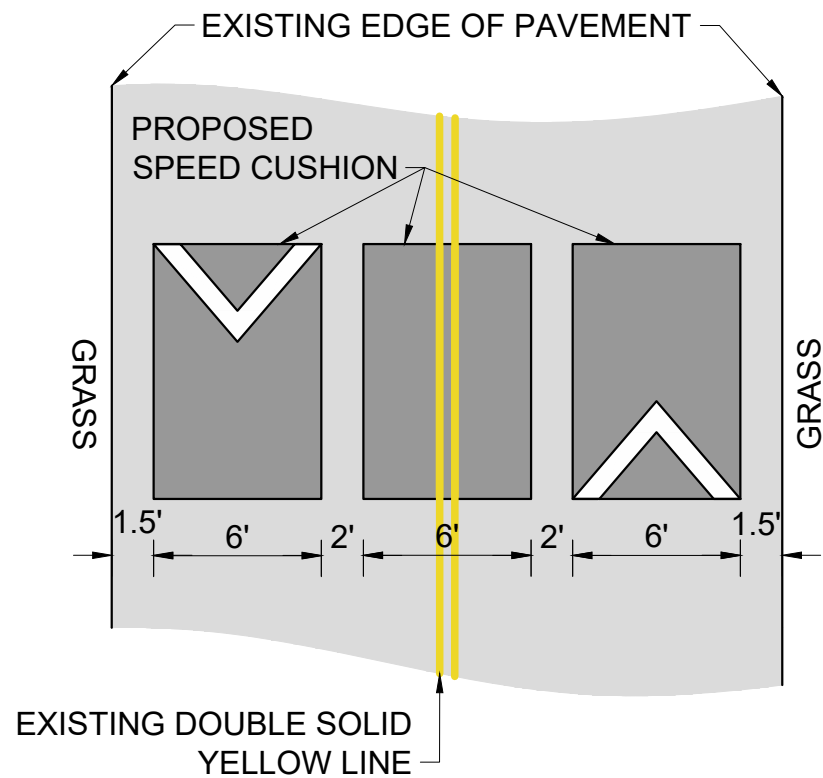
CONFIGURATION B

PAVEMENT WIDTH: 22'

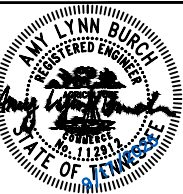


CONFIGURATION C

PAVEMENT WIDTH: 25'



WESTBORO DRIVE
TRAFFIC CALMING
NASHVILLE, TN



DESIGNED BY: ALB
DRAWN BY: KMZ
CHECKED BY: NDOT
DATE: 9/17/2025
KIMLEY-HORN PROJECT NO. 118800066

DETAIL

SHEET NUMBER
06

This document, together with the concepts and designs presented herein, is intended only for the specific purpose and client for which it was prepared. Reuse of and improper reliance on this document without written authorization and adaptation by Kimley-Horn and Associates, Inc. shall be without liability to Kimley-Horn and Associates, Inc.