

ESTIMATED QUANTITIES

SPEED CUSHIONS

6' X 10.5' SPEED CUSHION WITH ONE ARROW	12
---	----

6' X 10.5' SPEED CUSHION WITH DSYL	1
------------------------------------	---

SIGNING

W17-1 (VAR.) "SPEED CUSHION" SIGN (30" X 30")	12
---	----

W13-1P "20 M.P.H" SIGN (18" X 18")	12
------------------------------------	----

PAVEMENT MARKINGS AND DELINEATORS

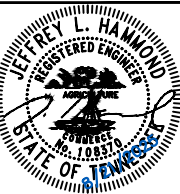
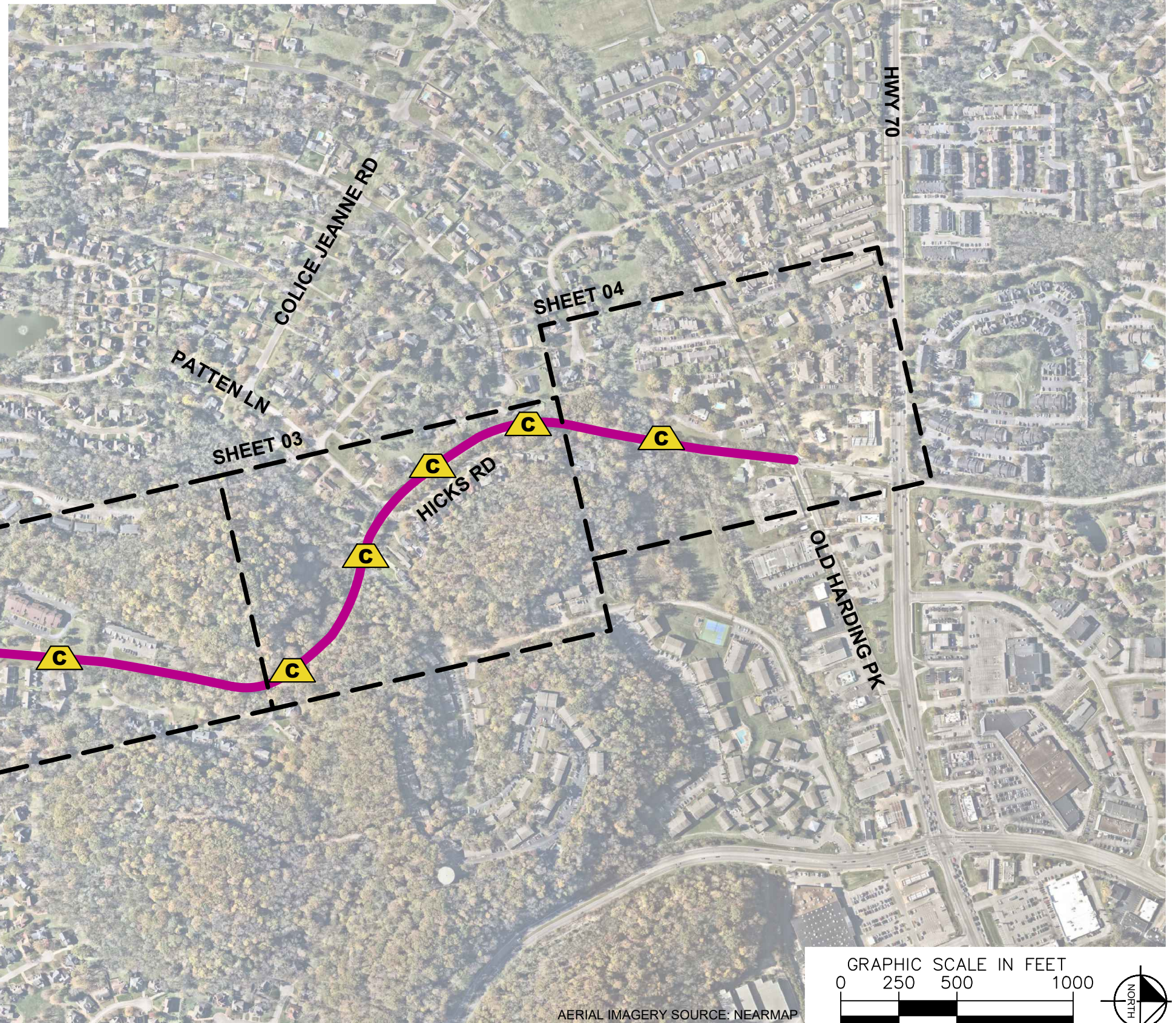
4" WHITE FLEXIBLE DELINEATOR	2
------------------------------	---

NOTE: ALL LOCATIONS ARE REFERENCED FROM CENTERLINE OF DRIVEWAYS OR OTHER LANDMARKS TO THE CENTER OF SPEED CUSHIONS OR SIGNS.

LEGEND

 LIMITS OF TRAFFIC CALMING PROJECT

 SPEED CUSHIONS

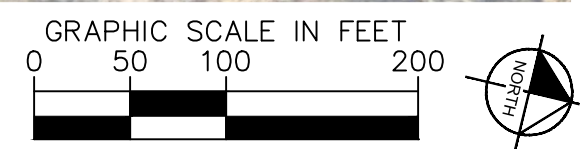
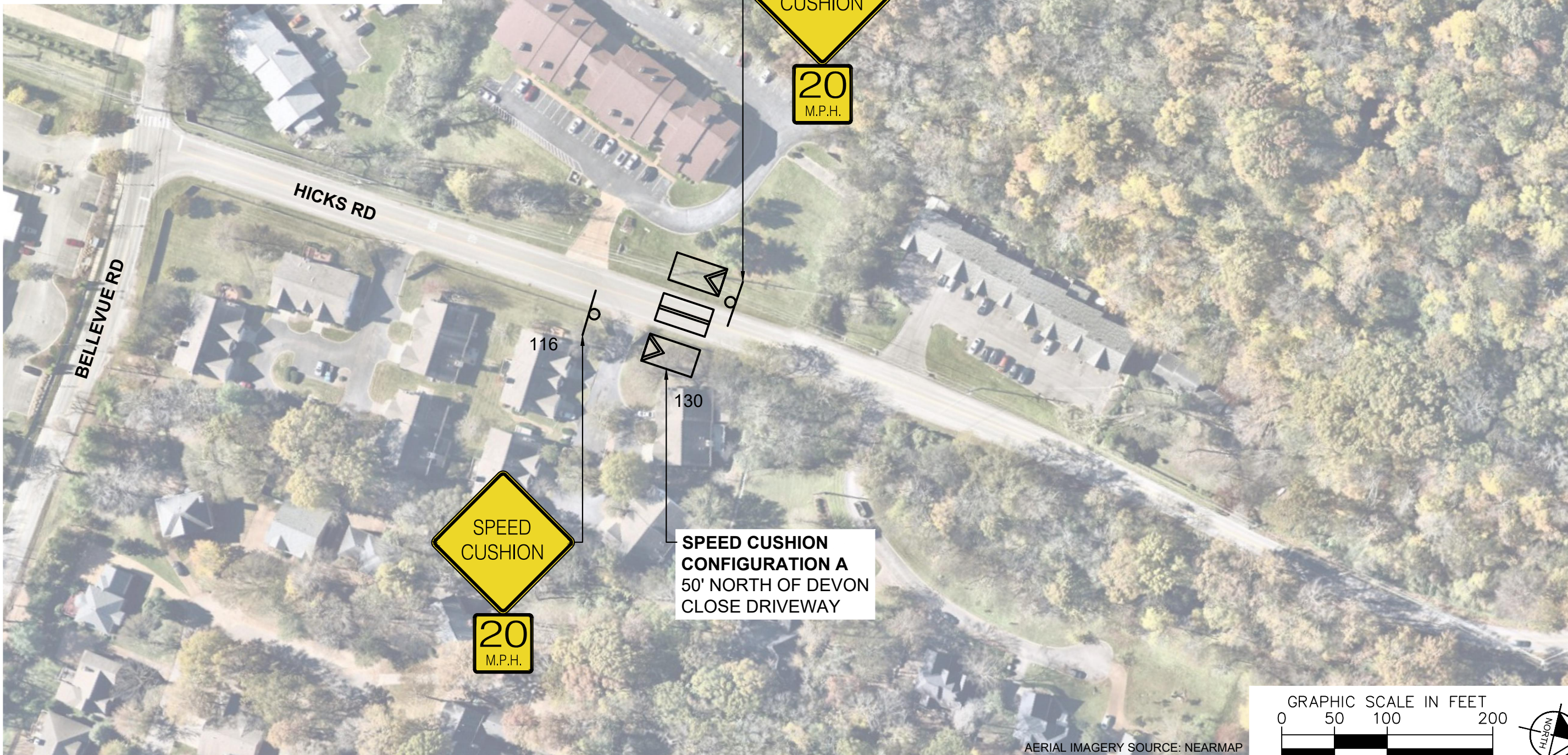


DESIGNED BY: J.L.H.
DRAWN BY: H.X.W.
CHECKED BY: NDOT
DATE: 8/21/2025
KIMLEY-HORN PROJECT NO. 118800066

KEY

SHEET NUMBER
01

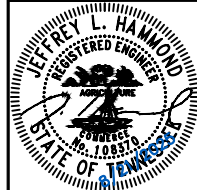
SPEED CUSHIONS



AERIAL IMAGERY SOURCE: NEARMAP



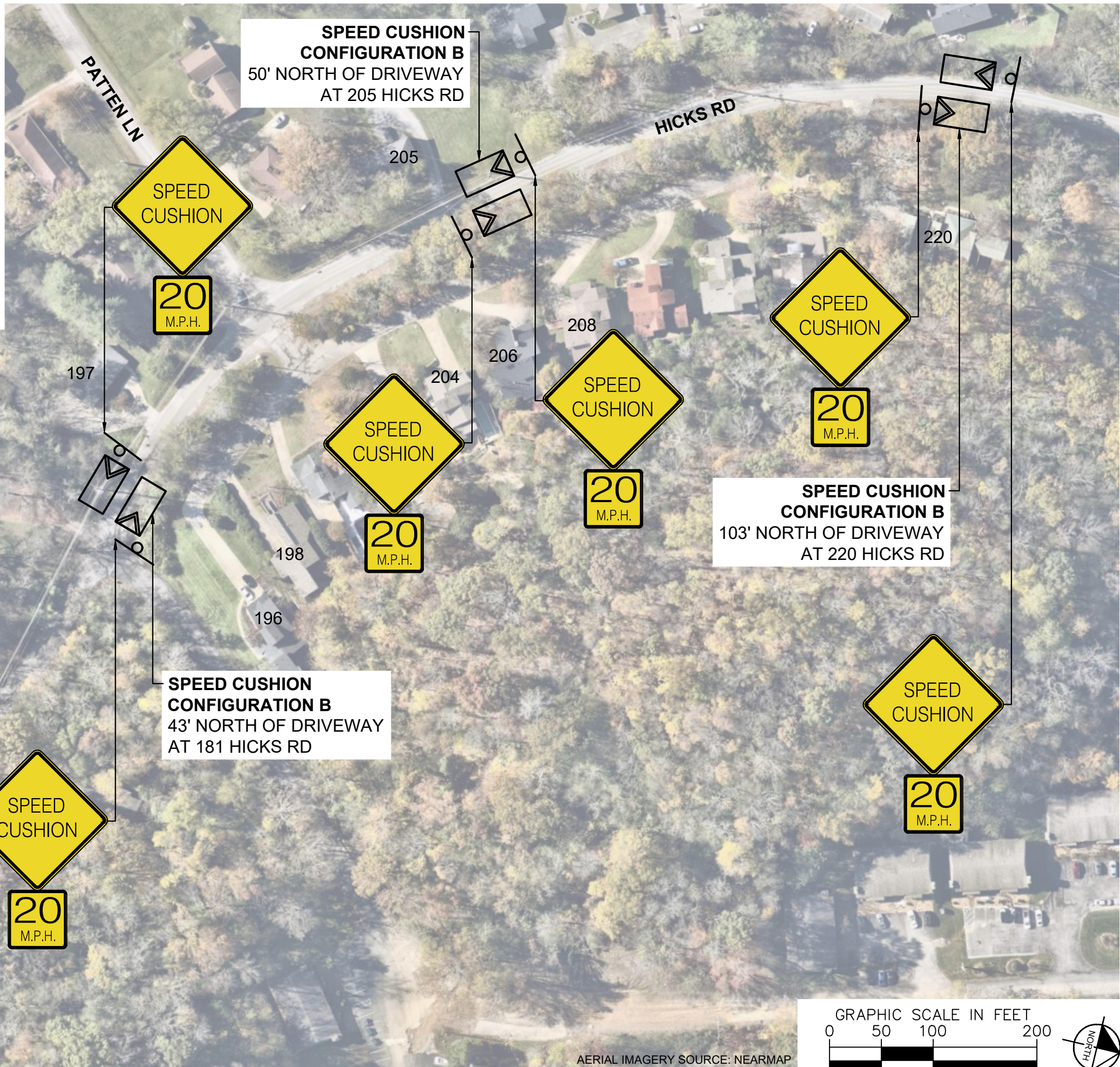
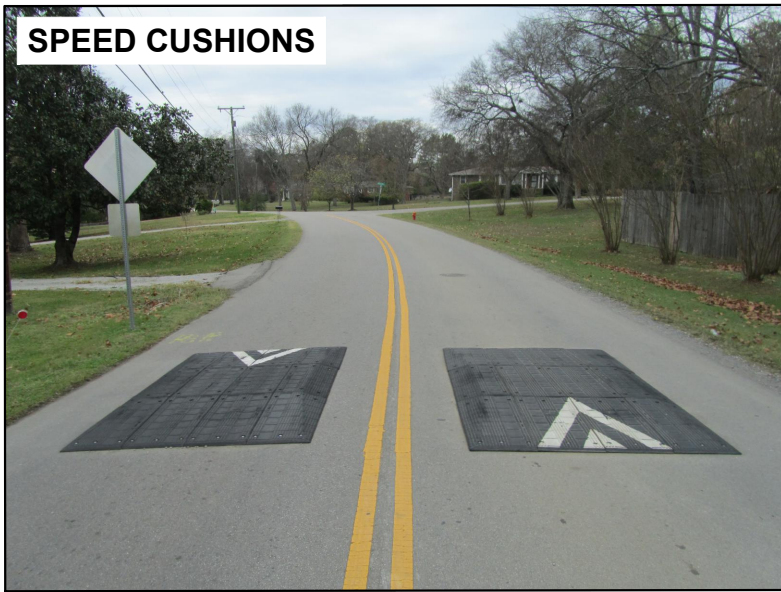
**HICKS ROAD
TRAFFIC CALMING**
NASHVILLE, TN



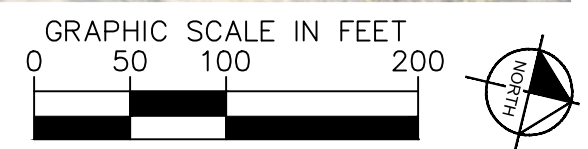
DESIGNED BY:	JLH
DRAWN BY:	HXX
CHECKED BY:	NDOT
DATE:	8/21/2025
KIMLEY-HORN PROJECT NO.:	118800066

CONCEPT
SHEET NUMBER
02

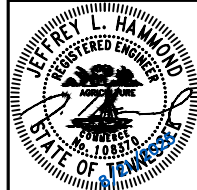
SPEED CUSHIONS



AERIAL IMAGERY SOURCE: NEARMAP



**HICKS ROAD
TRAFFIC CALMING**
NASHVILLE, TN

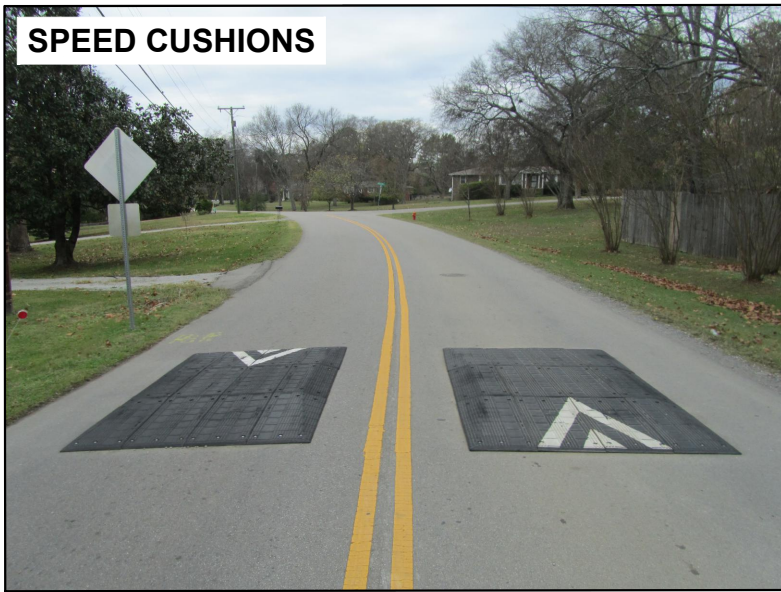


DESIGNED BY:	JLH
DRAWN BY:	HXX
CHECKED BY:	NDOT
DATE:	8/21/2025
KIMLEY-HORN PROJECT NO.:	118800066

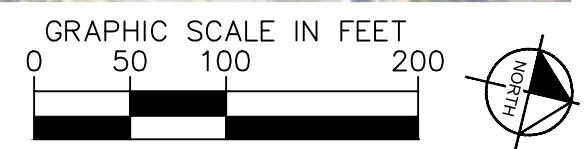
CONCEPT
SHEET NUMBER
03

This document, together with the concepts and designs presented herein, is intended only for the specific purpose and client for which it was prepared. Reuse of and improper reliance on this document without written authorization and adaptation by Kimley-Horn and Associates, Inc. shall be without liability to Kimley-Horn and Associates, Inc.

SPEED CUSHIONS



**SPEED CUSHION
CONFIGURATION B
32' NORTH OF BOX CULVERT**

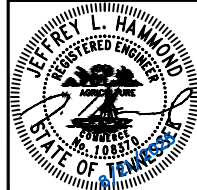


AERIAL IMAGERY SOURCE: NEARMAP

This document, together with the concepts and designs presented herein, is intended only for the specific purpose and client for which it was prepared. Reuse of and improper reliance on this document without written authorization and adaptation by Kimley-Horn and Associates, Inc. shall be without liability to Kimley-Horn and Associates, Inc.



**HICKS ROAD
TRAFFIC CALMING**
NASHVILLE, TN

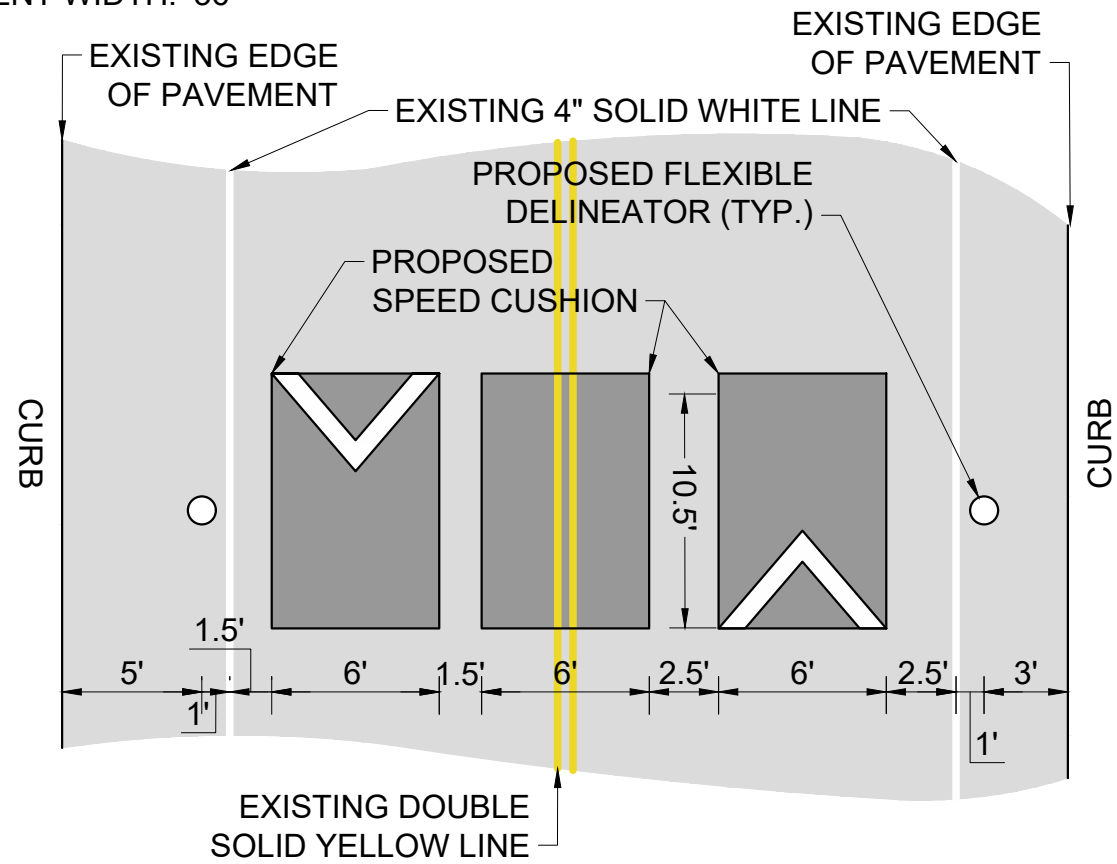


DESIGNED BY:	JLH
DRAWN BY:	HXW
CHECKED BY:	NDOT
DATE:	8/21/2025
KIMLEY-HORN PROJECT NO. 118800066	

CONCEPT
SHEET NUMBER
04

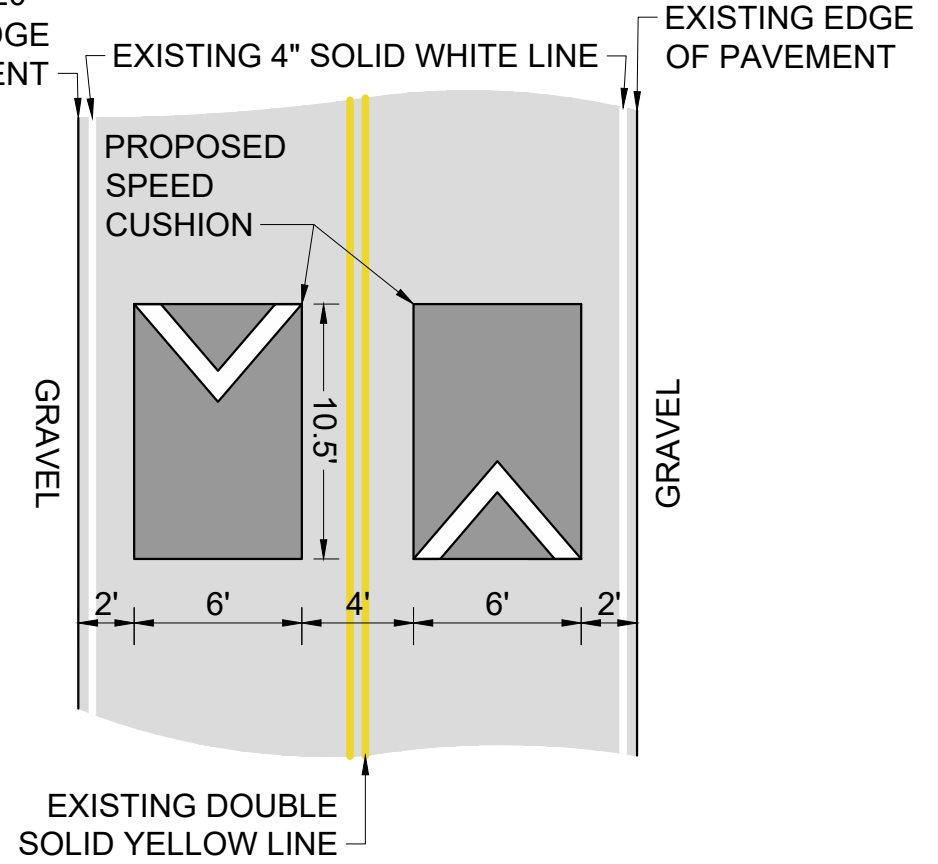
CONFIGURATION A

PAVEMENT WIDTH: 36'



CONFIGURATION B

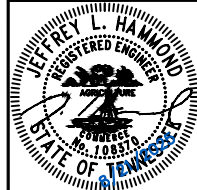
PAVEMENT WIDTH: 20'



This document, together with the concepts and designs presented herein, is intended only for the specific purpose and client for which it was prepared. Reuse of and improper reliance on this document without written authorization and adaptation by Kimley-Horn and Associates, Inc. shall be without liability to Kimley-Horn and Associates, Inc.



HICKS ROAD
TRAFFIC CALMING
NASHVILLE, TN



DESIGNED BY:	JLH
DRAWN BY:	HXX
CHECKED BY:	NDOT
DATE:	8/21/2025
KIMLEY-HORN PROJECT NO. 118800066	

DETAIL

SHEET NUMBER
05