

ESTIMATED QUANTITIES

SPEED CUSHIONS

6' X 10.5' SPEED CUSHION WITH ONE ARROW	16
---	----

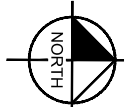
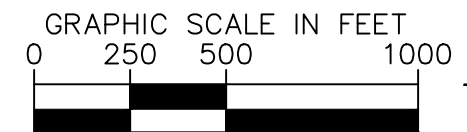
SIGNING

W17-1 (VAR.) "SPEED CUSHION" SIGN (30" X 30")	4
W17-1 (VAR.) "SPEED CUSHIONS AHEAD" SIGN (30" X 30")	2
W13-1P "20 M.P.H" SIGN (18" X 18")	6

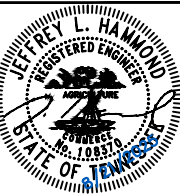
NOTE: ALL LOCATIONS ARE REFERENCED FROM CENTERLINE OF DRIVEWAYS OR OTHER LANDMARKS TO THE CENTER OF SPEED CUSHIONS OR SIGNS.

LEGEND

-  LIMITS OF TRAFFIC CALMING PROJECT
-  SPEED CUSHIONS



AERIAL IMAGERY SOURCE: NEARMAP

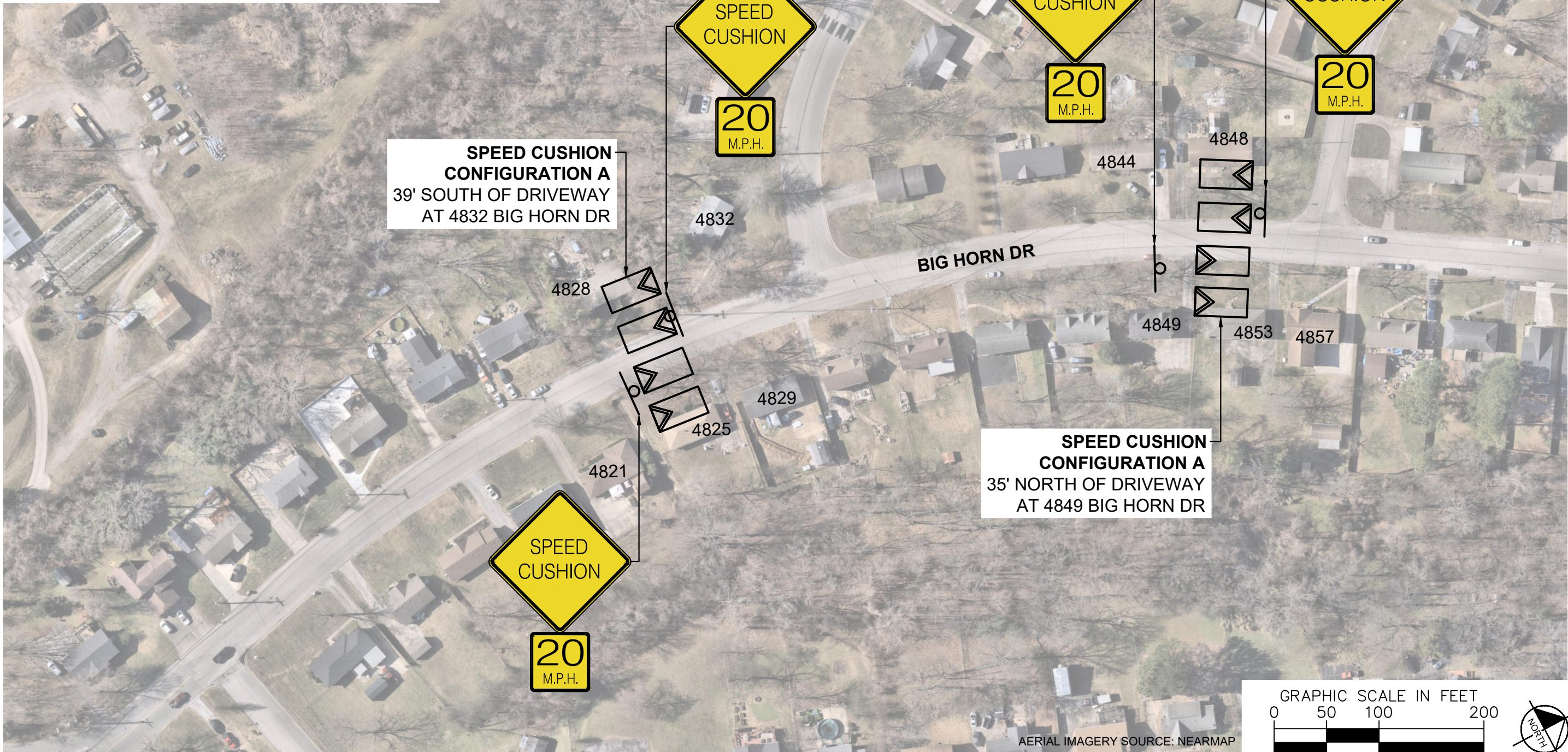


DESIGNED BY:	JLH
DRAWN BY:	HXW
CHECKED BY:	NDOT
DATE:	8/21/2025
KIMLEY-HORN PROJECT NO.	118800066

KEY

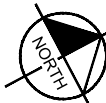
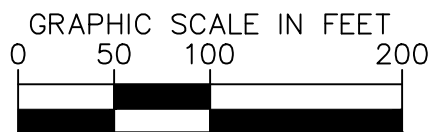
SHEET NUMBER
01

SPEED CUSHIONS



SPEED CUSHION CONFIGURATION A
39' SOUTH OF DRIVEWAY
AT 4832 BIG HORN DR

SPEED CUSHION CONFIGURATION A
35' NORTH OF DRIVEWAY
AT 4849 BIG HORN DR



BIG HORN DRIVE
TRAFFIC CALMING
NASHVILLE, TN



DESIGNED BY:	JLH
DRAWN BY:	HXW
CHECKED BY:	NDOT
DATE:	8/21/2025
KIMLEY-HORN PROJECT NO.:	118800066

CONCEPT
SHEET NUMBER
02

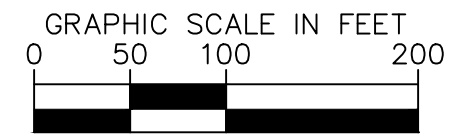
This document, together with the concepts and designs presented herein, is intended only for the specific purpose and client for which it was prepared. Reuse of and improper reliance on this document without written authorization and adaptation by Kimley-Horn and Associates, Inc. shall be without liability to Kimley-Horn and Associates, Inc.

SPEED CUSHIONS



SPEED CUSHION CONFIGURATION A
39' NORTH OF DRIVEWAY
AT 4868 BIG HORN DR

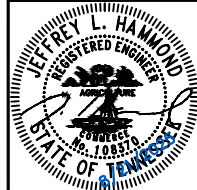
SPEED CUSHION CONFIGURATION A
35' NORTH OF DRIVEWAY
AT 4897 BIG HORN DR



AERIAL IMAGERY SOURCE: NEARMAP



BIG HORN DRIVE
TRAFFIC CALMING
NASHVILLE, TN



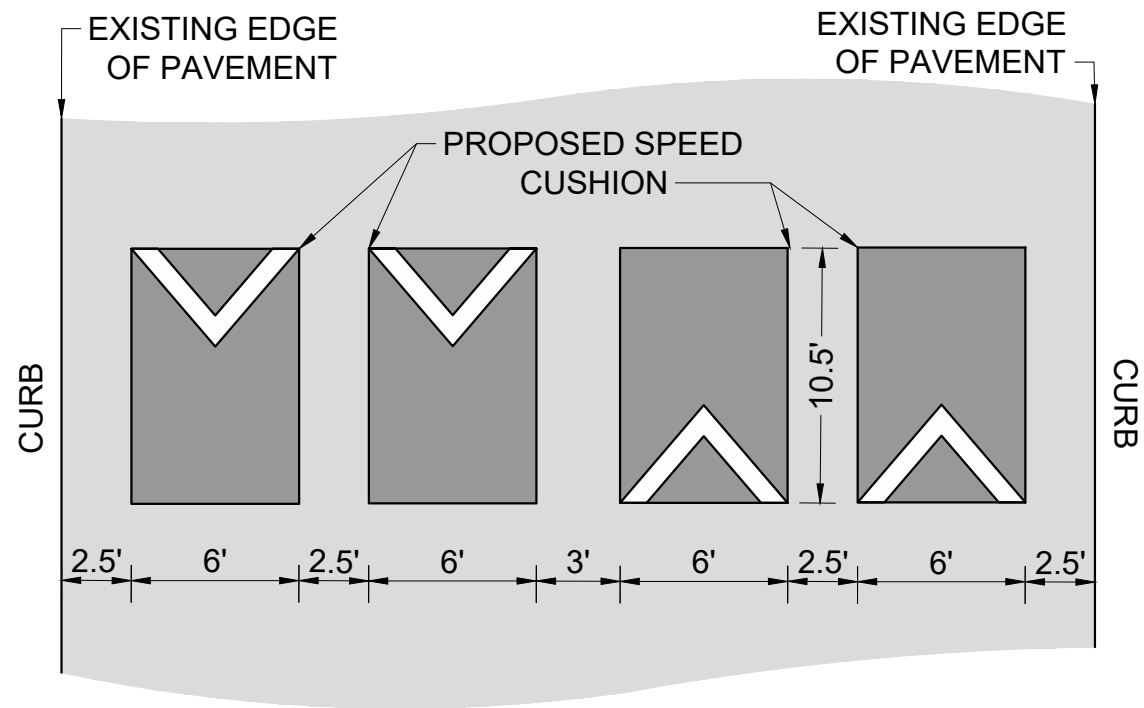
DESIGNED BY:	JLH
DRAWN BY:	HXW
CHECKED BY:	NDOT
DATE:	8/21/2025
KIMLEY-HORN PROJECT NO.:	118800066

CONCEPT
SHEET NUMBER
03

This document, together with the concepts and designs presented herein, is intended only for the specific purpose and client for which it was prepared. Reuse of and improper reliance on this document without written authorization and adaptation by Kimley-Horn and Associates, Inc. shall be without liability to Kimley-Horn and Associates, Inc.

CONFIGURATION A

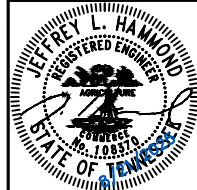
PAVEMENT WIDTH: 37'



This document, together with the concepts and designs presented herein, as an instrument of service, is intended only for the specific purpose and client for which it was prepared. Reuse of and improper reliance on this document without written authorization and adaptation by Kimley-Horn and Associates, Inc. shall be without liability to Kimley-Horn and Associates, Inc.



**BIG HORN DRIVE
TRAFFIC CALMING**
NASHVILLE, TN



DESIGNED BY: J.L.H.
DRAWN BY: H.X.W.
CHECKED BY: NDOT
DATE: 8/21/2025
KIMLEY-HORN PROJECT NO. 118800066

DETAIL

SHEET NUMBER
04