

ESTIMATED QUANTITIES

SPEED CUSHIONS

6' X 10.5' SPEED CUSHION WITH ONE ARROW	8
6' X 7' SPEED CUSHION ONE ARROWS	6

SIGNING

W17-1 (VAR.) "SPEED CUSHION" SIGN (30" X 30")	1
W17-1 (VAR.) "SPEED CUSHIONS AHEAD" SIGN (30" X 30")	6
W13-1P "20 M.P.H" SIGN (18" X 18")	7

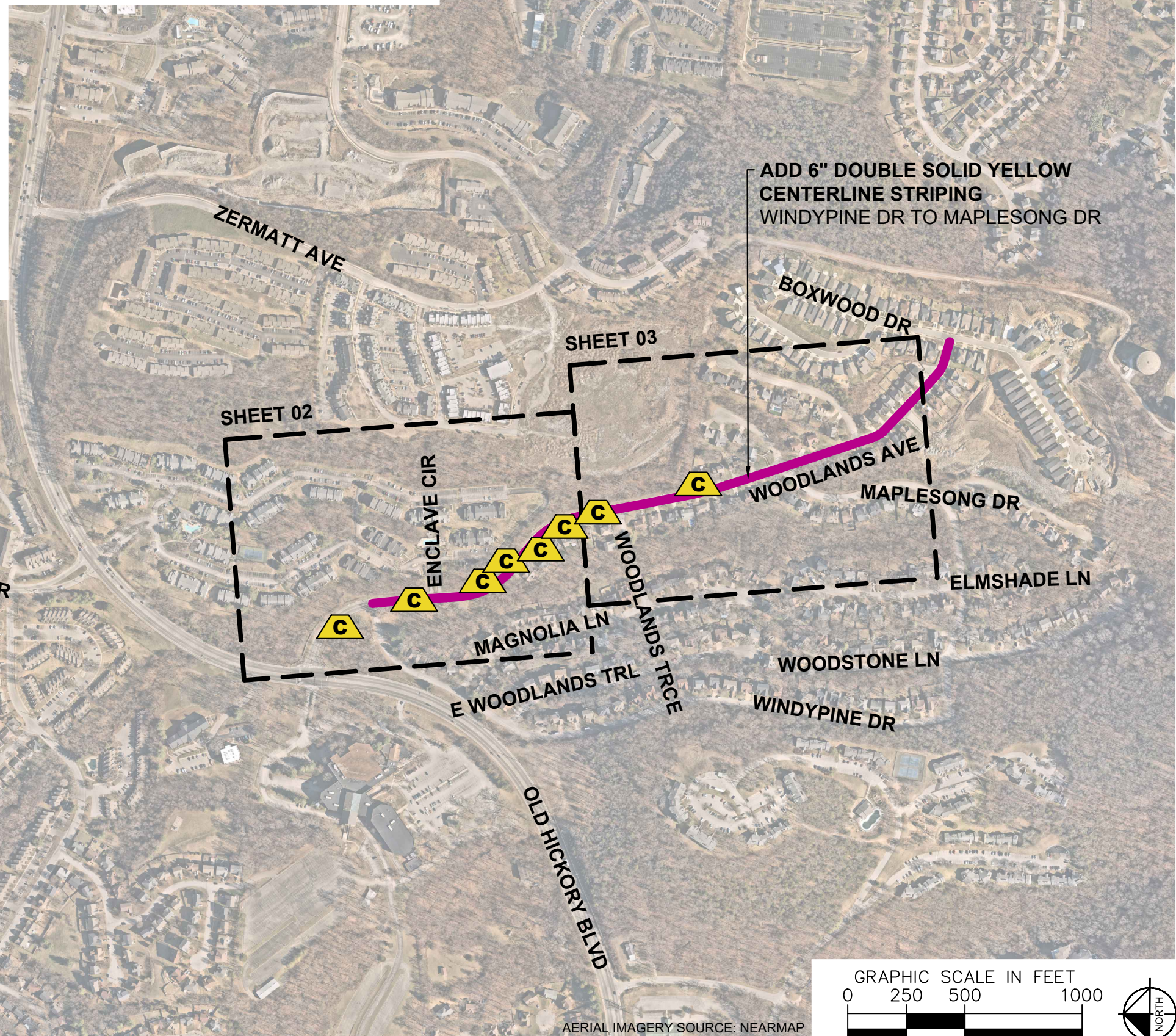
PAVEMENT MARKINGS AND DELINEATORS

6" SINGLE SOLID WHITE LINE (LF)	100
6" DOUBLE SOLID YELLOW LINE (LF)	1,750

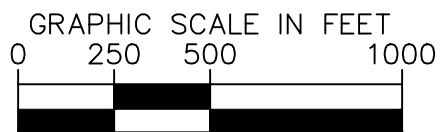
NOTE: ALL LOCATIONS ARE REFERENCED FROM CENTERLINE OF DRIVEWAYS OR OTHER LANDMARKS TO THE CENTER OF SPEED CUSHIONS OR SIGNS.

LEGEND

-  LIMITS OF TRAFFIC CALMING PROJECT
-  SPEED CUSHIONS



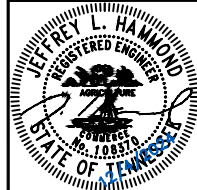
ADD 6" DOUBLE SOLID YELLOW CENTERLINE STRIPING
WINDYPINE DR TO MAPLESONG DR



AERIAL IMAGERY SOURCE: NEARMAP



WOODLANDS AVENUE
TRAFFIC CALMING
NASHVILLE, TN

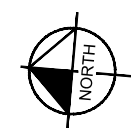
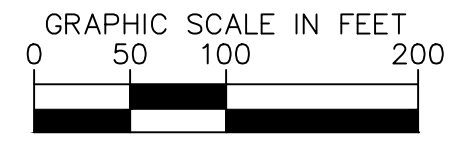
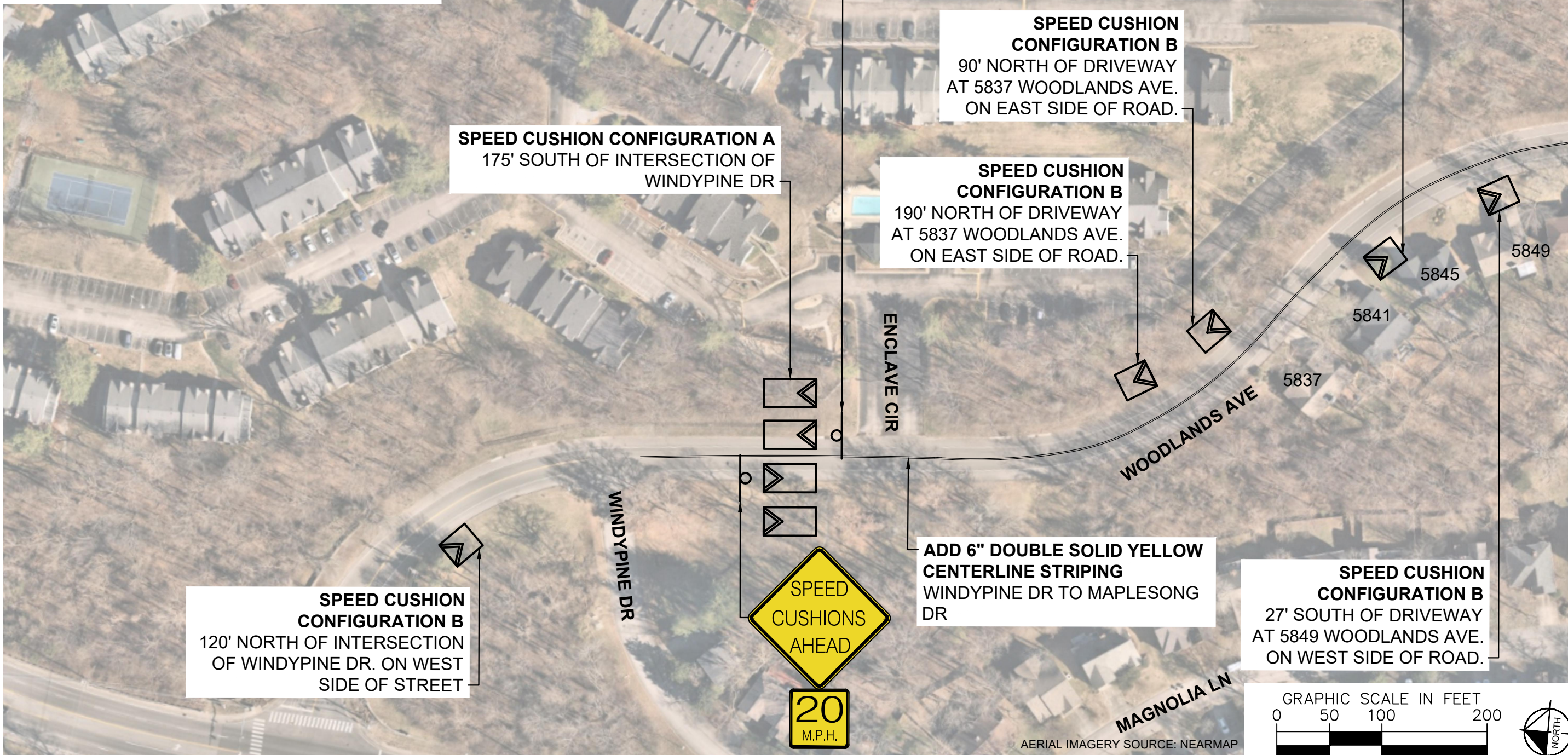


DESIGNED BY:	JLH
DRAWN BY:	ECK
CHECKED BY:	NDOT
DATE:	12/4/2024
KIMLEY-HORN PROJECT NO. 118800251	

KEY
SHEET NUMBER
01

This document, together with the concepts and designs presented herein, is intended only for the specific purpose and client for which it was prepared. Reuse of and improper reliance on this document without written authorization and adaptation by Kimley-Horn and Associates, Inc. shall be without liability to Kimley-Horn and Associates, Inc.

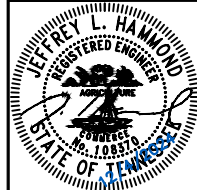
SPEED CUSHIONS



AERIAL IMAGERY SOURCE: NEARMAP



WOODLANDS AVENUE
TRAFFIC CALMING
NASHVILLE, TN



DESIGNED BY:	JLH
DRAWN BY:	ECK
CHECKED BY:	NDOT
DATE:	12/4/2024
KIMLEY-HORN PROJECT NO.:	118800051

CONCEPT
SHEET NUMBER
02

This document, together with the concepts and designs presented herein, is intended only for the specific purpose and client for which it was prepared. Reuse of and improper reliance on this document without written authorization and adaptation by Kimley-Horn and Associates, Inc. shall be without liability to Kimley-Horn and Associates, Inc.



SPEED CUSHION CONFIGURATION B
58' NORTH OF DRIVEWAY
AT 5884 WOODLANDS AVE.
ON WEST SIDE OF STREET.

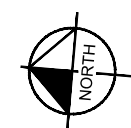
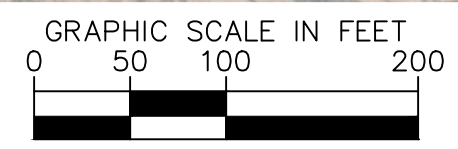


SPEED CUSHION CONFIGURATION A
40' SOUTH OF DRIVEWAY
AT 5853 WOODLANDS AVE

ADD 6" DOUBLE SOLID YELLOW CENTERLINE STRIPING
WINDYPINE DR TO MAPLESONG DR



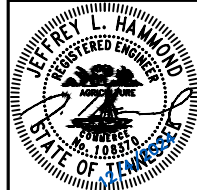
SPEED CUSHIONS



AERIAL IMAGERY SOURCE: NEARMAP



WOODLANDS AVENUE
TRAFFIC CALMING
NASHVILLE, TN

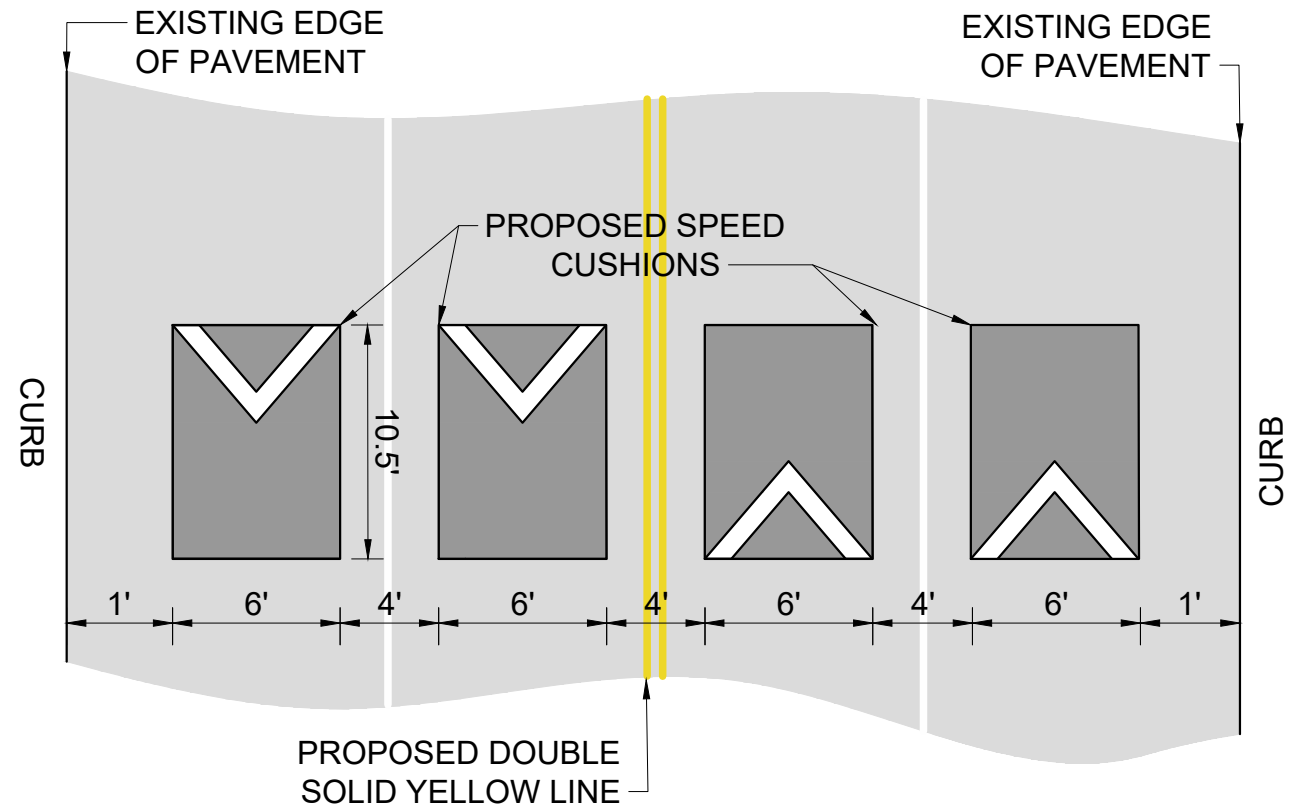


DESIGNED BY: J.L.H.
DRAWN BY: ECK
CHECKED BY: NDOT
DATE: 12/4/2024
KIMLEY-HORN PROJECT NO. 118800051

CONCEPT
SHEET NUMBER
03

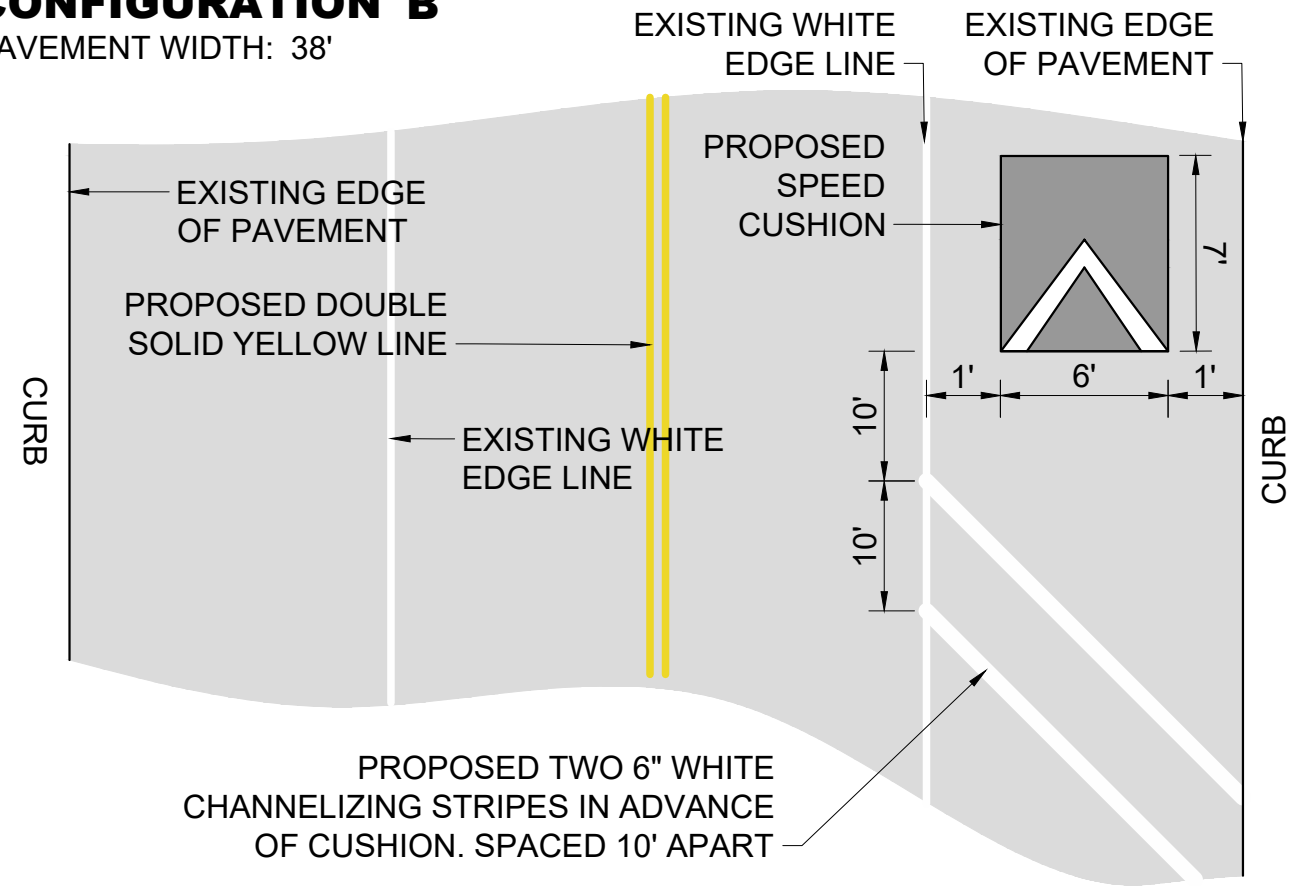
CONFIGURATION A

PAVEMENT WIDTH: 38'



CONFIGURATION B

PAVEMENT WIDTH: 38'



This document, together with the concepts and designs presented herein, is intended only for the specific purpose and client for which it was prepared. Reuse of and improper reliance on this document without written authorization and adaptation by Kimley-Horn and Associates, Inc. shall be without liability to Kimley-Horn and Associates, Inc.



WOODLANDS AVENUE
TRAFFIC CALMING
NASHVILLE, TN



DESIGNED BY: J.L.H.
DRAWN BY: ECK
CHECKED BY: NDOT
DATE: 12/4/2024
KIMLEY-HORN PROJECT NO. 118800051

DETAIL

SHEET NUMBER
04