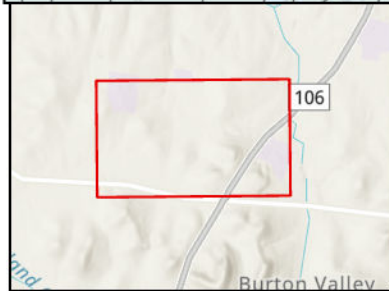
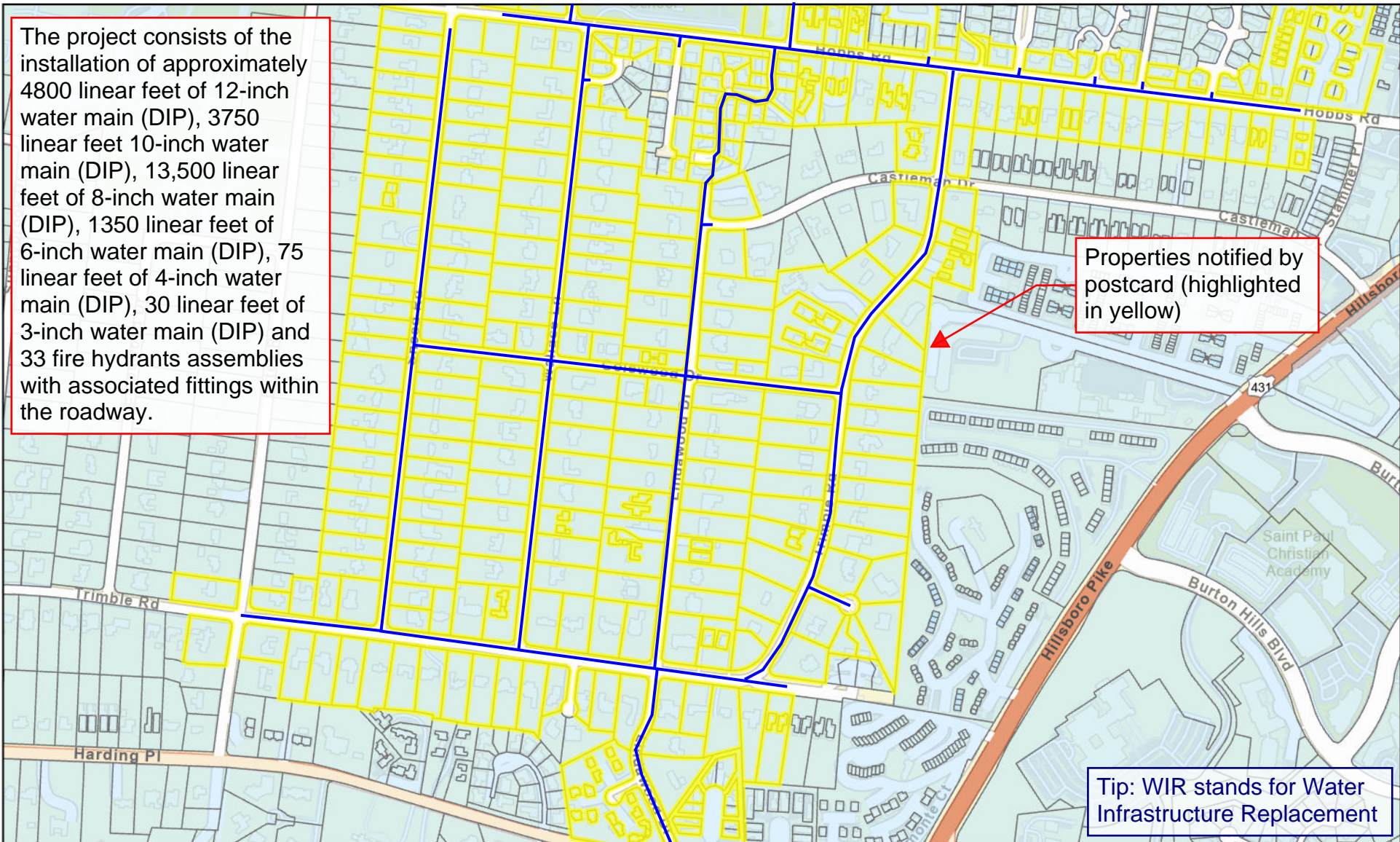


The project consists of the installation of approximately 4800 linear feet of 12-inch water main (DIP), 3750 linear feet 10-inch water main (DIP), 13,500 linear feet of 8-inch water main (DIP), 1350 linear feet of 6-inch water main (DIP), 75 linear feet of 4-inch water main (DIP), 30 linear feet of 3-inch water main (DIP) and 33 fire hydrants assemblies with associated fittings within the roadway.

Properties notified by postcard (highlighted in yellow)

Tip: WIR stands for Water Infrastructure Replacement



# 24WC0061 Hobbs Trimble WIR

Esri Community Maps Contributors, Metro Nashville Gov't, Nashville Davidson Metro Govern, © OpenStreetMap, Microsoft, Esri, TomTom, Garmin, SafeGraph, GeoTechnologies, Inc, METI/NASA, USGS, EPA, NPS, US Census Bureau, USDA, USFWS, Esri, NASA, NGA, USGS, FEMA, Metro Nashville Gov't, Esri, TomTom, Garmin, SafeGraph, GeoTechnologies, Inc, METI/NASA,

# 2025

Coordinate System: NAD 1983 StatePlane Tennessee FIPS 4100 Feet

