

This document, together with the concepts and designs presented herein, is intended only for the specific purpose and client for which it was prepared. Reuse of and improper reliance on this document without written authorization and adaptation by Kimley-Horn and Associates, Inc. shall be without liability to Kimley-Horn and Associates, Inc.

ESTIMATED QUANTITIES

SPEED CUSHIONS

6' X 10.5' SPEED CUSHION WITH ONE ARROW	8
6' X 10.5' SPEED CUSHION TWO ARROWS	4

SIGNING





W17-1 (VAR.) "SPEED CUSHION" SIGN (30" X 30")	4
W17-1 (VAR.) "SPEED CUSHIONS AHEAD" SIGN (30" X 30")	2
W13-1P "20 M.P.H" SIGN (18" X 18")	6
RADAR FEEDBACK SIGN	1

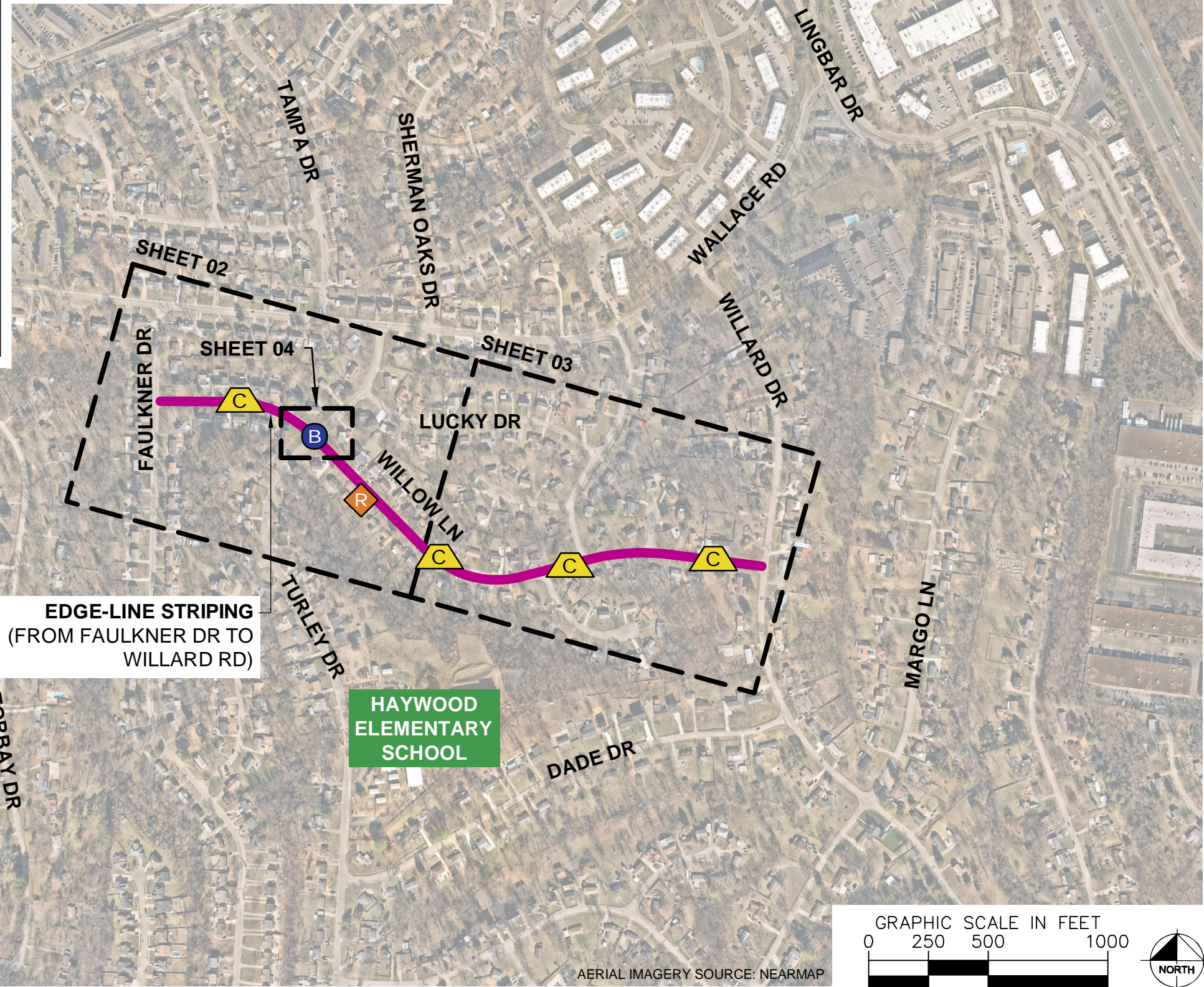
PAVEMENT MARKINGS AND DELINEATORS

4" WHITE FLEXIBLE DELINEATOR	58
4" SOLID WHITE LINE (LF)	5,100
4" DOUBLE SOLID WHITE LINE (LF)	1,072
6" SOLID WHITE LINE (LF)	321
24" WHITE STOP LINE (LF)	11

NOTE: ALL LOCATIONS ARE REFERENCED FROM CENTERLINE OF DRIVEWAYS OR OTHER LANDMARKS TO THE CENTER OF SPEED CUSHIONS OR SIGNS.

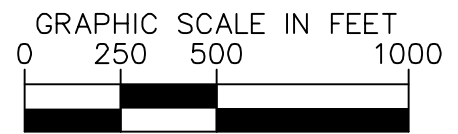
LEGEND

-  LIMITS OF TRAFFIC CALMING PROJECT
-  SPEED CUSHIONS
-  RADAR FEEDBACK SIGN
-  BULB-OUTS



EDGE-LINE STRIPING
(FROM FAULKNER DR TO WILLARD RD)

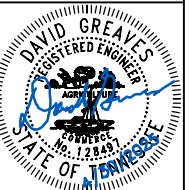
**HAYWOOD
ELEMENTARY
SCHOOL**



AERIAL IMAGERY SOURCE: NEARMAP



WILLOW LANE
TRAFFIC CALMING
NASHVILLE, TN



DESIGNED BY:	DJG
DRAWN BY:	JTL
CHECKED BY:	NDOT
DATE:	4/9/2025
KIMLEY-HORN PROJECT NO.	118800051

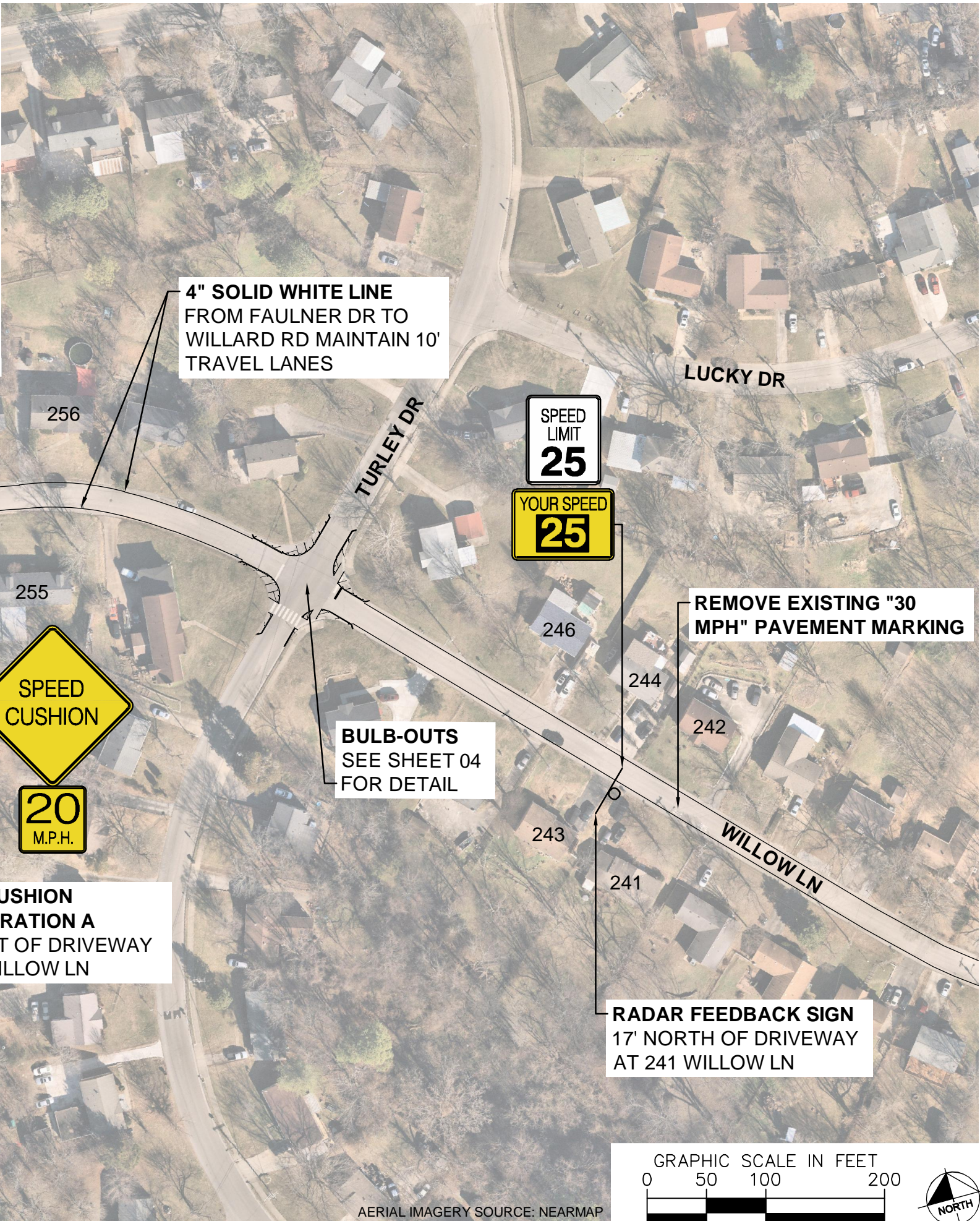
KEY

SHEET NUMBER
01

SPEED CUSHIONS



RADAR FEEDBACK SIGN



REMOVE EXISTING "30 MPH" PAVEMENT MARKING

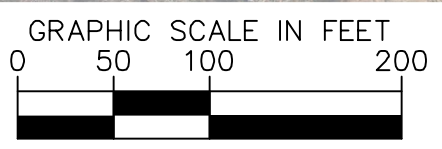
4" SOLID WHITE LINE FROM FAULKNER DR TO WILLARD RD MAINTAIN 10' TRAVEL LANES

REMOVE EXISTING "30 MPH" PAVEMENT MARKING

BULB-OUTS SEE SHEET 04 FOR DETAIL

SPEED CUSHION CONFIGURATION A 230' WEST OF DRIVEWAY AT 258 WILLOW LN

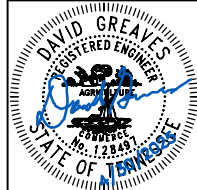
RADAR FEEDBACK SIGN 17' NORTH OF DRIVEWAY AT 241 WILLOW LN



AERIAL IMAGERY SOURCE: NEARMAP



WILLOW LANE
TRAFFIC CALMING
NASHVILLE, TN



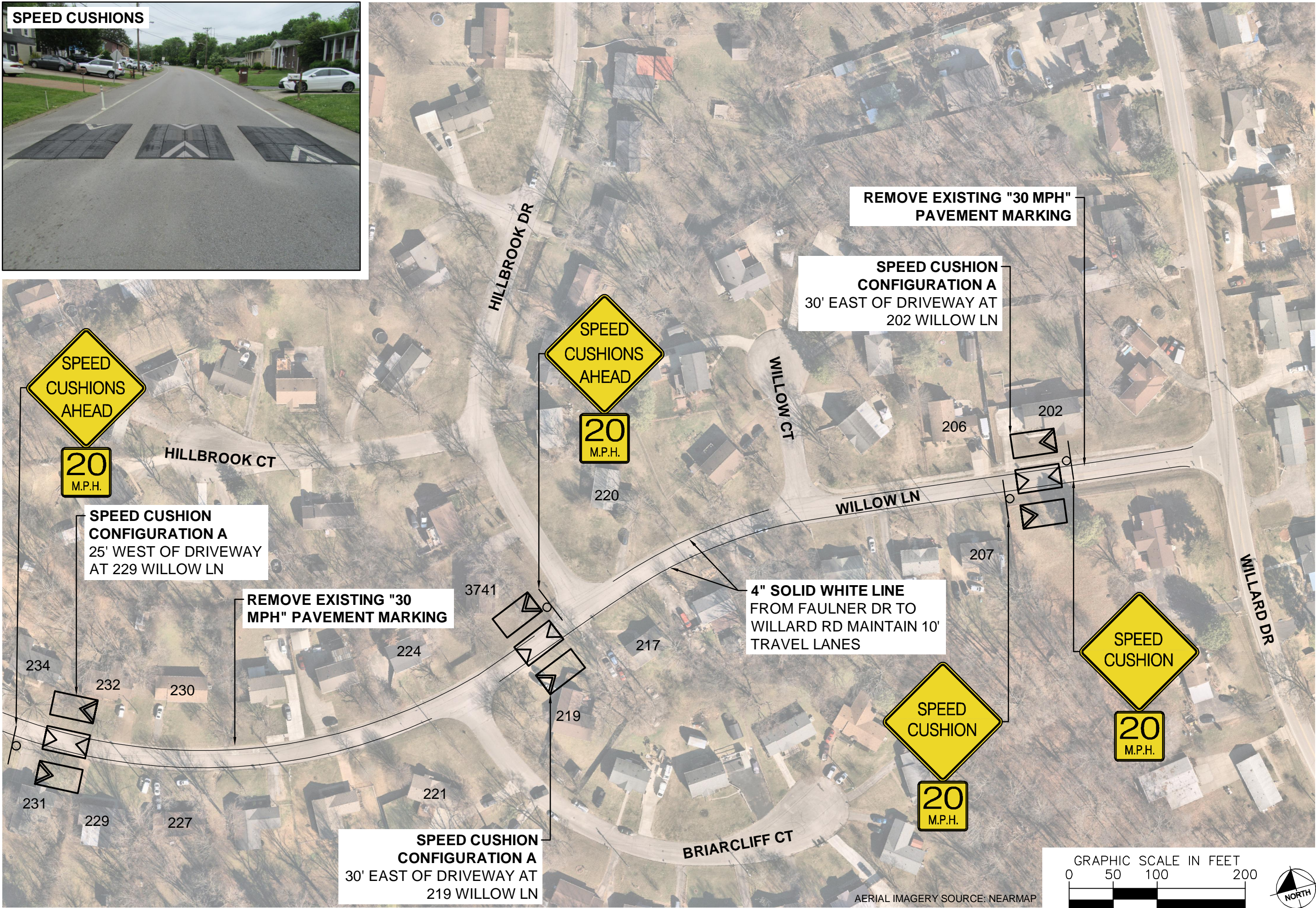
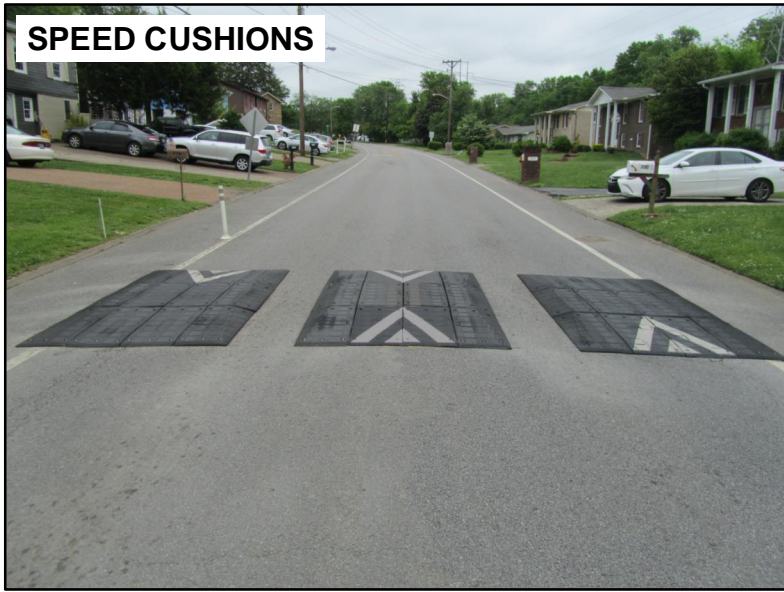
DESIGNED BY:	DJG
DRAWN BY:	JTL
CHECKED BY:	NDOT
DATE:	4/9/2025
KIMLEY-HORN PROJECT NO.	118800051

CONCEPT

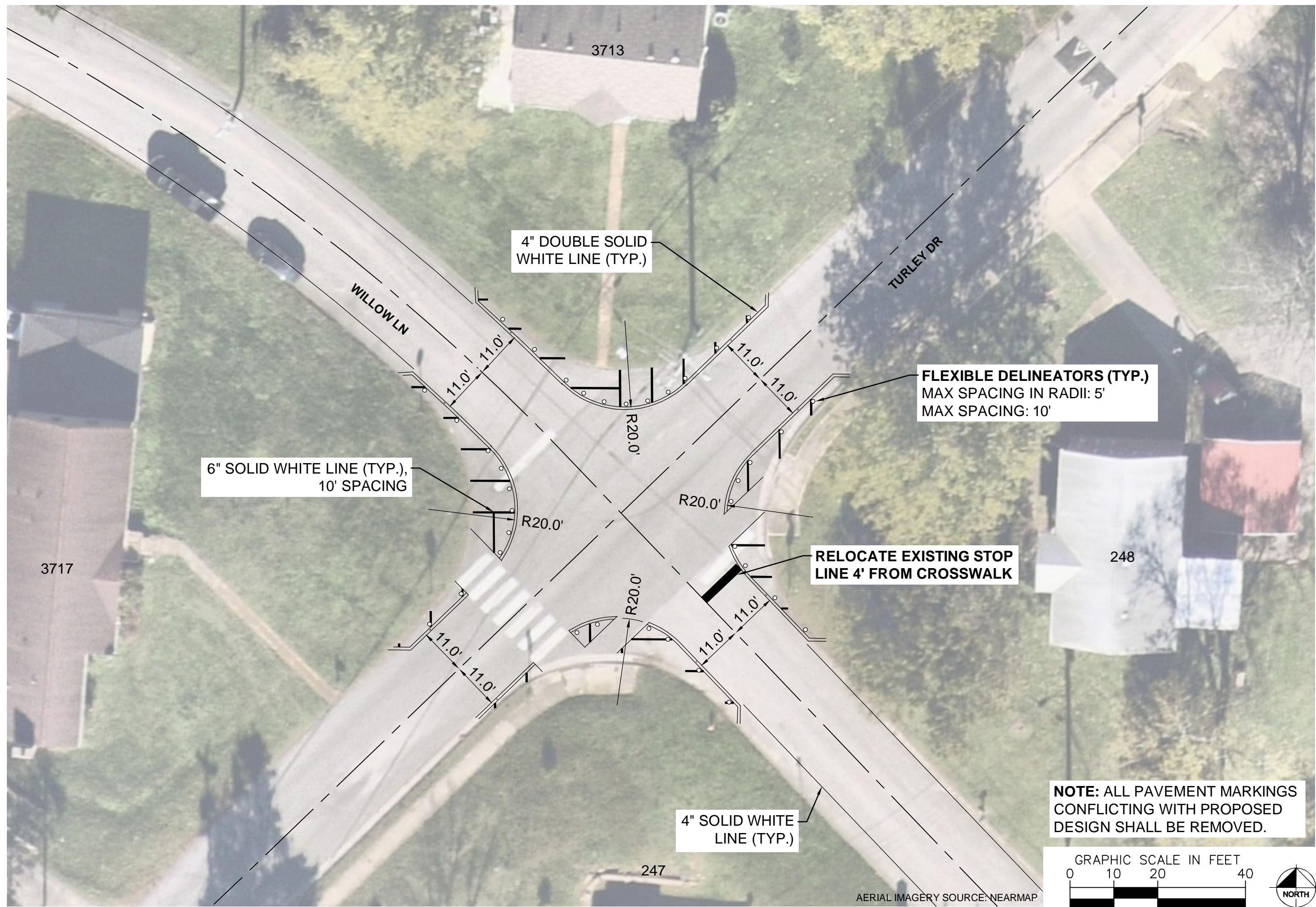
SHEET NUMBER
02

This document, together with the concepts and designs presented herein, is intended only for the specific purpose and client for which it was prepared. Reuse of and improper reliance on this document without written authorization and adaptation by Kimley-Horn and Associates, Inc. shall be without liability to Kimley-Horn and Associates, Inc.

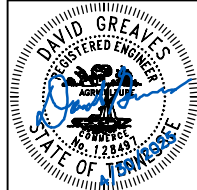
SPEED CUSHIONS



This document, together with the concepts and designs presented herein, is intended only for the specific purpose and client for which it was prepared. Reuse of and improper reliance on this document without written authorization and adaptation by Kimley-Horn and Associates, Inc. shall be without liability to Kimley-Horn and Associates, Inc.



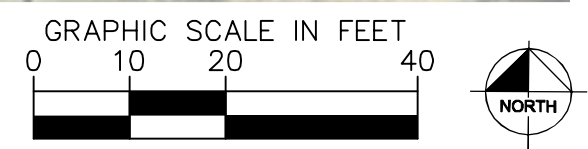
WILLOW LANE
TRAFFIC CALMING
NASHVILLE, TN



DESIGNED BY:	DJG
DRAWN BY:	JTL
CHECKED BY:	NDOT
DATE:	4/30/2025
KIMLEY-HORN PROJECT NO.:	118900051

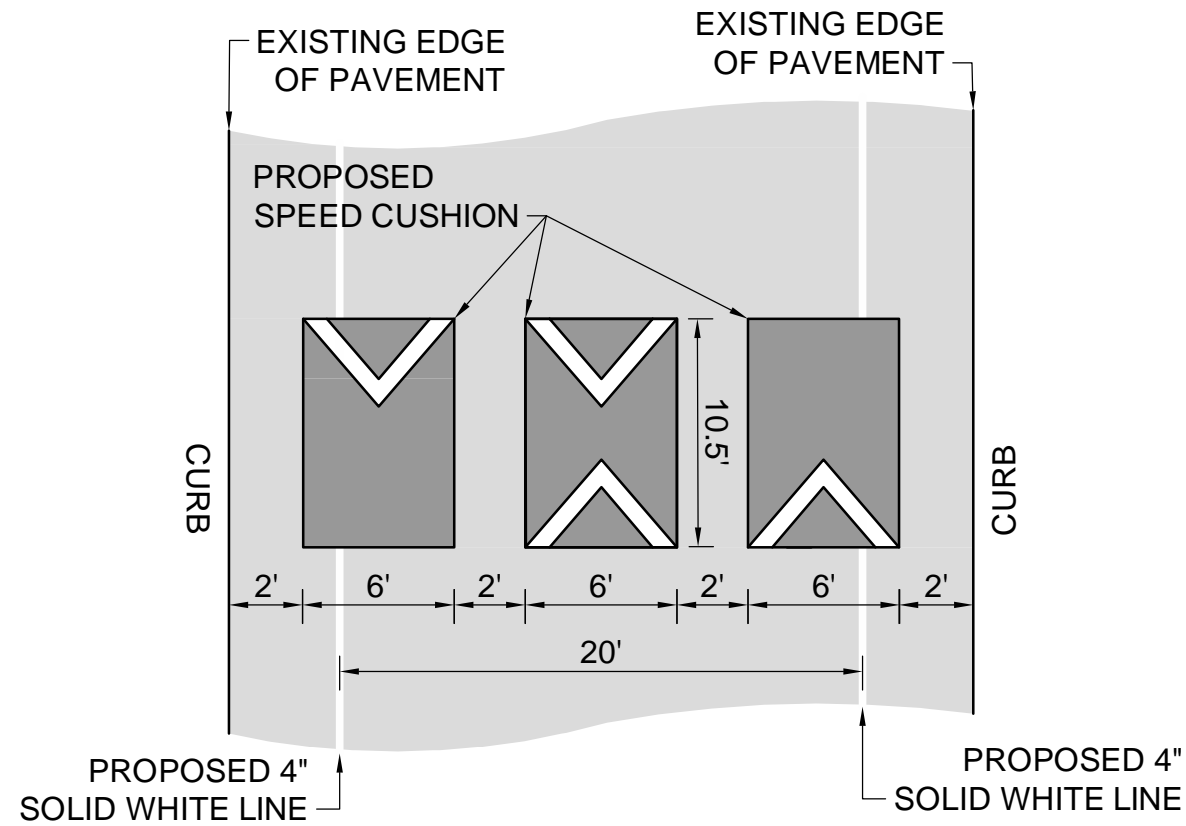
CONCEPT
SHEET NUMBER
04

**NOTE: ALL PAVEMENT MARKINGS
CONFLICTING WITH PROPOSED
DESIGN SHALL BE REMOVED.**



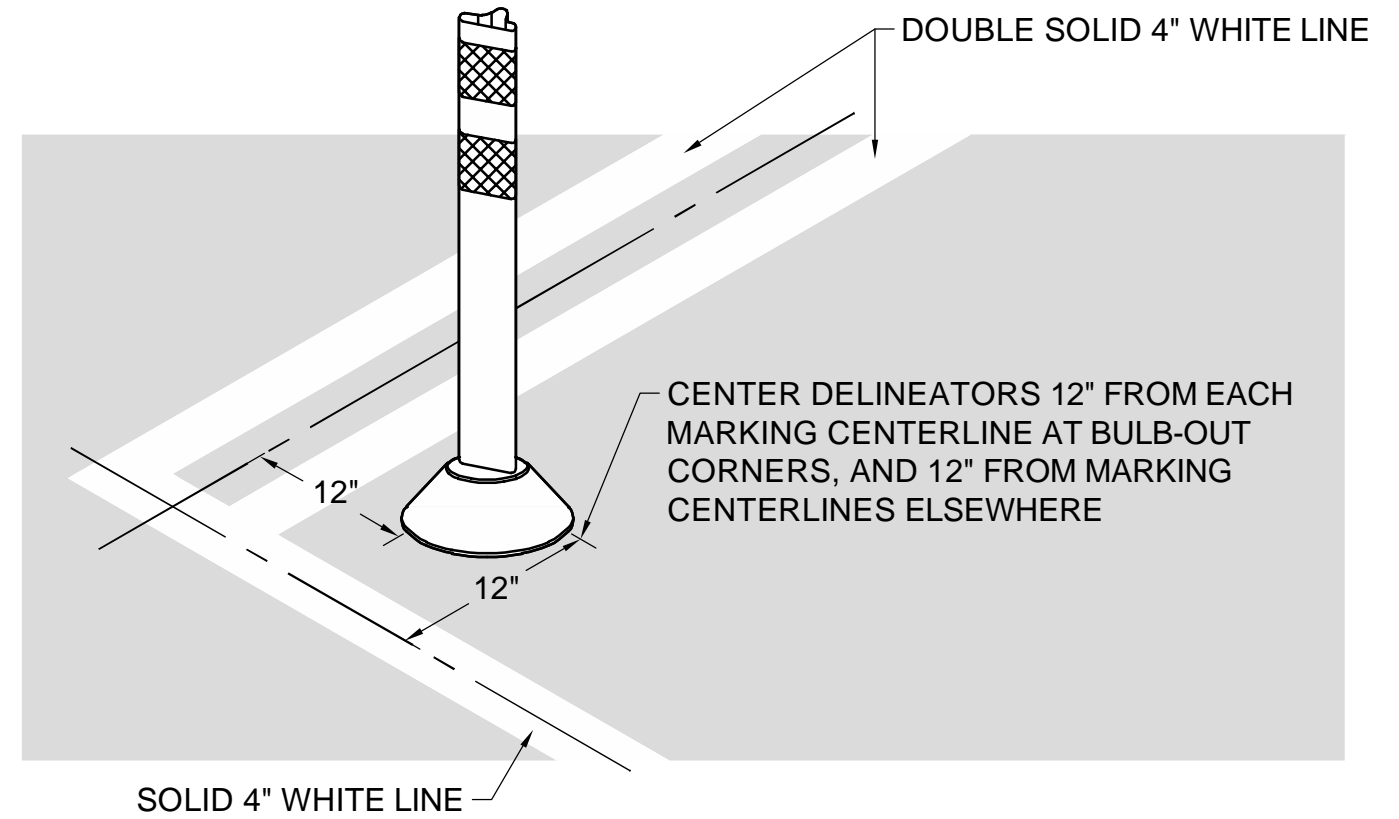
CONFIGURATION A

PAVEMENT WIDTH: 26'



DETAIL

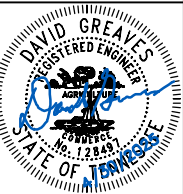
DELINEATOR PLACEMENT IN BULB-OUTS



This document, together with the concepts and designs presented herein, is intended only for the specific purpose and client for which it was prepared. Reuse of and improper reliance on this document without written authorization and adaptation by Kimley-Horn and Associates, Inc. shall be without liability to Kimley-Horn and Associates, Inc.



WILLOW LANE
TRAFFIC CALMING
NASHVILLE, TN



DESIGNED BY: DJG
DRAWN BY: JTL
CHECKED BY: NDOT
DATE: 4/30/2025
KIMLEY-HORN PROJECT NO. 118800051

DETAIL

SHEET NUMBER
05