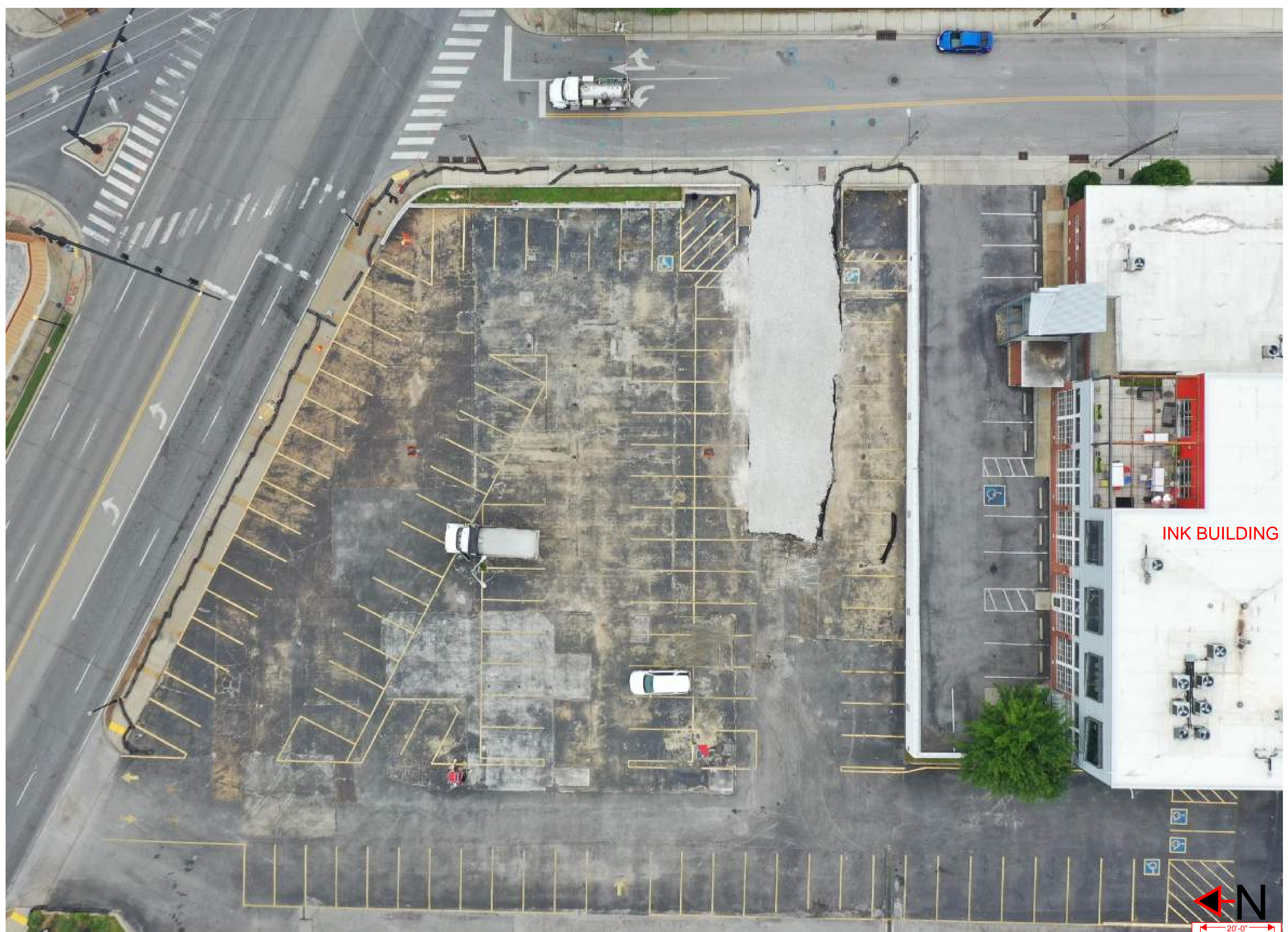
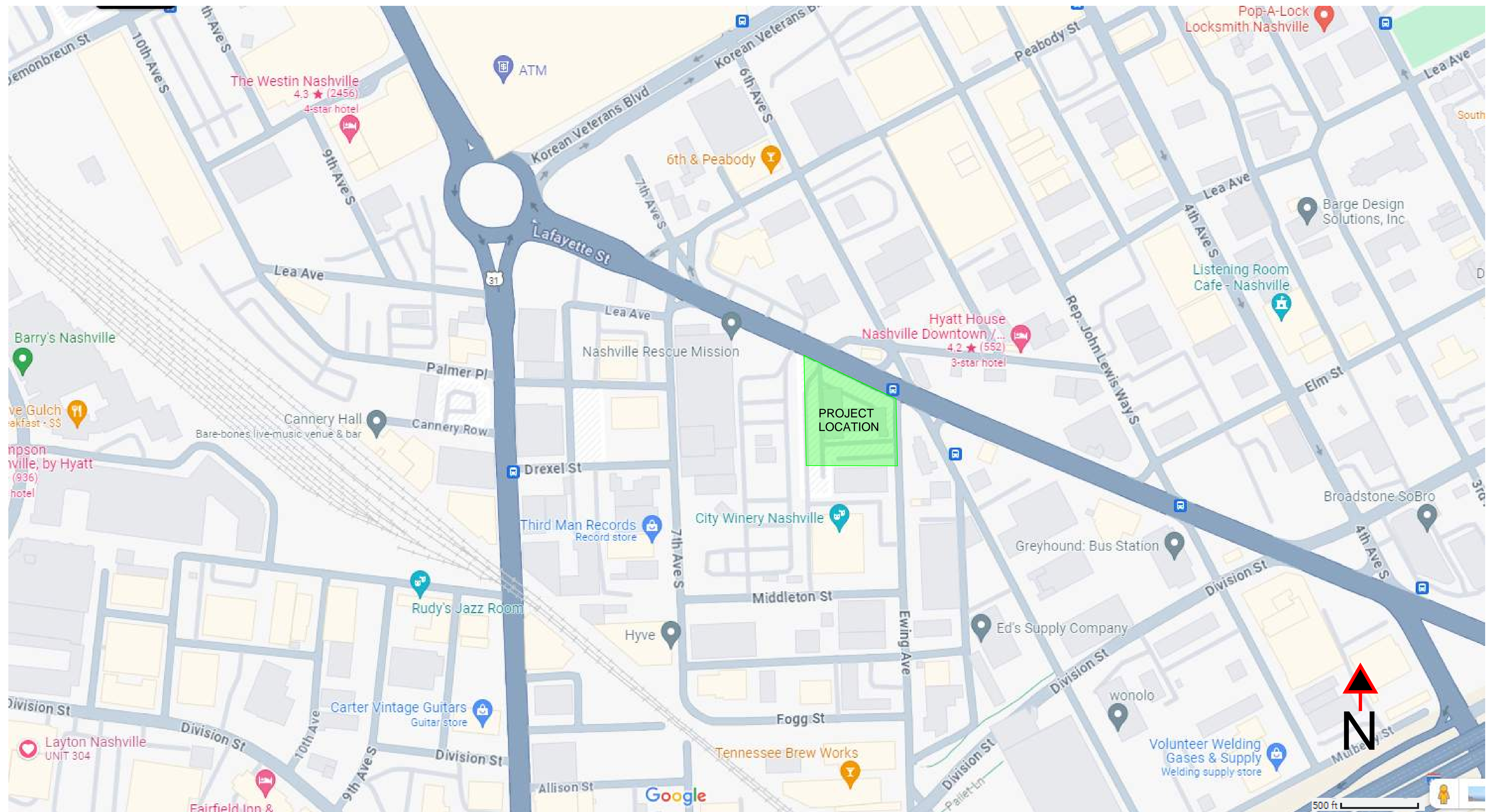


Project Location: 601 Lafayette Street, Nashville, TN 37201



Project Description: 32 story, 367 units with 5 garage subterranean levels. Parking will be onsite or along adjacent roadways. INK Building parking lot will be decreased during phases 1 and 2.

Project Working Times: Typical: 0600-1600 M-F, 0600-1400 S/S, 24 Hours during concrete placement.

Project Phases and Equipment Requirements that impact road closure:

- (1) Drilling/Blasting/Excavation: drilling rigs, dump trucks, excavators, loaders
- (2) Superstructure Concrete Placement: concrete trucks, pump trucks (for garage)
- (3) Building Window Wall/Interior Framing/MEP: Deliveries of on-time window wall components, heavy lift deliveries
- (4) Finishes: Crane demobilization, heavy lift deliveries to upper floors

PLAN NOTES

GENERAL NOTES

1. REFER TO ENLARGED UNIT PLANS FOR INFORMATION PERTAINING TO UNIT DIMENSIONS, FINISHES AND LAYOUT.
2. REFER TO REFERENCE PLANS FOR UNIT MIX, COMPLETE BUILDING LAYOUT, OVERALL PLANS PROVIDE INFORMATION ON DEMISING WALL LAYOUTS, DIMENSIONS AND TYPE. UNITS SHOWN FOR REFERENCE.
3. CONCRETE WALLS AND COLUMNS EXPOSED TO VIEW SHALL MEET ACI 301 CLASS B FINISH.
4. REFER TO EXTERIOR ASSEMBLES SHEET FOR BASIS OF DESIGN FOR PAVEMENT AND PLANTED ROOF AREA WATERPROOFING SYSTEMS.
5. REFER TO SLAB PLANS FOR DRAIN LOCATIONS.

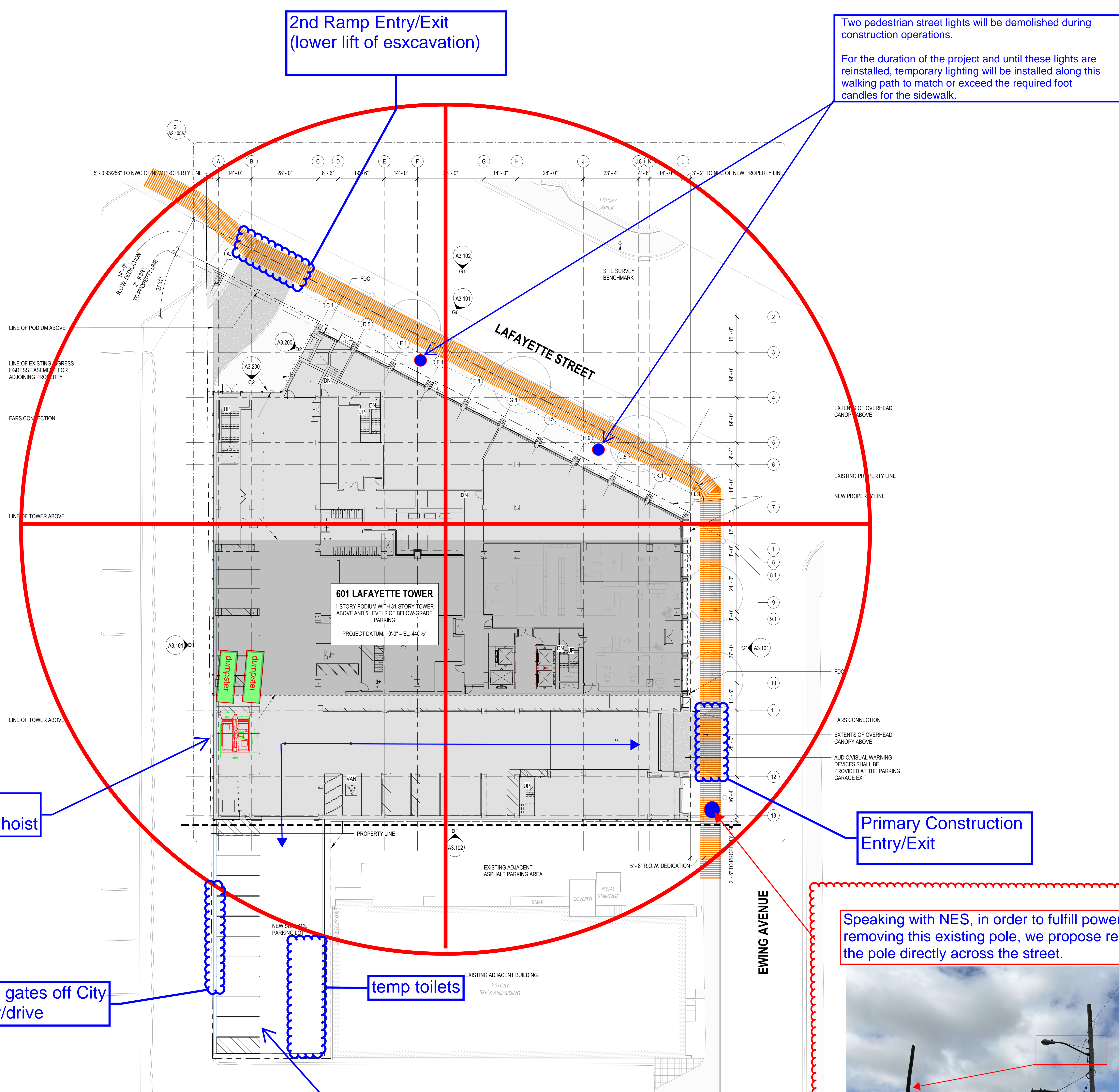
CLAYCO
THE ART & SCIENCE OF BUILDING
35 EAST WACKER DRIVE, SUITE 100
CHICAGO, IL 60601
PH: 312.683.0747 FX: 312.680.7594

Lamar Johnson Collaborative
35 EAST WACKER DRIVE, SUITE 100
CHICAGO, IL 60601
PH: 312.683.0747



Keystone Legend

Key Value	Keystone Text



ARCHITECTURAL SITE PLAN
A1.000 / 1/16" = 1'-0"



601 LAFAYETTE TOWER
601 LAFAYETTE OWNER, LLC
601 Lafayette Street Nashville, TN 37201

DRAWING ISSUE

DESCRIPTION	DATE
SCHEMATIC DESIGN	05/25/2023
DESIGN DEVELOPMENT	07/27/2023

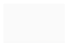

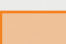
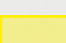
BUILDING MAP

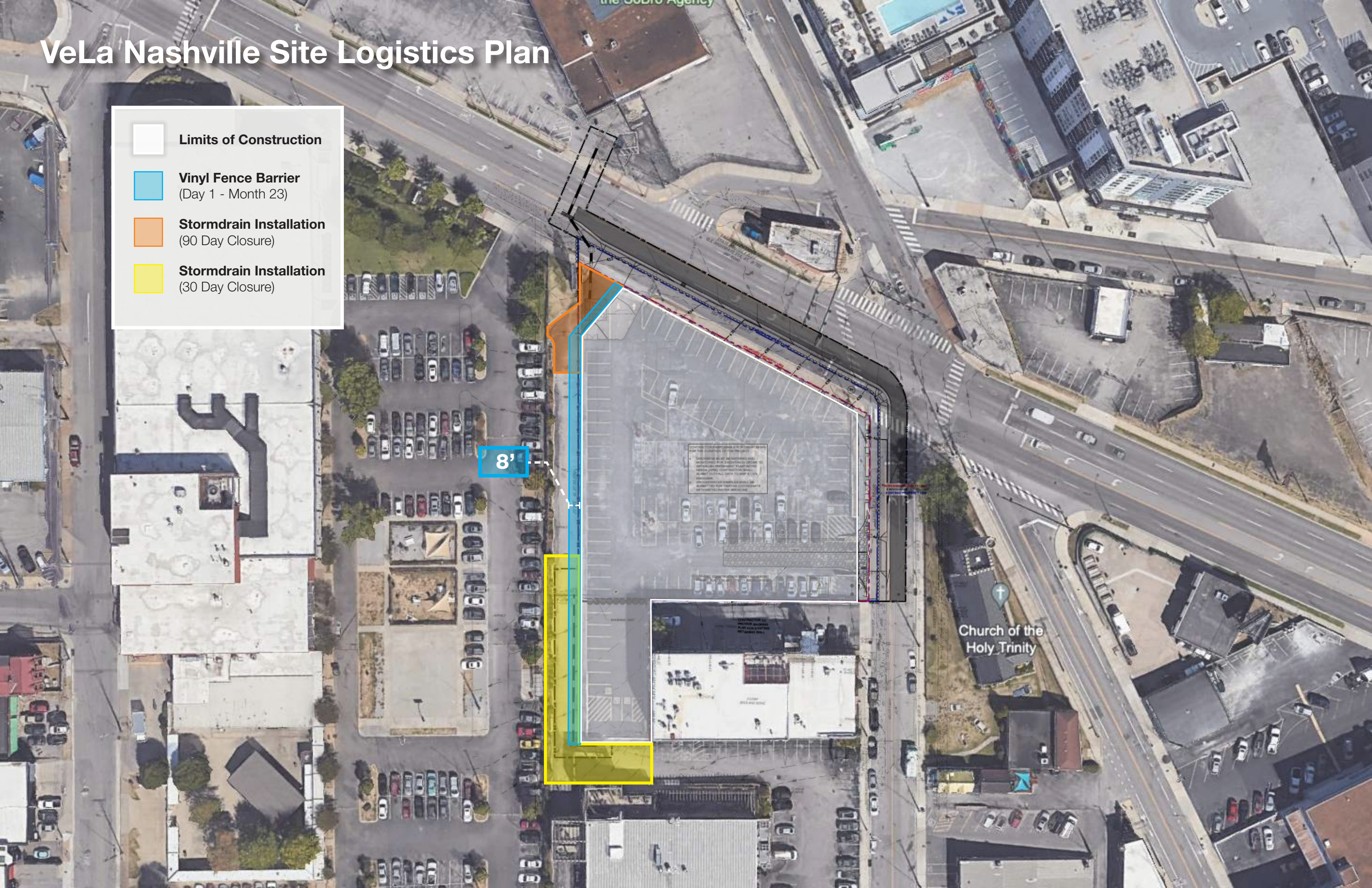
DRAWING TITLE
ARCHITECTURAL SITE PLAN

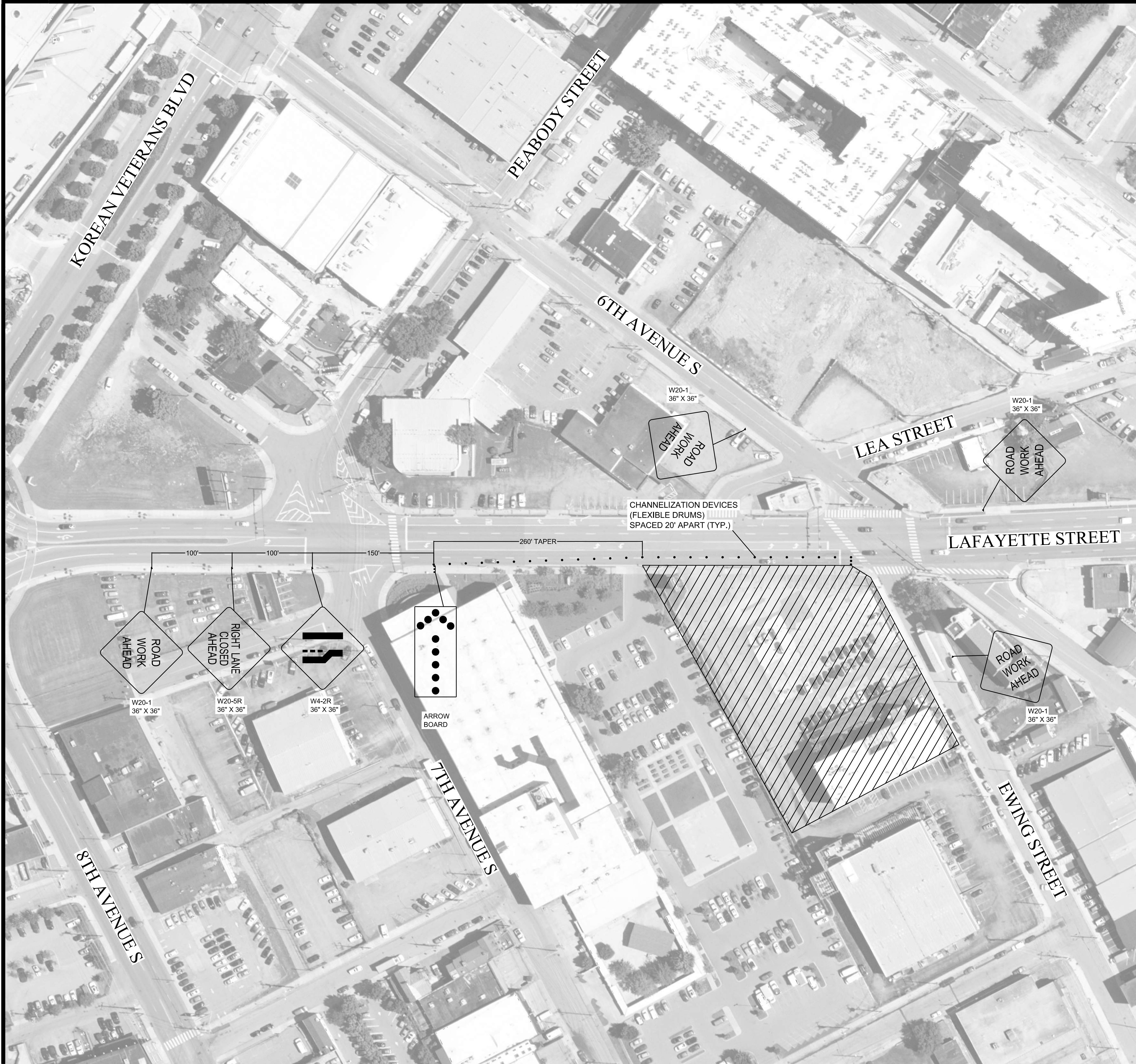
DRAWING NO.
A1.000

Job # 006770

VeLa Nashville Site Logistics Plan

-  **Limits of Construction**
-  **Vinyl Fence Barrier**
(Day 1 - Month 23)
-  **Stormdrain Installation**
(90 Day Closure)
-  **Stormdrain Installation**
(30 Day Closure)



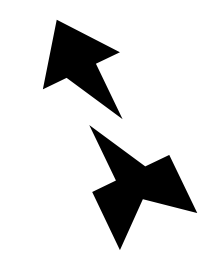


DESCRIPTION:

EASTBOUND TRAVEL LANE CLOSURE ALONG LAFAYETTE STREET IN NASHVILLE, TN.

TRAFFIC CONTROL NOTES:

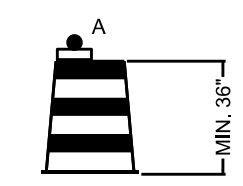
- EASTBOUND TRAVEL LANE CLOSURE TO OCCUR ALONG LAFAYETTE STREET BETWEEN 7TH AVENUE S AND EWING STREET FOR THE DURATION OF THE PROJECT.
- ALL TRAFFIC CONTROL DEVICES AND WARNING SIGNS SHOULD BE REMOVED OR COVERED AS SOON AS PRACTICAL WHEN THEY ARE NO LONGER NEEDED OR IN USE.
- ALL TRAFFIC CONTROL DEVICES, BARRICADES, BALLAST SYSTEMS, AND SIGN SUPPORT STRUCTURES USED ON ANY ROADWAY OPEN TO PUBLIC TRAVEL SHALL BE CRASHWORTHY WHEN INSTALLED FACING TRAFFIC OR TURNED AWAY FROM TRAFFIC.
- ALL WARNING SIGNS IN TEMPORARY TRAFFIC CONTROL ZONES SHALL HAVE A BLACK LEGEND AND BORDER ON AN ORANGE BACKGROUND.
- ALL REGULATORY SIGNS IN TEMPORARY TRAFFIC CONTROL ZONES SHALL HAVE A BLACK LEGEND AND BORDER ON A WHITE BACKGROUND.
- ADVANCE WARNING SIGNS TO BE PLACED ALONG THE LAFAYETTE STREET EASTBOUND APPROACH APPROXIMATELY 100 FEET APART PRIOR TO LANE SHIFT TAPER NEAR THE START OF THE WORK ZONE.
- ADVANCE WARNING SIGN TO BE PLACED ALONG THE LAFAYETTE STREET WESTBOUND APPROACH APPROXIMATELY 100 FEET PRIOR TO THE INTERSECTION WITH EWING STREET.
- ADVANCE WARNING SIGN TO BE PLACED ALONG THE EWING STREET NORTHBOUND APPROACH APPROXIMATELY 100 FEET PRIOR TO LAFAYETTE STREET.
- ADVANCE WARNING SIGN TO BE PLACED ALONG THE 6TH AVENUE S SOUTHBOUND APPROACH APPROXIMATELY 100 FEET PRIOR TO LAFAYETTE STREET.
- FLEXIBLE DRUMS WILL BE UTILIZED AS CHANNELIZATION DEVICES ALONG DIVISION STREET WITHIN THE TAPERS TO THE WORK ZONE.
- CHANNELIZATION DEVICES (FLEXIBLE DRUMS) WITHIN THE WORK ZONE TO BE SPACED TWENTY (20) FEET APART.
- FLEXIBLE DRUMS MUST BE A MINIMUM OF THIRTY-SIX (36) INCHES HIGH AND EIGHTEEN (18) INCHES WIDE WITH A MINIMUM OF TWO (2) ORANGE AND TWO (2) WHITE RETRO-REFLECTIVE HORIZONTAL STRIPES WITH THE TOP STRIPE BEING ORANGE ACCORDING TO MUTCD SECTION 6F.
- FLEXIBLE DRUMS SHOULD BE BALLASTED APPROPRIATELY ACCORDING TO THE MANUFACTURER'S STANDARDS.
- SPACING OF FLEXIBLE DRUMS NEAR DRIVEWAYS OF ADJACENT SITES TO BE ADJUSTED AS DETERMINED BY SITE CONTRACTOR.
- TRAFFIC CONTROL DEVICES SHOULD BE PLACED AS NOT TO IMPEDE ACCESS TO DRIVEWAYS LOCATED OUTSIDE OF THE WORK ZONE.
- TRAFFIC CONTROL DEVICES SHOULD BE PLACED AS NOT TO BLOCK VISIBILITY OF ANY REGULATORY SIGNS OUTSIDE OR WITHIN THE WORK ZONE.
- THE LOCATIONS OF TRAFFIC SAFETY OFFICERS (IF NECESSARY) WITHIN THE WORK ZONE AREA TO BE DETERMINED BY THE SITE COORDINATOR.
- CONTRACTOR TO COORDINATE WITH LOCAL PROPERTY OWNERS TO PROVIDE NECESSARY ACCESS TO ADJACENT DRIVEWAYS WITHIN THE WORK ZONE AREA FOR THE DURATION OF THE PROJECT.
- REFER TO TDOT STANDARD DRAWINGS, TDOT WORK ZONE FIELD ZONE MANUAL, AND THE MANUAL ON UNIFORM TRAFFIC CONTROL DEVICES (MUTCD) FOR ADDITIONAL DETAILS RELATED TO WORK ZONE DEVICES.



TENNESSEE STATE PLANE COORDINATE SYSTEM, ZONE 5301, FIPSZONE 4100; NAD 83 DATUM

TRAFFIC CONTROL LEGEND	
SYMBOL	ITEM
	WORK ZONE
	SIGN (CONSTRUCTION)
	ARROW BOARD TYPE C
	FLEXIBLE DRUMS (CHANNELIZING)

TRAFFIC CONTROL DEVICES



FLEXIBLE DRUM

TRAFFIC CONTROL PLAN

LAFAYETTE STREET
NASHVILLE, TENNESSEE

LAFAYETTE STREET - LANE CLOSURE

NO.	DATE	REVISIONS
1	05/28/24	INITIAL SUBMITTAL

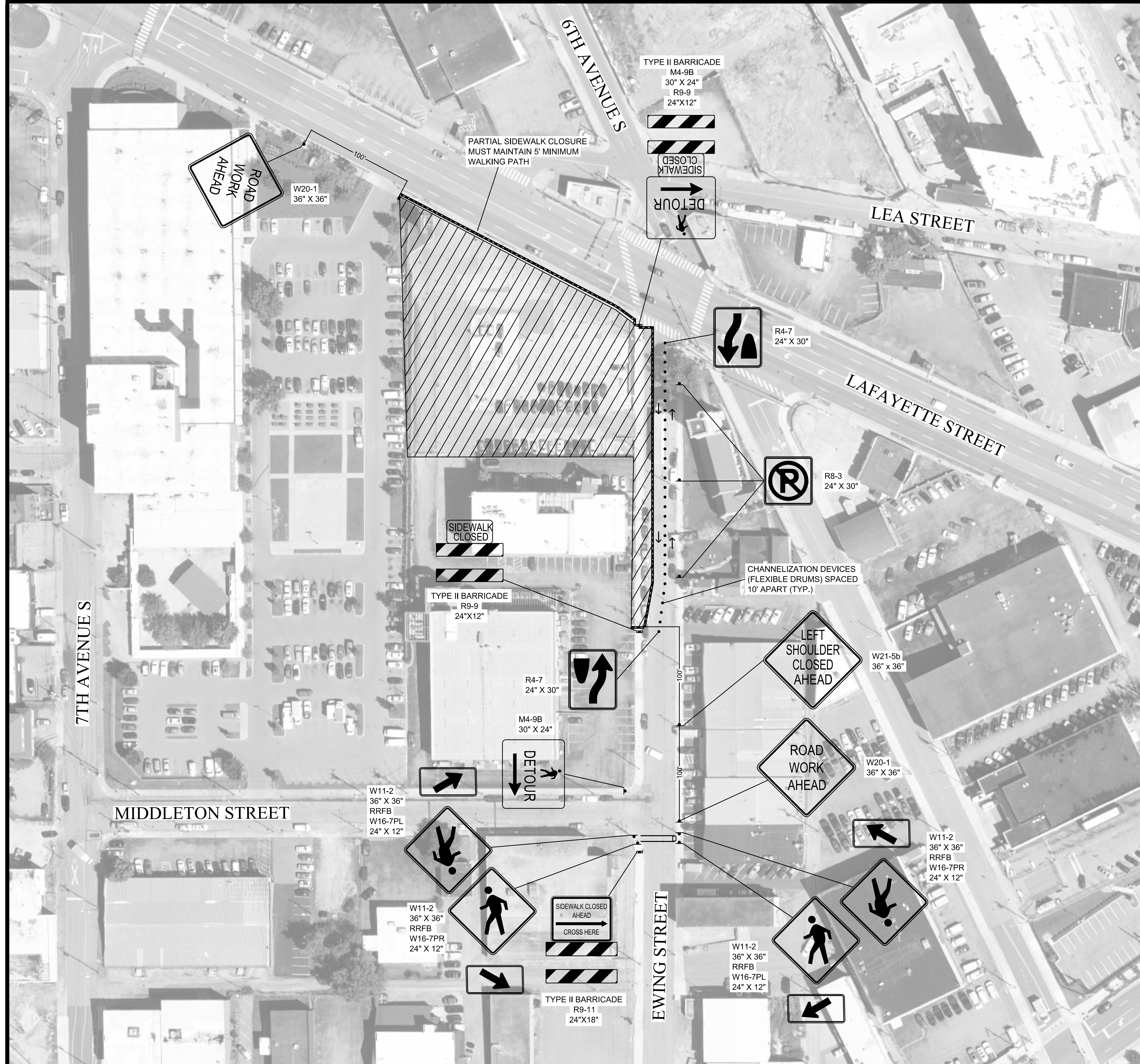
DATE:	5/28/24
SCALE:	AS SHOWN
DRAWN BY:	T-SQUARE
REVIEWER:	JDE



5/28/24

PROJECT
24-0515

SHEET
T-1.0

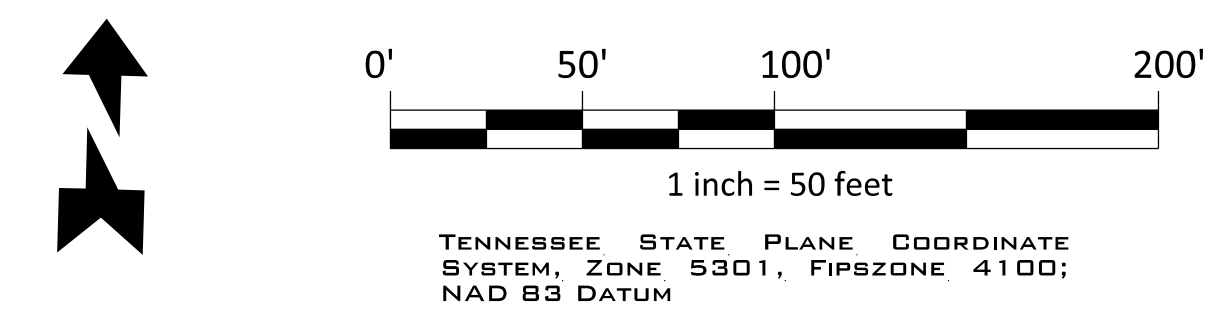


DESCRIPTION:

SOUTHBOUND PARKING LANE AND SIDEWALK CLOSURE ALONG EWING AVENUE AND PARTIAL EASTBOUND SIDEWALK CLOSURE ALONG LAFAYETTE STREET IN NASHVILLE, TN.

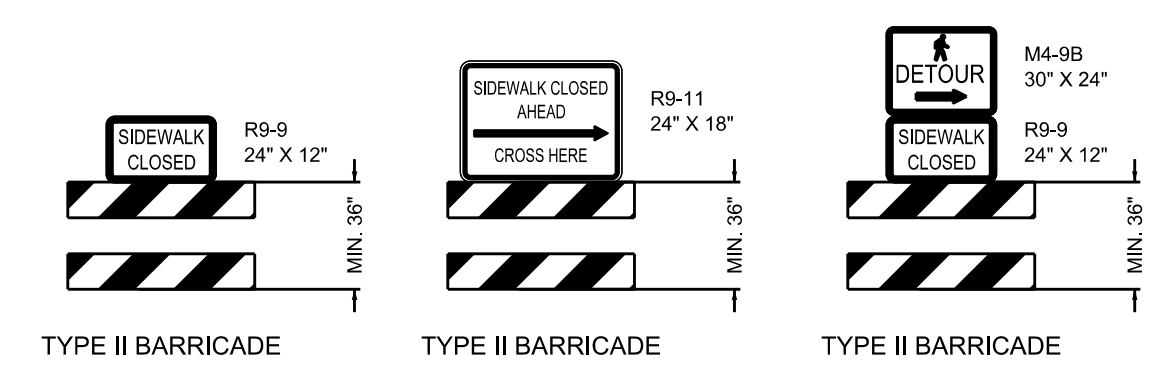
TRAFFIC CONTROL NOTES:

- SOUTHBOUND PARKING LANE AND SIDEWALK CLOSURE TO OCCUR ALONG EWING AVENUE AND PARTIAL EASTBOUND SIDEWALK CLOSURE TO OCCUR ALONG LAFAYETTE STREET ALONG THE FRONTAGE OF THE PROJECT SITE FOR THE DURATION OF THE PROJECT.
- ALL TRAFFIC CONTROL DEVICES AND WARNING SIGNS SHOULD BE REMOVED OR COVERED AS SOON AS PRACTICAL WHEN THEY ARE NO LONGER NEEDED OR IN USE.
- ALL TRAFFIC CONTROL DEVICES, BARRICADES, BALLAST SYSTEMS, AND SIGN SUPPORT STRUCTURES USED ON ANY ROADWAY OPEN TO PUBLIC TRAVEL SHALL BE CRASHWORTHY WHEN INSTALLED FACING TRAFFIC OR TURNED AWAY FROM TRAFFIC.
- ALL WARNING SIGNS IN TEMPORARY TRAFFIC CONTROL ZONES SHALL HAVE A BLACK LEGEND AND BORDER ON AN ORANGE BACKGROUND.
- ALL REGULATORY SIGNS IN TEMPORARY TRAFFIC CONTROL ZONES SHALL HAVE A BLACK LEGEND AND BORDER ON A WHITE BACKGROUND.
- ADVANCE WARNING SIGNS TO BE PLACED ALONG THE LAFAYETTE STREET EASTBOUND APPROACH APPROXIMATELY 100 FEET PRIOR TO PARTIAL SIDEWALK CLOSURE.
- ADVANCE WARNING SIGN TO BE PLACED ALONG THE EWING AVENUE NORTHBOUND APPROACH APPROXIMATELY 100 FEET PRIOR TO THE START OF THE WORK ZONE.
- PORTABLE WATER-FILLED BARRIERS WITH FENCES WILL BE UTILIZED FOR THE PARTIAL SIDEWALK CLOSURE ALONG LAFAYETTE STREET AND EWING AVENUE TO SEPARATE THE WORK ZONE FROM THE PARTIALLY OPEN SIDEWALK.
- THE PARTIAL EASTBOUND SIDEWALK CLOSURE ALONG LAFAYETTE STREET MUST MAINTAIN A MINIMUM OF FIVE (5) FEET AND IT MUST BE ACCESSIBLE TO PEDESTRIANS WITH DISABILITIES FOR THE DURATION OF THE PROJECT.
- PORTABLE WATER-FILLED BARRIERS MUST BE INTERLOCKED AND FILLED ACCORDING TO MANUFACTURER'S STANDARDS TO PROVIDE NECESSARY CRASHWORTHINESS.
- PORTABLE WATER-FILLED BARRIERS SHALL BE SUPPLEMENTED WITH STANDARD DELINEATION TO IMPROVE VISIBILITY DURING DAYTIME AND NIGHTTIME OPERATIONS.
- EACH PORTABLE WATER-FILLED BARRIER SECTION SHOULD BE MADE OF POLYETHYLENE PLASTIC MEASURING APPROXIMATELY 6.5 FEET IN LENGTH AND A MINIMUM OF 1.75 FEET IN WIDTH.
- TEMPORARY CROSSWALK TO BE INSTALLED ON EWING AVENUE NEAR THE INTERSECTION WITH MIDDLETON STREET.
- THE TEMPORARY CROSSWALK TO BE CONSTRUCTED BASED ON MUTCD TYPICAL APPLICATION 29.
- THE TEMPORARY CROSSWALK MUST MAINTAIN A MINIMUM OF FIVE (5) FEET AND IT MUST BE ACCESSIBLE TO PEDESTRIANS WITH DISABILITIES AND SHOULD BE CONSTRUCTED ACCORDING TO NDOT AND TDOT STANDARDS.
- AS NEEDED, THE TEMPORARY CROSSWALKS WILL INCLUDE A TEMPORARY CURB RAMP TO TRANSITION FROM THE SIDEWALK WITH A MINIMUM WIDTH OF FIVE (5) FEET AND NO MORE THAN A TWO PERCENT (2%) GRADE.
- RECTANGULAR RAPID FLASHING BEACONS TO BE ATTACHED TO THE PEDESTRIAN SYMBOL SIGNS (W11-2) NEAR THE TEMPORARY CROSSWALK ALONG EWING AVENUE.
- TYPE 2 BARRICADES WITH A MOUNTED PEDESTRIAN DETOUR (M4-9B) AND A SIDEWALK CLOSED (R9-9) SIGN TO BE PLACED ALONG THE SOUTHBOUND APPROACH OF THE SIDEWALK ON THE WEST SIDE OF EWING AVENUE NEAR LAFAYETTE STREET.
- TYPE 2 BARRICADES WITH A MOUNTED SIDEWALK CLOSED (R9-9) SIGN TO BE PLACED ALONG THE NORTHBOUND APPROACH OF THE SIDEWALK ON THE WEST SIDE OF EWING AVENUE NEAR THE PROJECT SITE.
- TYPE 2 BARRICADES WITH A MOUNTED SIDEWALK CLOSED AHEAD CROSS HERE (R9-11) SIGN TO BE PLACED ALONG THE NORTHBOUND APPROACH OF THE SIDEWALK ON THE WEST SIDE OF EWING AVENUE NEAR MIDDLETON STREET.
- TYPE 2 BARRICADES MUST BE A MINIMUM LENGTH OF THIRTY-SIX (36) INCHES ACCORDING TO TDOT STANDARDS. EACH BARRICADE RAIL MUST BE EIGHT (8) TO TWELVE (12) INCHES WIDE.
- THE STRIPES ON TYPE 2 BARRICADE RAILS SHALL BE ALTERNATING ORANGE AND WHITE RETROREFLECTIVE STRIPES SLOPING DOWNWARD AT AN ANGLE OF 45 DEGREES. THE STRIPES SHOULD BE POSITIONED TO SLOPE DOWNWARD TOWARD THE CENTER OF THE BARRICADE OR BARRICADES.
- THE SOUTHBOUND PARKING LANE ALONG EWING AVENUE WILL BE CLOSED FOR THE DURATION OF THE PROJECT.
- BOTH NORTHBOUND AND SOUTHBOUND TRAVEL LANES ALONG EWING AVENUE REMAIN OPEN AND MUST REMAIN A MINIMUM OF TEN (10) FEET AS MEASURED FROM THE NEAR FACE OF THE TRAFFIC CONTROL DEVICES.
- FLEXIBLE DRUMS WILL BE UTILIZED AS CHANNELIZATION DEVICES ALONG EWING AVENUE WITHIN THE WORK ZONE.
- CHANNELIZATION DEVICES (FLEXIBLE DRUMS) WITHIN THE WORK ZONE TO BE SPACED TEN (10) FEET APART.
- FLEXIBLE DRUMS MUST BE A MINIMUM OF THIRTY-SIX (36) INCHES HIGH AND EIGHTEEN (18) INCHES WIDE WITH A MINIMUM OF TWO (2) ORANGE AND TWO (2) WHITE RETRO-REFLECTIVE HORIZONTAL STRIPES WITH THE TOP STRIPE BEING ORANGE ACCORDING TO MUTCD SECTION 6F.
- FLEXIBLE DRUMS SHOULD BE BALLASTED APPROPRIATELY ACCORDING TO THE MANUFACTURER'S STANDARDS.
- SPACING OF FLEXIBLE DRUMS NEAR DRIVEWAYS OF ADJACENT SITES TO BE ADJUSTED AS DETERMINED BY SITE CONTRACTOR.
- TRAFFIC CONTROL DEVICES SHOULD BE PLACED AS NOT TO IMPEDE ACCESS TO DRIVEWAYS LOCATED OUTSIDE OF THE WORK ZONE.
- TRAFFIC CONTROL DEVICES SHOULD BE PLACED AS NOT TO BLOCK VISIBILITY OF ANY REGULATORY SIGNS OUTSIDE OR WITHIN THE WORK ZONE.
- ALL SIGNS SHOULD BE MOUNTED ON POSTS TO AVOID BLOCKING THE SIDEWALK.
- ENSURE ALL NECESSARY CROSSWALKS HAVE ADA COMPLIANT RAMPS WITH DETECTABLE SURFACES.
- INSTALL NO PARKING SIGNS ALONG THE NORTHBOUND APPROACH OF EWING AVENUE FOR THE DURATION OF THE PROJECT.
- REFER TO TDOT STANDARD DRAWINGS, TDOT WORK ZONE FIELD ZONE MANUAL, AND THE MANUAL ON UNIFORM TRAFFIC CONTROL DEVICES (MUTCD) FOR ADDITIONAL DETAILS RELATED TO WORK ZONE DEVICES.



TRAFFIC CONTROL LEGEND	
SYMBOL	ITEM
	WORK ZONE
	SIGN (CONSTRUCTION)
	PLASTIC WATER-FILLED BARRIER WITH FENCE
	FLEXIBLE DRUMS (CHANNELIZING)

TRAFFIC CONTROL DEVICES



NO.	DATE	REVISIONS
1	10/23/24	INITIAL SUBMITTAL
2	02/04/25	REVISION PER NDOT COMMENTS

DATE: 04/04/2025
 SCALE: AS SHOWN
 DRAWN BY: T-SQUARE
 REVIEWER: JDE

TRAFFIC CONTROL PLAN

EWING AVENUE & LAFAYETTE STREET
 NASHVILLE, TENNESSEE

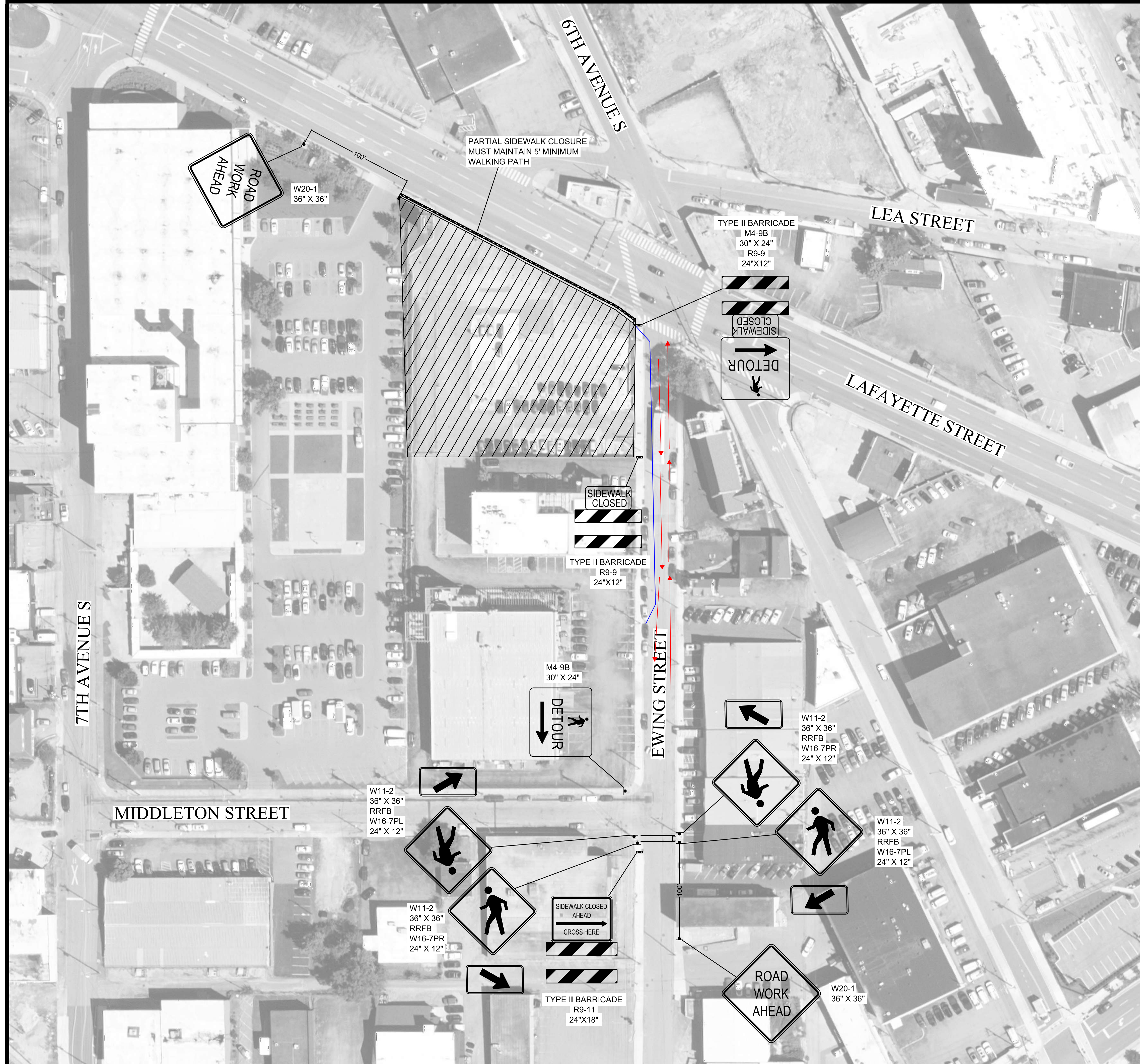
EWING AVENUE - SIDEWALK & LANE CLOSURE



4/4/25

PROJECT
 24-1033

SHEET
 T-1.0

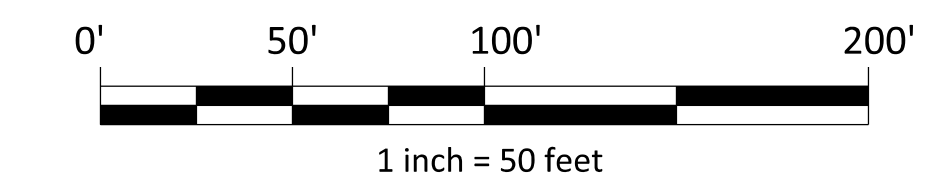
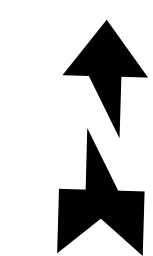


DESCRIPTION:

SOUTHBOUND SIDEWALK CLOSURE ALONG EWING AVENUE AND PARTIAL EASTBOUND SIDEWALK CLOSURE ALONG LAFAYETTE STREET IN NASHVILLE, TN.

TRAFFIC CONTROL NOTES:

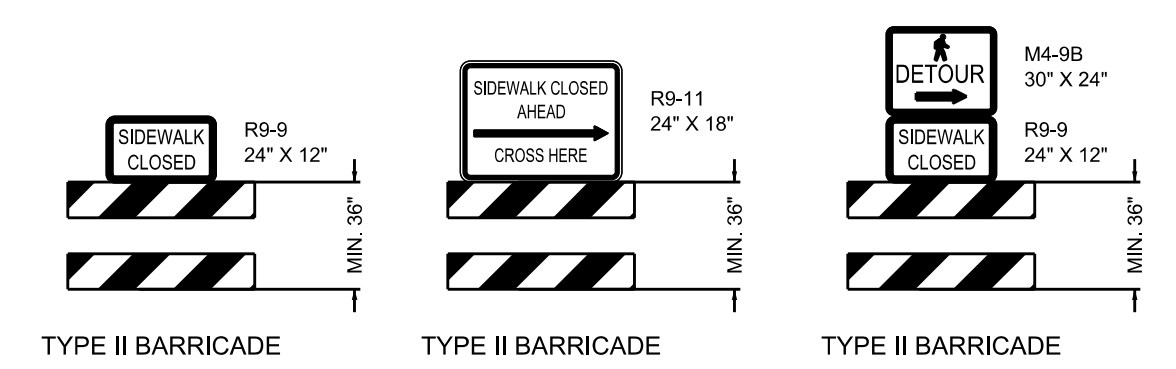
1. SOUTHBOUND SIDEWALK CLOSURE TO OCCUR ALONG EWING AVENUE AND PARTIAL EASTBOUND SIDEWALK CLOSURE TO OCCUR ALONG LAFAYETTE STREET NEAR THE FRONTAGE OF THE PROJECT SITE FOR THE DURATION OF THE PROJECT.
2. ALL TRAFFIC CONTROL DEVICES AND WARNING SIGNS SHOULD BE REMOVED OR COVERED AS SOON AS PRACTICAL WHEN THEY ARE NO LONGER NEEDED OR IN USE.
3. ALL TRAFFIC CONTROL DEVICES, BARRICADES, BALLAST SYSTEMS, AND SIGN SUPPORT STRUCTURES USED ON ANY ROADWAY OPEN TO PUBLIC TRAVEL SHALL BE CRASHWORTHY WHEN INSTALLED FACING TRAFFIC OR TURNED AWAY FROM TRAFFIC.
4. ALL WARNING SIGNS IN TEMPORARY TRAFFIC CONTROL ZONES SHALL HAVE A BLACK LEGEND AND BORDER ON AN ORANGE BACKGROUND.
5. ALL REGULATORY SIGNS IN TEMPORARY TRAFFIC CONTROL ZONES SHALL HAVE A BLACK LEGEND AND BORDER ON A WHITE BACKGROUND.
6. ADVANCE WARNING SIGNS TO BE PLACED ALONG THE LAFAYETTE STREET EASTBOUND APPROACH APPROXIMATELY 100 FEET PRIOR TO PARTIAL SIDEWALK CLOSURE.
7. ADVANCE WARNING SIGN TO BE PLACED ALONG THE EWING AVENUE NORTHBOUND APPROACH APPROXIMATELY 100 FEET PRIOR TO THE TEMPORARY CROSSWALK NEAR THE INTERSECTION WITH MIDDLETON STREET.
8. PORTABLE WATER-FILLED BARRIERS WITH FENCES WILL BE UTILIZED FOR THE PARTIAL SIDEWALK CLOSURE ALONG LAFAYETTE STREET TO SEPARATE THE WORK ZONE FROM THE PARTIALLY OPEN SIDEWALK.
9. THE PARTIAL EASTBOUND SIDEWALK CLOSURE ALONG LAFAYETTE STREET MUST MAINTAIN A MINIMUM OF FIVE (5) FEET AND IT MUST BE ACCESSIBLE TO PEDESTRIANS WITH DISABILITIES FOR THE DURATION OF THE PROJECT.
10. PORTABLE WATER-FILLED BARRIERS MUST BE INTERLOCKED AND FILLED ACCORDING TO MANUFACTURER'S STANDARDS TO PROVIDE NECESSARY CRASHWORTHINESS.
11. PORTABLE WATER-FILLED BARRIERS SHALL BE SUPPLEMENTED WITH STANDARD DELINEATION TO IMPROVE VISIBILITY DURING DAYTIME AND NIGHTTIME OPERATIONS.
12. EACH PORTABLE WATER-FILLED BARRIER SECTION SHOULD BE MADE OF POLYETHYLENE PLASTIC MEASURING APPROXIMATELY 6.5 FEET IN LENGTH AND A MINIMUM OF 1.75 FEET IN WIDTH.
13. TEMPORARY CROSSWALK TO BE INSTALLED ON EWING AVENUE NEAR THE INTERSECTION WITH MIDDLETON STREET.
14. THE TEMPORARY CROSSWALK TO BE CONSTRUCTED BASED ON MUTCD TYPICAL APPLICATION 29.
15. THE TEMPORARY CROSSWALK MUST MAINTAIN A MINIMUM OF FIVE (5) FEET AND IT MUST BE ACCESSIBLE TO PEDESTRIANS WITH DISABILITIES AND SHOULD BE CONSTRUCTED ACCORDING TO NDOT AND TDOT STANDARDS.
16. AS NEEDED, THE TEMPORARY CROSSWALKS WILL INCLUDE A TEMPORARY CURB RAMPS TO TRANSITION FROM THE SIDEWALK WITH A MINIMUM WIDTH OF FIVE (5) FEET AND NO MORE THAN A TWO PERCENT (2%) GRADE.
17. RECTANGULAR RAPID FLASHING BEACONS TO BE ATTACHED TO THE PEDESTRIAN SYMBOL SIGNS (W11-2) NEAR THE TEMPORARY CROSSWALK ALONG EWING AVENUE.
18. TYPE 2 BARRICADES WITH A MOUNTED PEDESTRIAN DETOUR (M4-9B) AND A SIDEWALK CLOSED (R9-9) SIGN TO BE PLACED ALONG THE SOUTHBOUND APPROACH OF THE SIDEWALK ON THE WEST SIDE OF EWING AVENUE NEAR LAFAYETTE STREET.
19. TYPE 2 BARRICADES WITH A MOUNTED SIDEWALK CLOSED (R9-9) SIGN TO BE PLACED ALONG THE NORTHBOUND APPROACH OF THE SIDEWALK ON THE WEST SIDE OF EWING AVENUE NEAR THE PROJECT SITE.
20. TYPE 2 BARRICADES WITH A MOUNTED SIDEWALK CLOSED AHEAD CROSS HERE (R9-11) SIGN TO BE PLACED ALONG THE NORTHBOUND APPROACH OF THE SIDEWALK ON THE WEST SIDE OF EWING AVENUE NEAR MIDDLETON STREET.
21. TYPE 2 BARRICADES MUST BE A MINIMUM LENGTH OF THIRTY-SIX (36) INCHES ACCORDING TO TDOT STANDARDS. EACH BARRICADE RAIL MUST BE EIGHT (8) TO TWELVE (12) INCHES WIDE.
22. THE STRIPES ON TYPE 2 BARRICADE RAILS SHALL BE ALTERNATING ORANGE AND WHITE RETROREFLECTIVE STRIPES SLOPING DOWNWARD AT AN ANGLE OF 45 DEGREES. THE STRIPES SHOULD BE POSITIONED TO SLOPE DOWNWARD TOWARD THE CENTER OF THE BARRICADE OR BARRICADES.
23. TRAFFIC CONTROL DEVICES SHOULD BE PLACED AS NOT TO IMPEDE ACCESS TO DRIVEWAYS LOCATED OUTSIDE OF THE WORK ZONE.
24. TRAFFIC CONTROL DEVICES SHOULD BE PLACED AS NOT TO BLOCK VISIBILITY OF ANY REGULATORY SIGNS OUTSIDE OR WITHIN THE WORK ZONE.
25. ALL SIGNS SHOULD BE MOUNTED ON POSTS TO AVOID BLOCKING THE SIDEWALK.
26. ENSURE ALL NECESSARY CROSSWALKS HAVE ADA COMPLIANT RAMPS WITH DETECTABLE SURFACES.
27. REFER TO TDOT STANDARD DRAWINGS, TDOT WORK ZONE FIELD ZONE MANUAL, AND THE MANUAL ON UNIFORM TRAFFIC CONTROL DEVICES (MUTCD) FOR ADDITIONAL DETAILS RELATED TO WORK ZONE DEVICES.



TENNESSEE STATE PLANE COORDINATE SYSTEM, ZONE 5301, FIPSZONE 4100; NAD 83 DATUM

TRAFFIC CONTROL LEGEND	
SYMBOL	ITEM
	WORK ZONE
	SIGN (CONSTRUCTION)
	PLASTIC WATER-FILLED BARRIER WITH FENCE

TRAFFIC CONTROL DEVICES



NO.	DATE	REVISIONS
1	10/23/24	INITIAL SUBMITTAL

TRAFFIC CONTROL PLAN
 EWING AVENUE & LAFAYETTE STREET
 NASHVILLE, TENNESSEE



10/23/24

PROJECT
24-1033

SHEET
T-1.0