




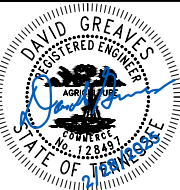
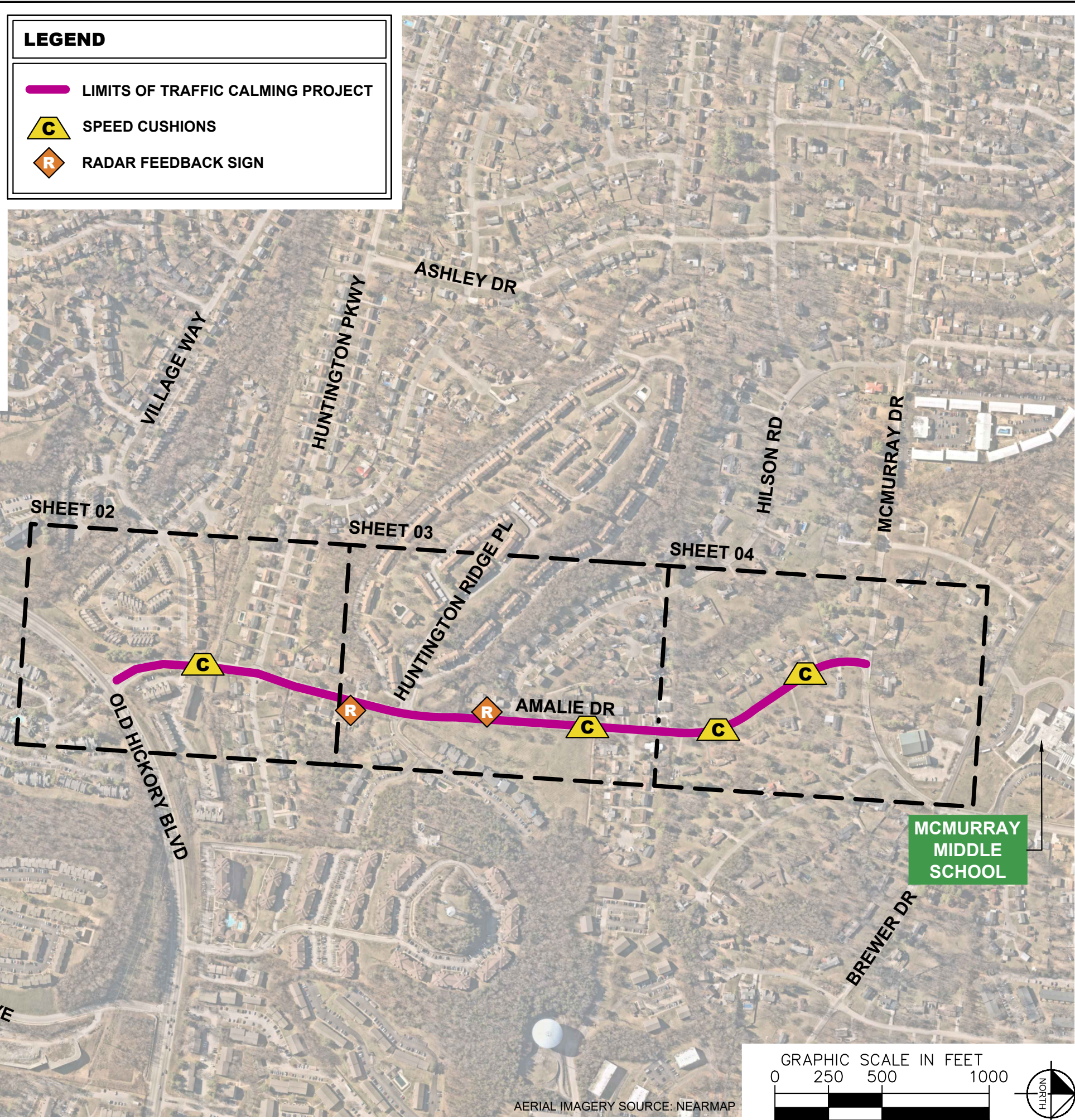
### ESTIMATED QUANTITIES

SPEED CUSHIONS	
6' X 10.5' SPEED CUSHION WITH ONE ARROW	9
SIGNING	
W17-1 (VAR.) "SPEED CUSHION" SIGN (30" X 30")	6
W17-1 (VAR.) "SPEED CUSHIONS AHEAD" SIGN (30" X 30")	1
W13-1P "20 M.P.H" SIGN (18" X 18")	7
RADAR FEEDBACK SIGN	2
PAVEMENT MARKINGS AND DELINEATORS	
4" WHITE FLEXIBLE DELINEATOR	7

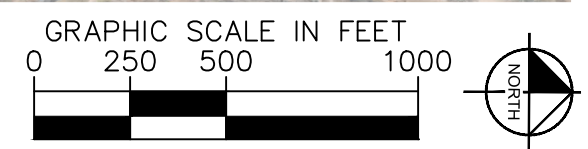
**NOTE:** ALL LOCATIONS ARE REFERENCED FROM CENTERLINE OF DRIVEWAYS OR OTHER LANDMARKS TO THE CENTER OF SPEED CUSHIONS OR SIGNS.

### LEGEND

-  LIMITS OF TRAFFIC CALMING PROJECT
-  SPEED CUSHIONS
-  RADAR FEEDBACK SIGN

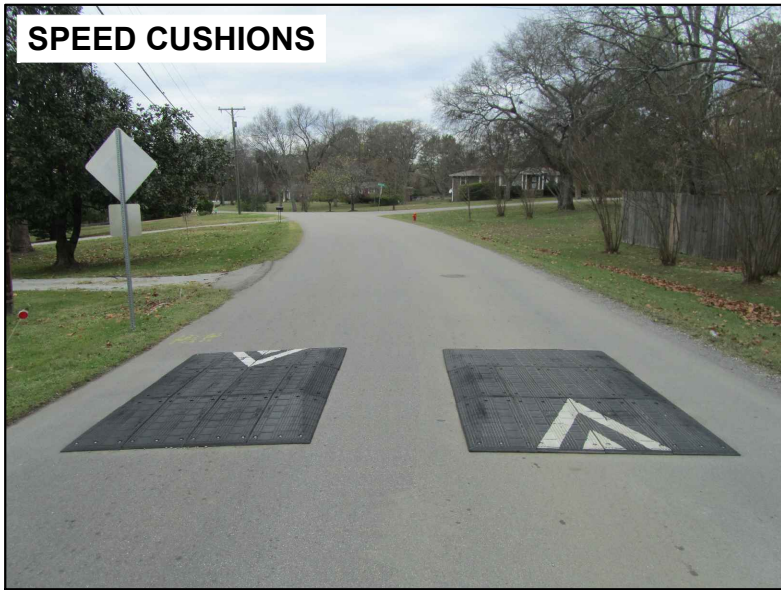


DESIGNED BY:	DJG
DRAWN BY:	RJS
CHECKED BY:	NDOT
DATE:	2/28/2025
KIMLEY-HORN PROJECT NO.:	118800251

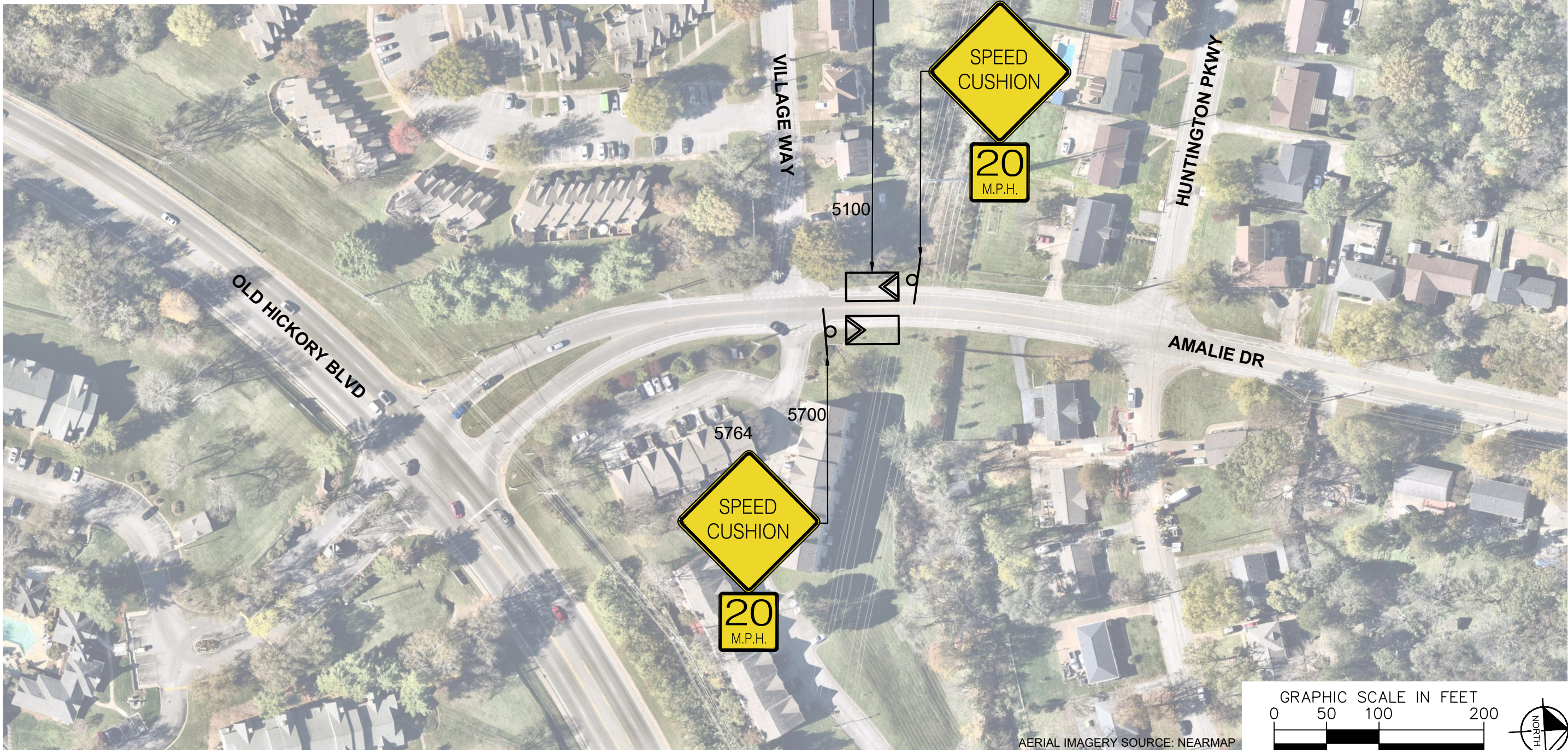


AERIAL IMAGERY SOURCE: NEARMAP

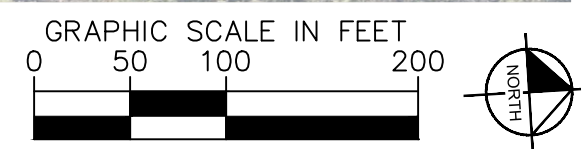
**SPEED CUSHIONS**



**RADAR FEEDBACK SIGN**



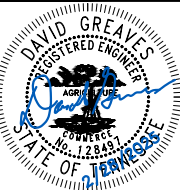
**SPEED CUSHION CONFIGURATION A**  
75' NORTH OF VILLAGE WAY



AERIAL IMAGERY SOURCE: NEARMAP



**AMALIE DRIVE**  
**TRAFFIC CALMING**  
NASHVILLE, TN



**Kimley»Horn**

DESIGNED BY:	DJG
DRAWN BY:	RJS
CHECKED BY:	NDOT
DATE:	2/28/2025
KIMLEY-HORN PROJECT NO.:	118900051

**CONCEPT**

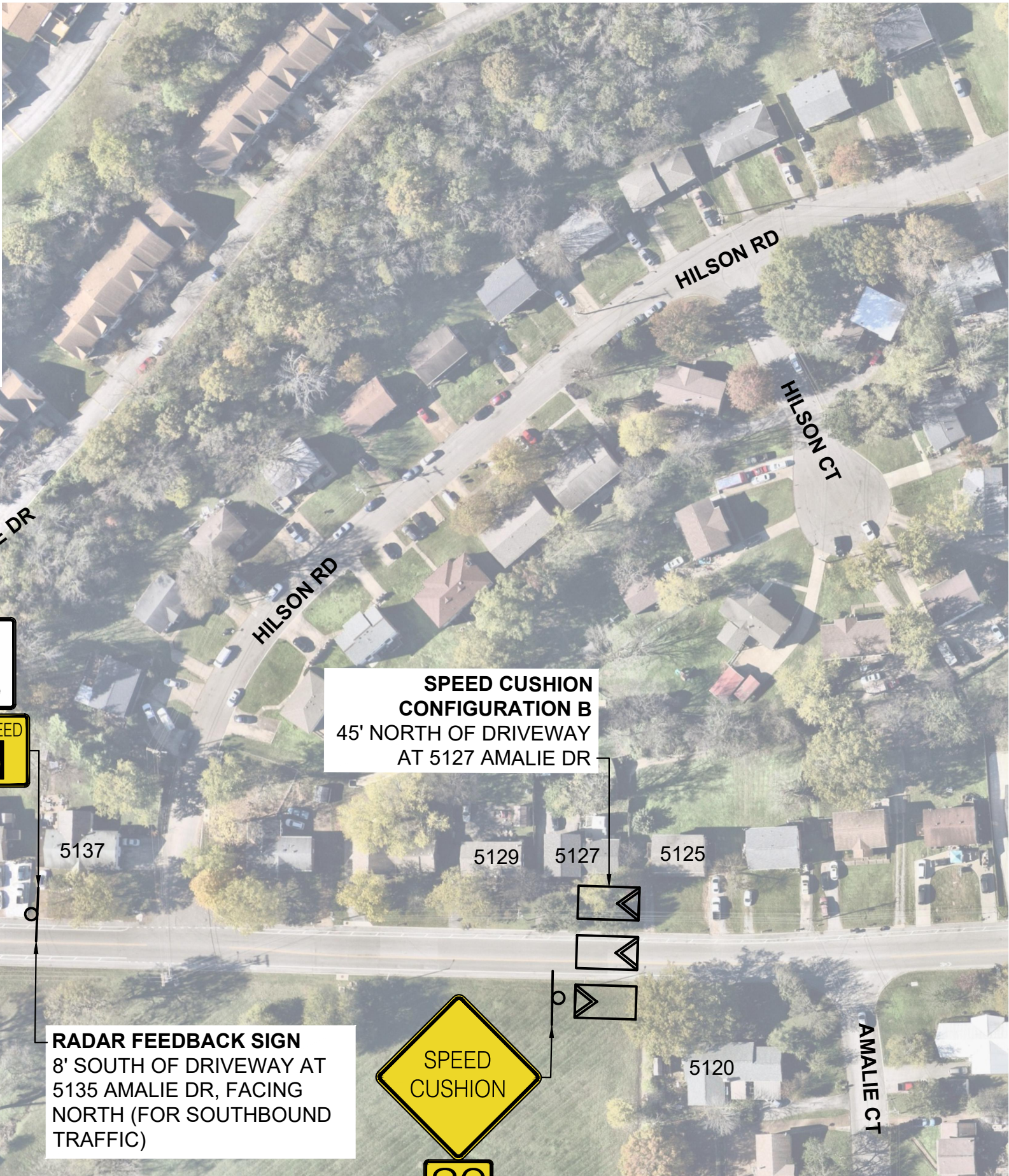
SHEET NUMBER  
**02**

This document, together with the concepts and designs presented herein, is intended only for the specific purpose and client for which it was prepared. Reuse of and improper reliance on this document without written authorization and adaptation by Kimley-Horn and Associates, Inc. shall be without liability to Kimley-Horn and Associates, Inc.

**SPEED CUSHIONS**



**RADAR FEEDBACK SIGN**



SPEED LIMIT  
**25**

YOUR SPEED  
**25**

SPEED LIMIT  
**25**

YOUR SPEED  
**25**

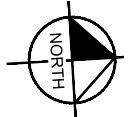
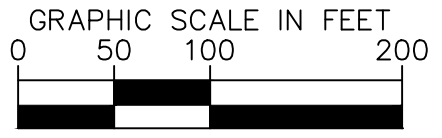
**SPEED CUSHION CONFIGURATION B**  
45' NORTH OF DRIVEWAY AT 5127 AMALIE DR

**RADAR FEEDBACK SIGN**  
8' SOUTH OF DRIVEWAY AT 5135 AMALIE DR, FACING NORTH (FOR SOUTHBOUND TRAFFIC)

**RADAR FEEDBACK SIGN**  
10' SOUTH OF DRIVEWAY AT 5654 AMALIE DR, FACING SOUTH (FOR NORTHBOUND TRAFFIC)

SPEED CUSHION

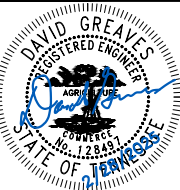
**20**  
M.P.H.



AERIAL IMAGERY SOURCE: NEARMAP



AMALIE DRIVE  
TRAFFIC CALMING  
NASHVILLE, TN



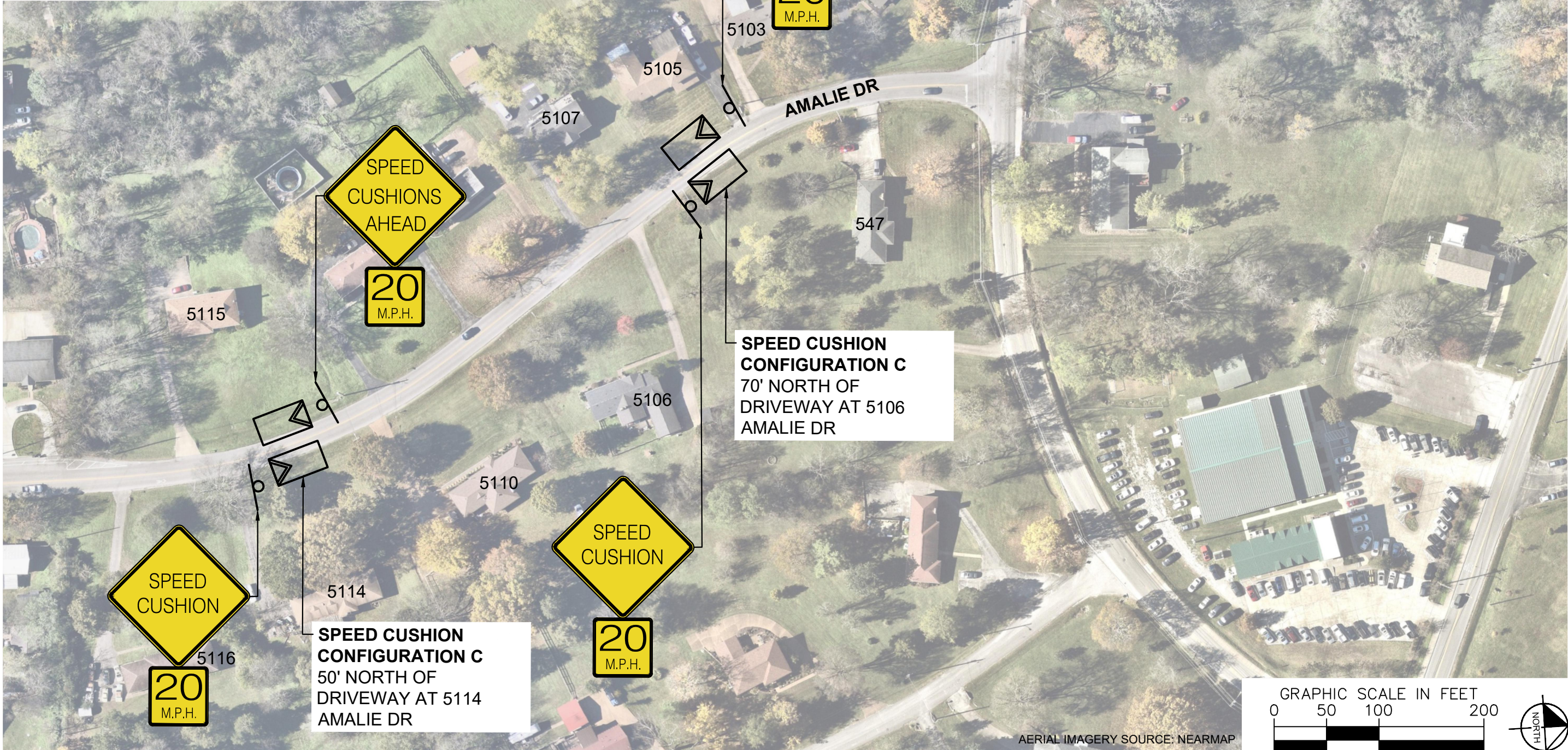
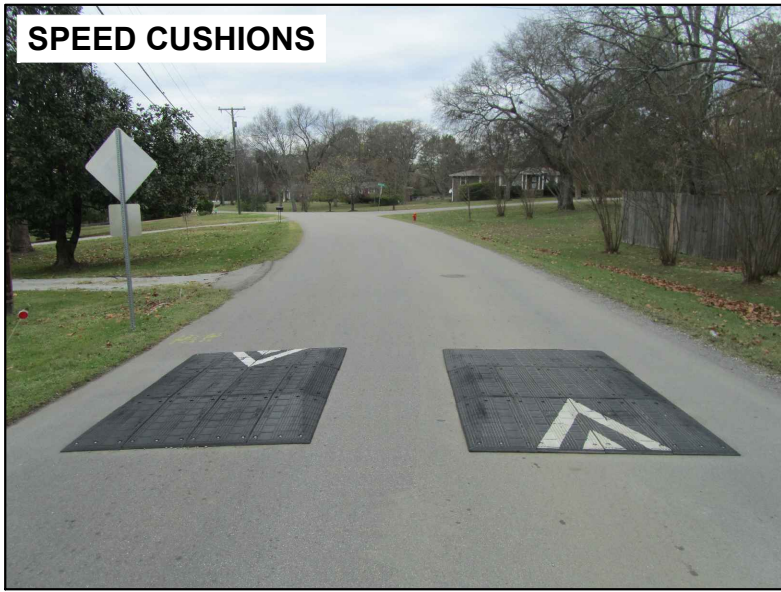
DESIGNED BY:	DJG
DRAWN BY:	RJS
CHECKED BY:	NDOT
DATE:	2/28/2025
KIMLEY-HORN PROJECT NO. 118800051	

**CONCEPT**

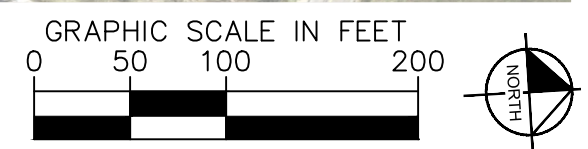
SHEET NUMBER  
**03**

This document, together with the concepts and designs presented herein, is intended only for the specific purpose and client for which it was prepared. Reuse of and improper reliance on this document without written authorization and adaptation by Kimley-Horn and Associates, Inc. shall be without liability to Kimley-Horn and Associates, Inc.

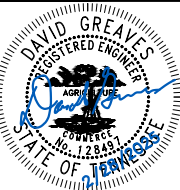
**SPEED CUSHIONS**



AERIAL IMAGERY SOURCE: NEARMAP



**AMALIE DRIVE  
TRAFFIC CALMING**  
NASHVILLE, TN



DESIGNED BY:	DJG
DRAWN BY:	RJS
CHECKED BY:	NDOT
DATE:	2/28/2025
KIMLEY-HORN PROJECT NO. 118800251	

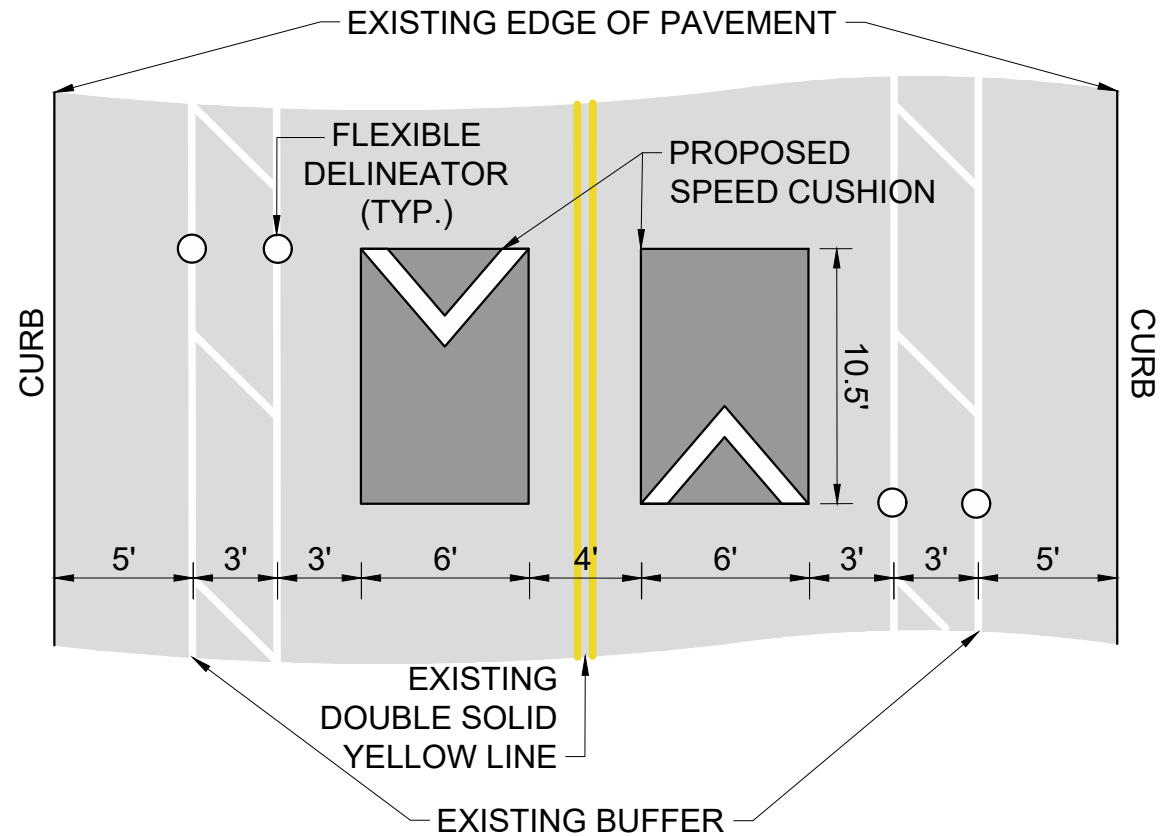
**CONCEPT**

SHEET NUMBER  
**04**

This document, together with the concepts and designs presented herein, is intended only for the specific purpose and client for which it was prepared. Reuse of and improper reliance on this document without written authorization and adaptation by Kimley-Horn and Associates, Inc. shall be without liability to Kimley-Horn and Associates, Inc.

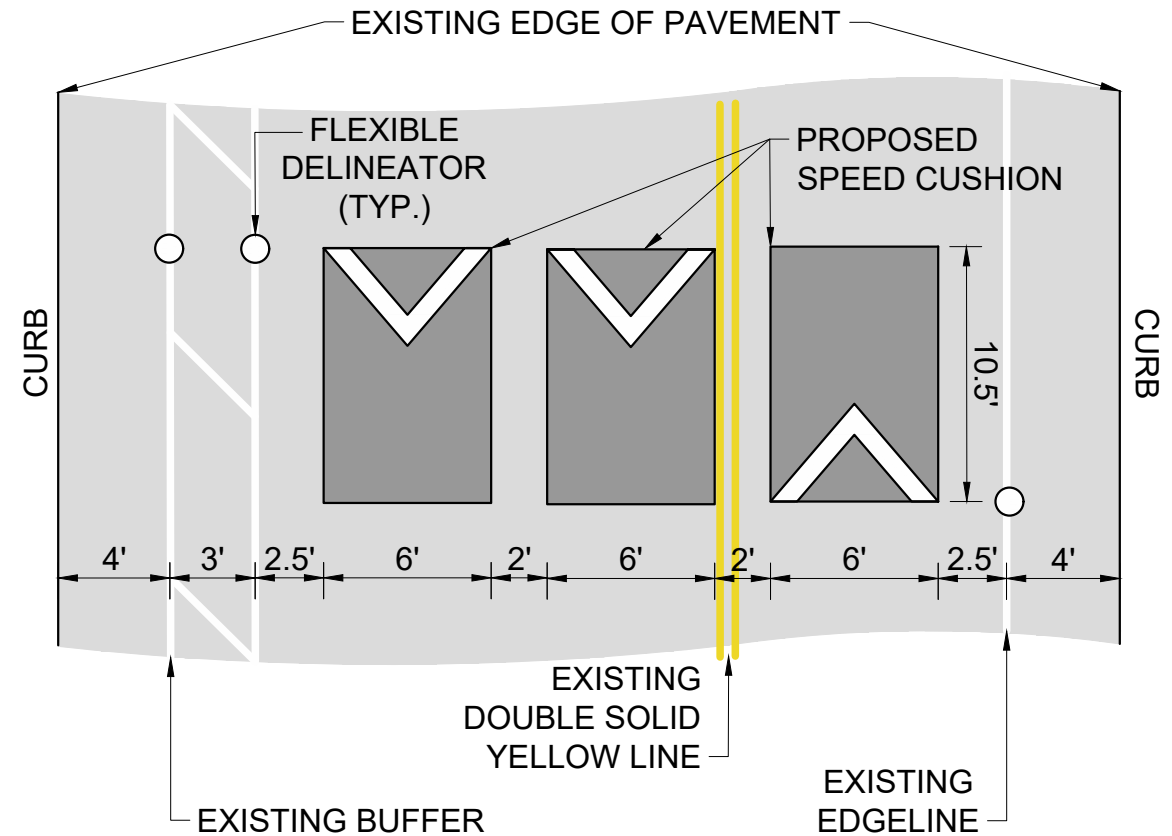
### CONFIGURATION A

PAVEMENT WIDTH: 38'



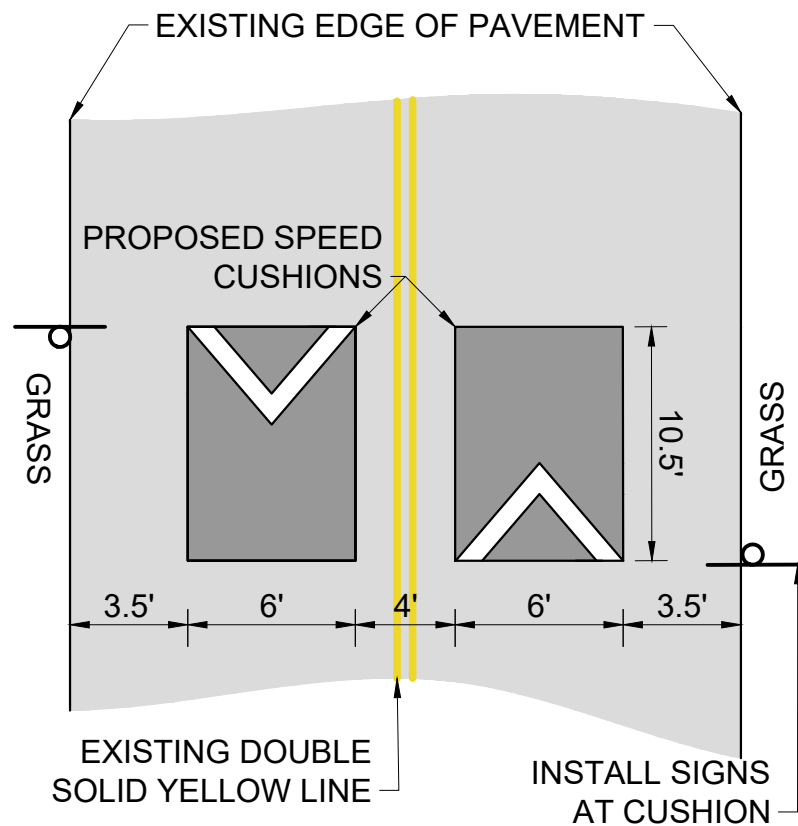
### CONFIGURATION B

PAVEMENT WIDTH: 38'

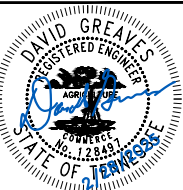


### CONFIGURATION C

PAVEMENT WIDTH: 23'



AMALIE DRIVE  
TRAFFIC CALMING  
NASHVILLE, TN



DESIGNED BY:	DJG
DRAWN BY:	RJS
CHECKED BY:	NDOT
DATE:	2/28/2025
KIMLEY-HORN PROJECT NO. 118800051	

**DETAIL**

SHEET NUMBER  
**05**

This document, together with the concepts and designs presented herein, is intended only for the specific purpose and client for which it was prepared. Reuse of and improper reliance on this document without written authorization and adaptation by Kimley-Horn and Associates, Inc. shall be without liability to Kimley-Horn and Associates, Inc.