

### ESTIMATED QUANTITIES

#### SPEED CUSHIONS

6' X 7' SPEED CUSHION WITH ONE ARROW	6
--------------------------------------	---

#### SIGNING

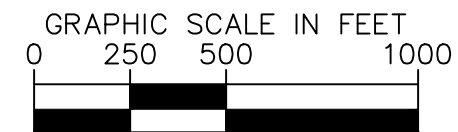
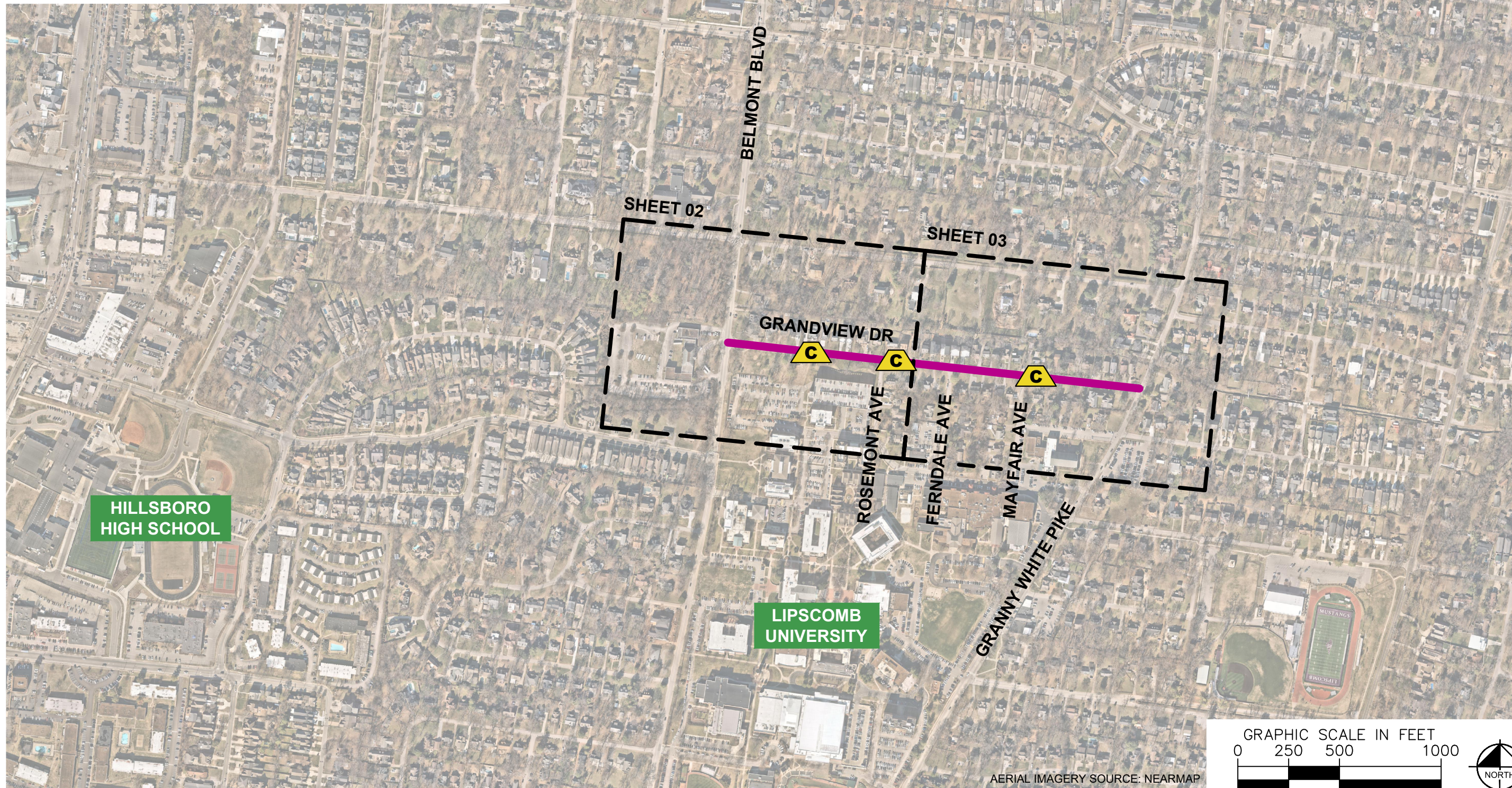
W17-1 (VAR.) "SPEED CUSHION" SIGN (30" X 30")	6
---	---

W13-1P "20 M.P.H" SIGN (18" X 18")	6
------------------------------------	---

**NOTE:** ALL LOCATIONS ARE REFERENCED FROM CENTERLINE OF DRIVEWAYS OR OTHER LANDMARKS TO THE CENTER OF SPEED CUSHIONS OR SIGNS.

### LEGEND

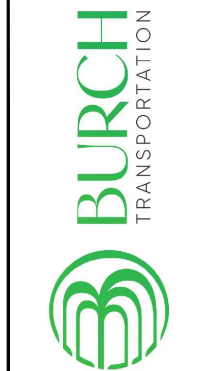
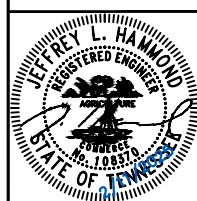
-  LIMITS OF TRAFFIC CALMING PROJECT
-  SPEED CUSHIONS



AERIAL IMAGERY SOURCE: NEARMAP



GRANDVIEW DRIVE  
TRAFFIC CALMING  
NASHVILLE, TN

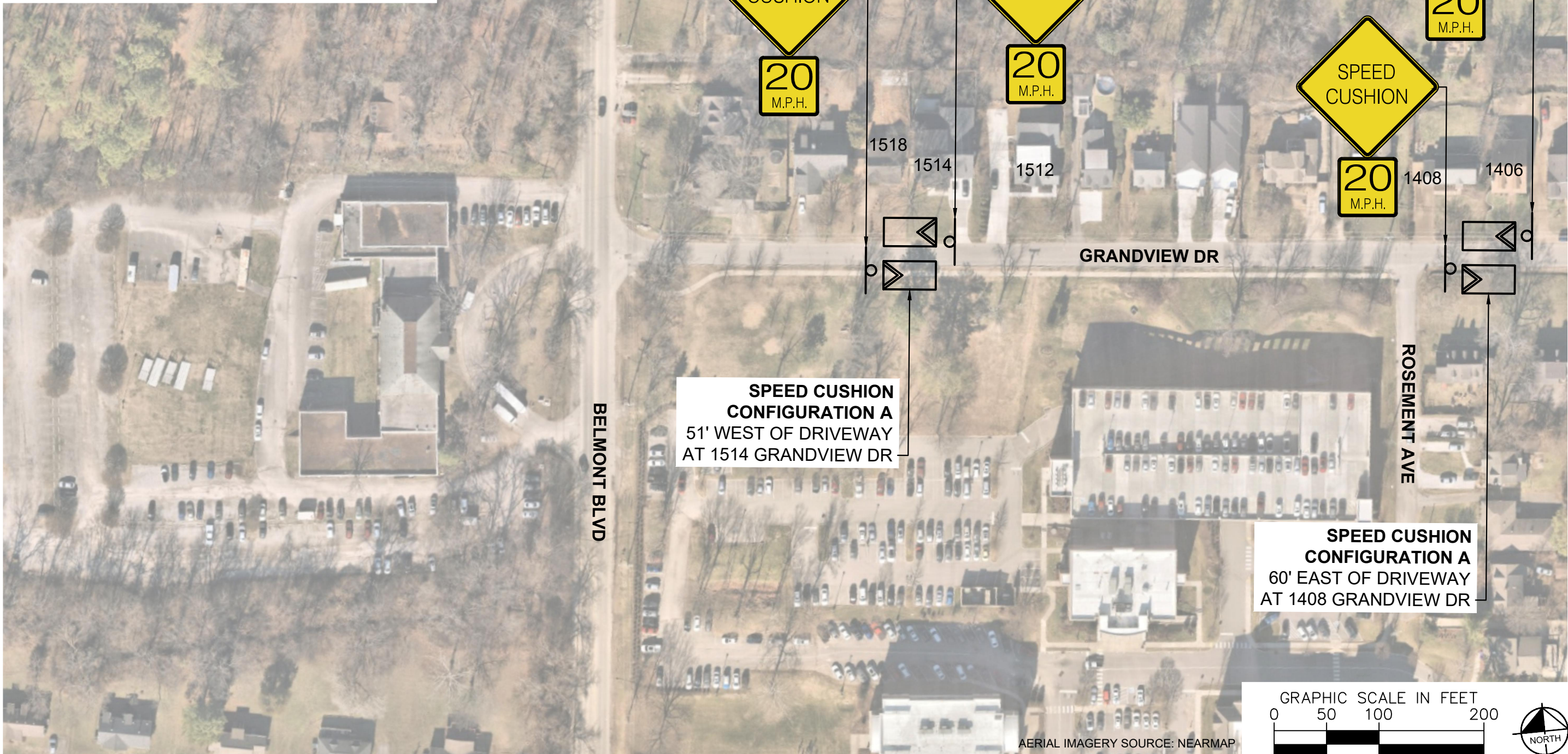
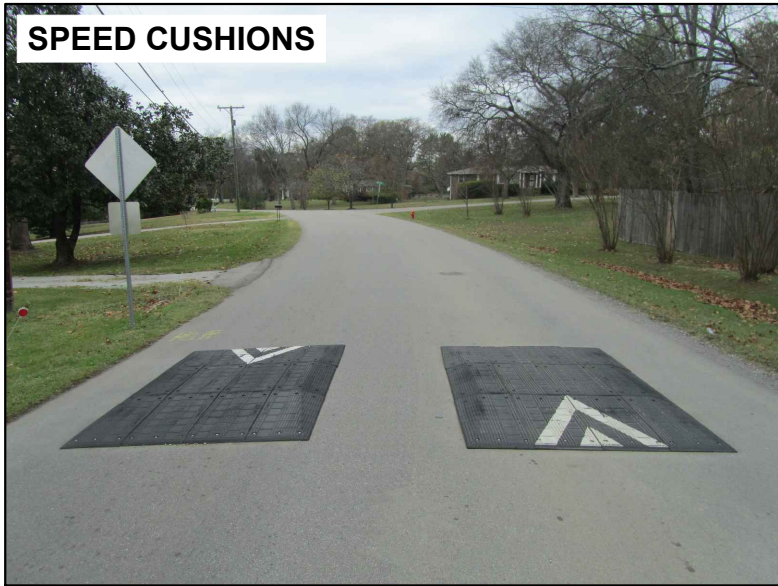


DESIGNED BY: J.H.  
DRAWN BY: ECK  
CHECKED BY: NDOT  
DATE: 2/11/2025  
KIMLEY-HORN PROJECT NO. 118800051

**KEY**  
SHEET NUMBER  
**01**

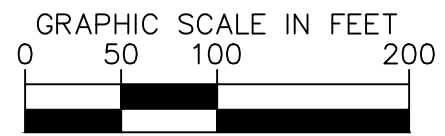
This document, together with the concepts and designs presented herein, is intended only for the specific purpose and client for which it was prepared. Reuse of and improper reliance on this document without written authorization and adaptation by Kimley-Horn and Associates, Inc. shall be without liability to Kimley-Horn and Associates, Inc.

**SPEED CUSHIONS**



**SPEED CUSHION CONFIGURATION A**  
51' WEST OF DRIVEWAY  
AT 1514 GRANDVIEW DR

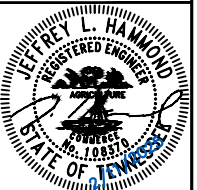
**SPEED CUSHION CONFIGURATION A**  
60' EAST OF DRIVEWAY  
AT 1408 GRANDVIEW DR



AERIAL IMAGERY SOURCE: NEARMAP



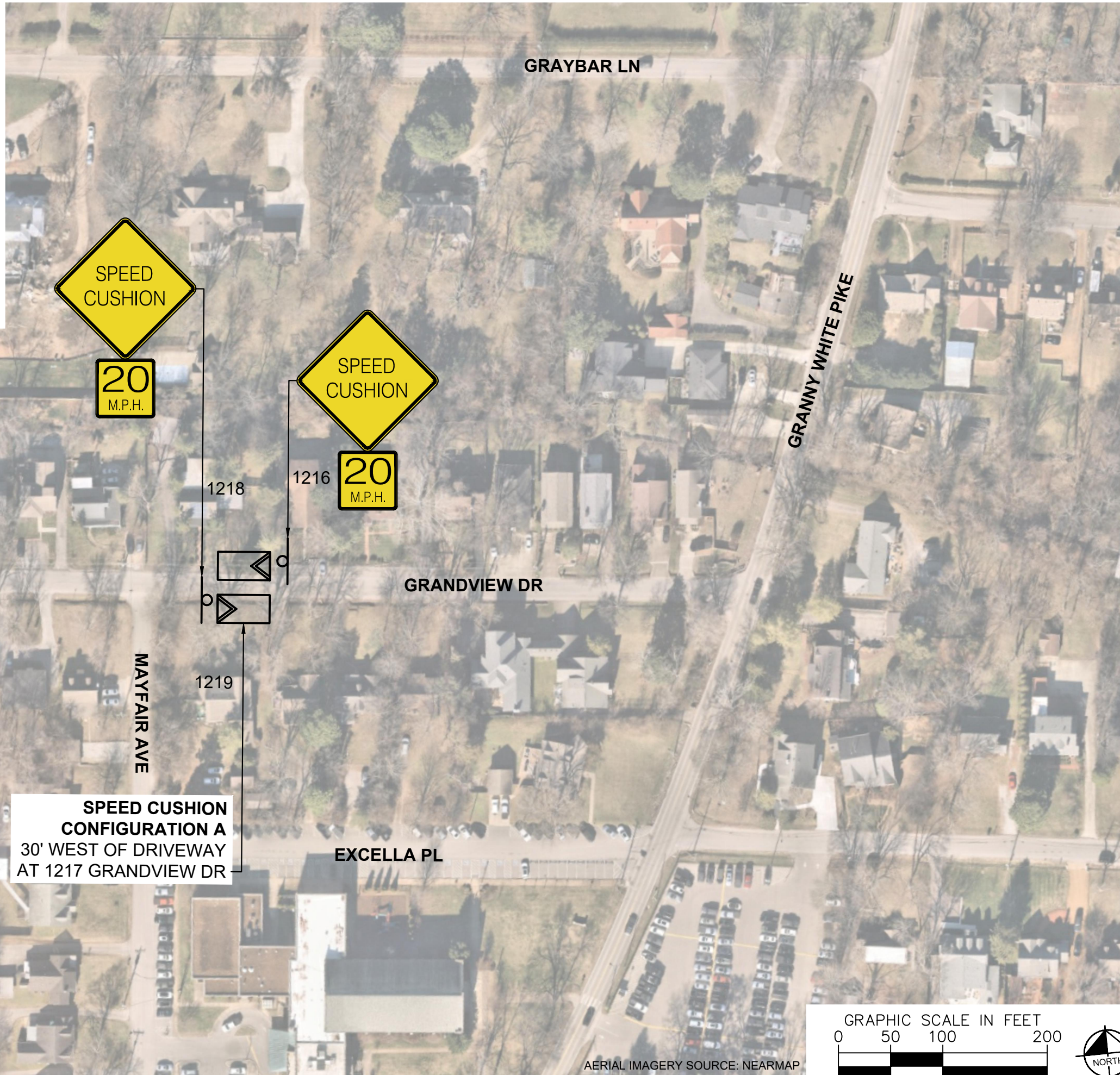
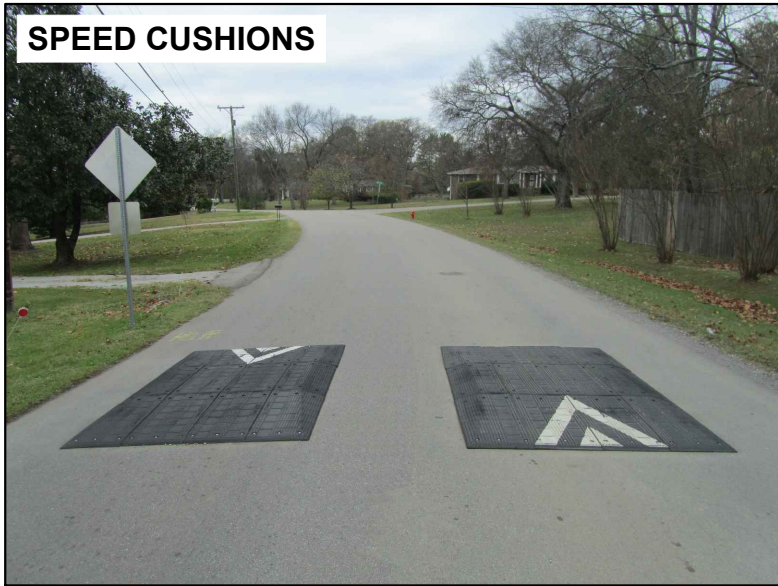
**GRANDVIEW DRIVE  
TRAFFIC CALMING**  
NASHVILLE, TN



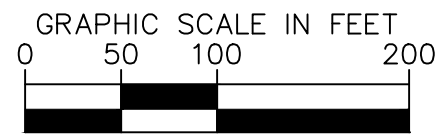
DESIGNED BY:	JLH
DRAWN BY:	ECK
CHECKED BY:	NDOT
DATE:	2/11/2025
KIMLEY-HORN PROJECT NO.:	118800251

**CONCEPT**  
SHEET NUMBER  
**02**

**SPEED CUSHIONS**



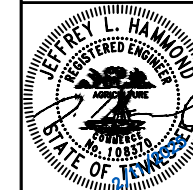
**SPEED CUSHION  
CONFIGURATION A**  
30' WEST OF DRIVEWAY  
AT 1217 GRANDVIEW DR



AERIAL IMAGERY SOURCE: NEARMAP



**GRANDVIEW DRIVE  
TRAFFIC CALMING**  
NASHVILLE, TN



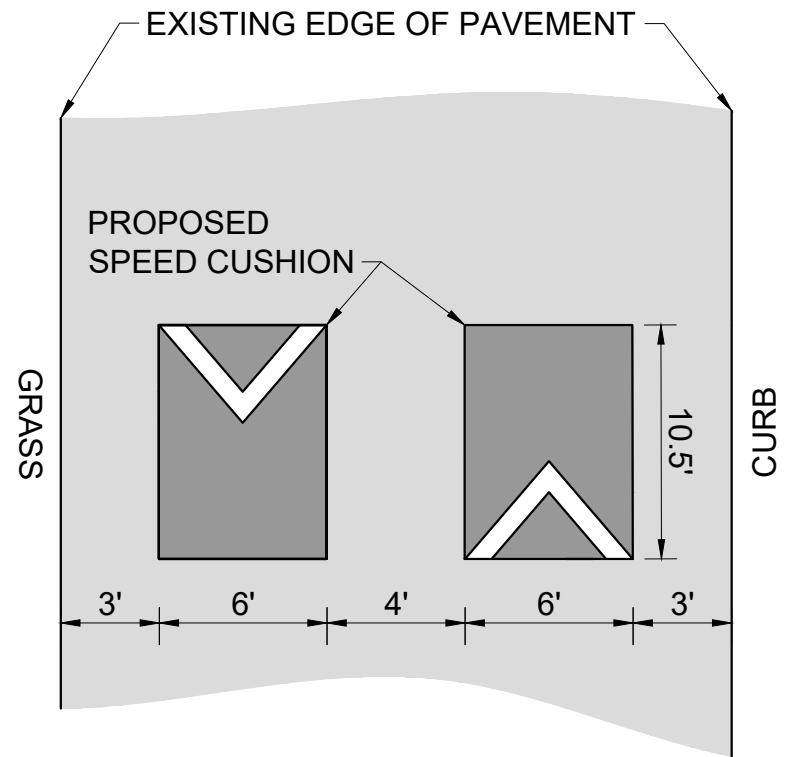
DESIGNED BY:	JLH
DRAWN BY:	ECK
CHECKED BY:	NDOT
DATE:	2/11/2025
KIMLEY-HORN PROJECT NO. 118800051	

**CONCEPT**  
SHEET NUMBER  
**03**

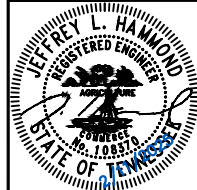
This document, together with the concepts and designs presented herein, is intended only for the specific purpose and client for which it was prepared. Reuse of and improper reliance on this document without written authorization and adaptation by Kimley-Horn and Associates, Inc. shall be without liability to Kimley-Horn and Associates, Inc.

# CONFIGURATION A

PAVEMENT WIDTH: 22'



GRANDVIEW DRIVE  
TRAFFIC CALMING  
NASHVILLE, TN



DESIGNED BY: J.L.H.  
DRAWN BY: ECK  
CHECKED BY: NDOT  
DATE: 2/11/2025  
KIMLEY-HORN PROJECT NO. 118800051

**DETAIL**

SHEET NUMBER  
**04**

This document, together with the concepts and designs presented herein, as an instrument of service, is intended only for the specific purpose and client for which it was prepared. Reuse of and improper reliance on this document without written authorization and adaptation by Kimley-Horn and Associates, Inc. shall be without liability to Kimley-Horn and Associates, Inc.