

ESTIMATED QUANTITIES

SPEED CUSHIONS

6' X 10.5' SPEED CUSHION WITH ONE ARROW	4
---	---

SIGNING

W17-1 (VAR.) "SPEED CUSHIONS AHEAD" SIGN (30" X 30")	2
--	---

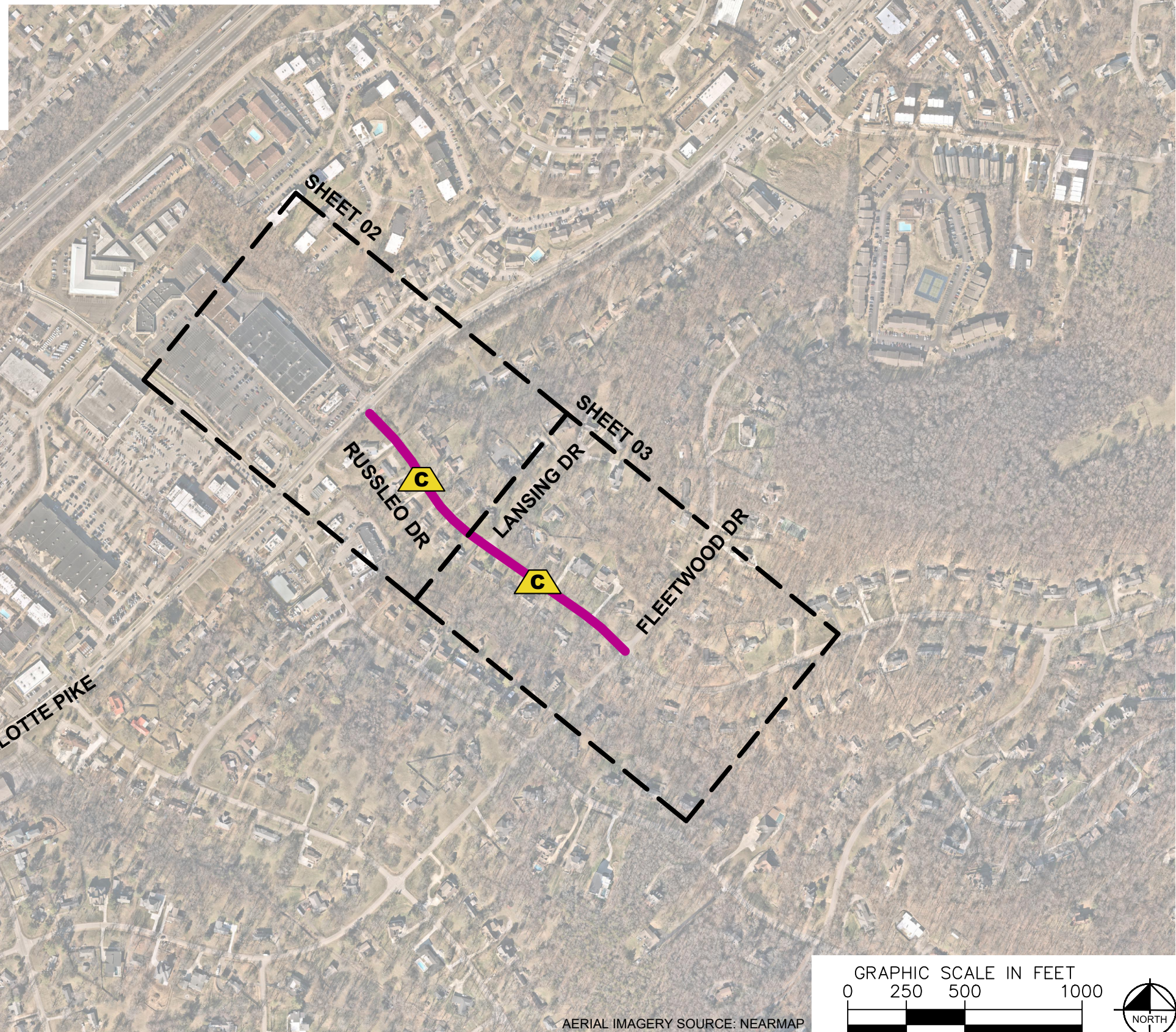
W13-1P "20 M.P.H" SIGN (18" X 18")	2
------------------------------------	---

NOTE: ALL LOCATIONS ARE REFERENCED FROM CENTERLINE OF DRIVEWAYS OR OTHER LANDMARKS TO THE CENTER OF SPEED CUSHIONS OR SIGNS.

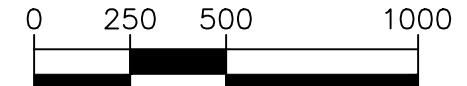
LEGEND

 LIMITS OF TRAFFIC CALMING PROJECT

 SPEED CUSHIONS



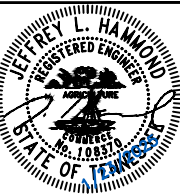
GRAPHIC SCALE IN FEET



AERIAL IMAGERY SOURCE: NEARMAP

NDOT

RUSLEO DRIVE
TRAFFIC CALMING
NASHVILLE, TN



DESIGNED BY:	JLH
DRAWN BY:	RJS
CHECKED BY:	NDOT
DATE:	1/23/2025
KIMLEY-HORN PROJECT NO. 118800051	

KEY

SHEET NUMBER
01

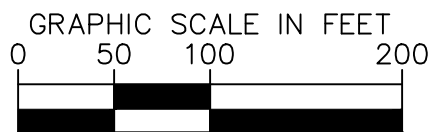
SPEED CUSHIONS



SPEED CUSHION CONFIGURATION A
46' SOUTH OF DRIVEWAY
AT 851 RUSLEO DR.

SPEED
CUSHIONS
AHEAD

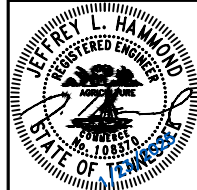
20
M.P.H.



AERIAL IMAGERY SOURCE: NEARMAP



RUSLEO DRIVE
TRAFFIC CALMING
NASHVILLE, TN



DESIGNED BY:	JLH
DRAWN BY:	RJS
CHECKED BY:	NDOT
DATE:	1/23/2025
KIMLEY-HORN PROJECT NO.	118800051

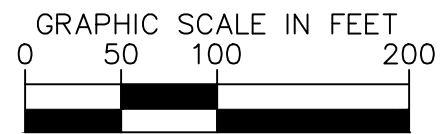
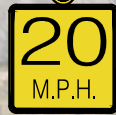
CONCEPT
SHEET NUMBER
02

This document, together with the concepts and designs presented herein, is intended only for the specific purpose and client for which it was prepared. Reuse of and improper reliance on this document without written authorization and adaptation by Kimley-Horn and Associates, Inc. shall be without liability to Kimley-Horn and Associates, Inc.

SPEED CUSHIONS



SPEED CUSHION CONFIGURATION A
37' NORTH OF DRIVEWAY AT 833 RUSSELO DR.



AERIAL IMAGERY SOURCE: NEARMAP



RUSSELO DRIVE
TRAFFIC CALMING
NASHVILLE, TN

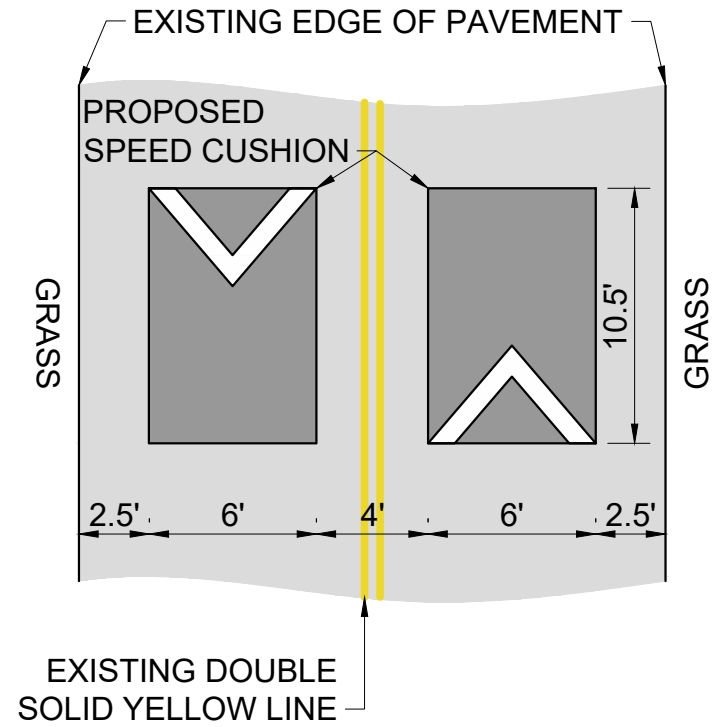


DESIGNED BY:	JLH
DRAWN BY:	RJS
CHECKED BY:	NDOT
DATE:	1/23/2025
KIMLEY-HORN PROJECT NO.:	118900051

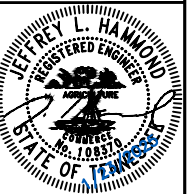
CONCEPT
SHEET NUMBER
03

CONFIGURATION A

PAVEMENT WIDTH: 21'



RUSLEO DRIVE
TRAFFIC CALMING
NASHVILLE, TN



DESIGNED BY: J.L.H.
DRAWN BY: R.J.S.
CHECKED BY: NDOT
DATE: 1/23/2025
KIMLEY-HORN PROJECT NO. 118800051

DETAIL

SHEET NUMBER
03

This document, together with the concepts and designs presented herein, as an instrument of service, is intended only for the specific purpose and client for which it was prepared. Reuse of and improper reliance on this document without written authorization and adaptation by Kimley-Horn and Associates, Inc. shall be without liability to Kimley-Horn and Associates, Inc.